



Fitzgerald

www.fitzgerald-fii.com

Matched Antibody Pairs & Related Products

February 2017

E-mail orders and inquiries to antibodies@fitzgerald-fii.com

Website www.fitzgerald-fii.com

Toll Free (USA) 800.370.2222

Tel 978.371.6446

Fax 978.371.2266

Fitzgerald Industries International

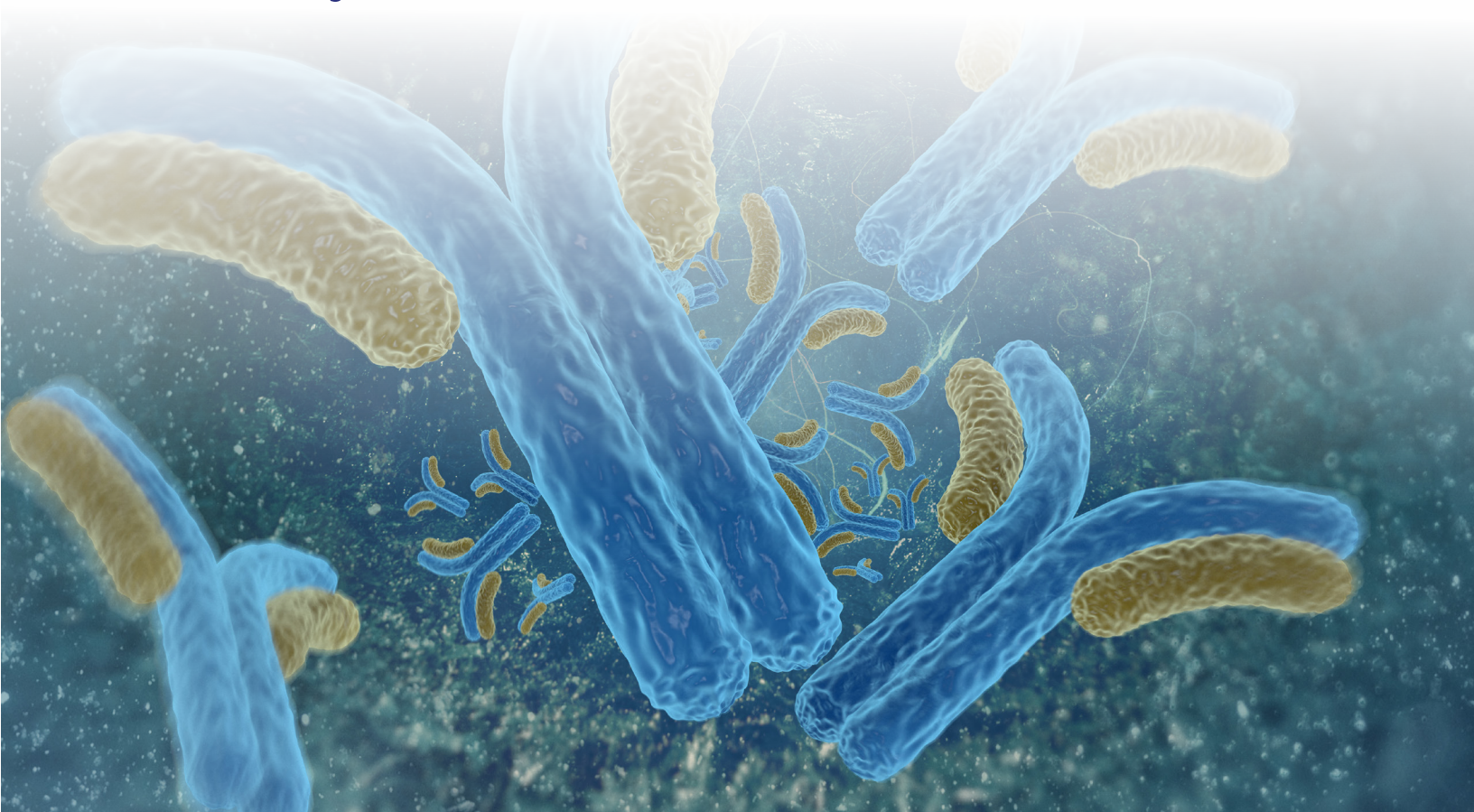
30 Sudbury Road

Suite 1 A N Acton

MA 01720

USA

www.fitzgerald-fii.com



Fitzgerald Industries International is your premier provider of 70,000 highly purified Monoclonal and Polyclonal Antibodies, purified Proteins, ELISA Kits and Specialty Research Products. Since 1989 customers have depended on Fitzgerald Industries to supply them with the very best products for research and further manufacture.

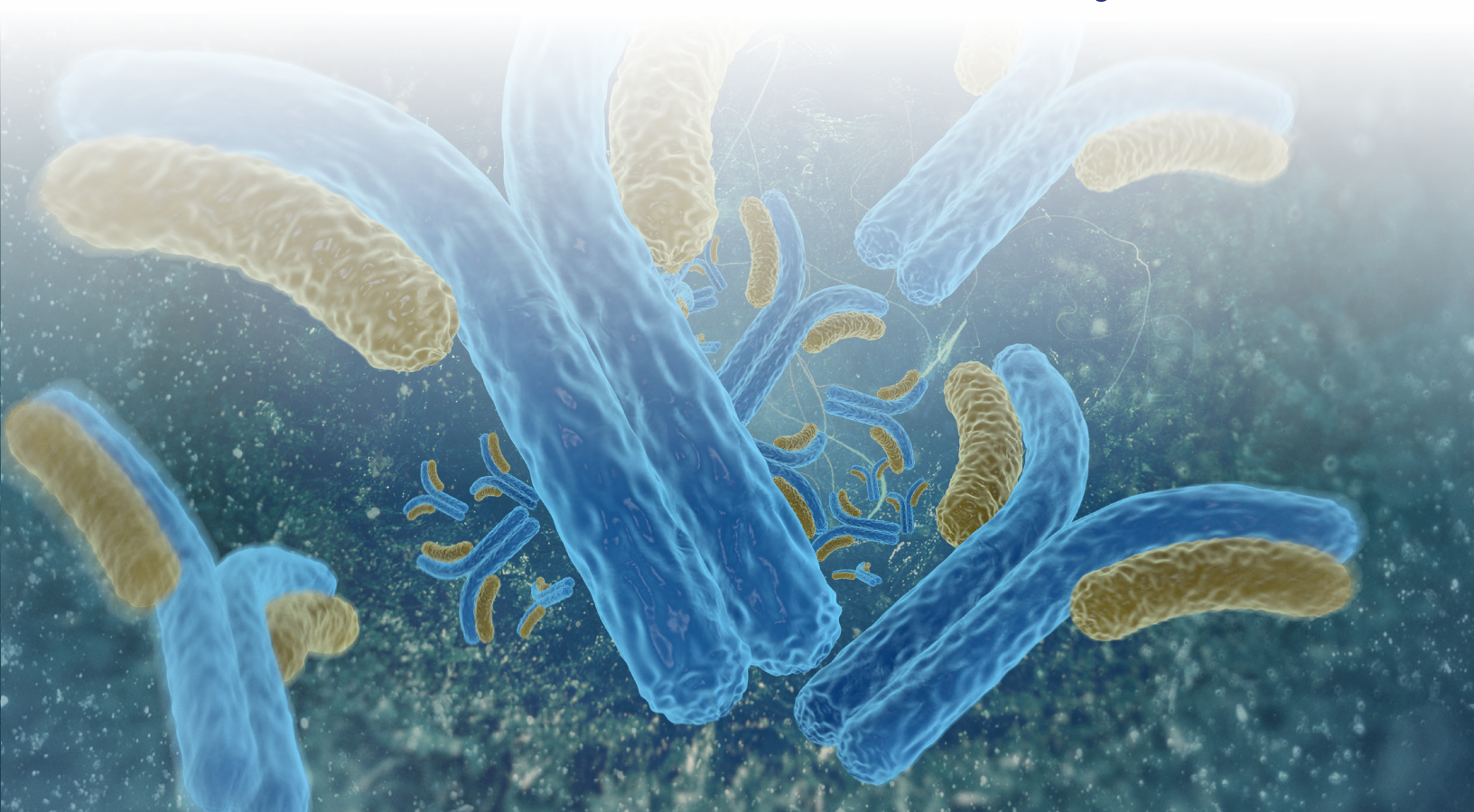
Our latest matched pair brochure lists over 1000 combinations of polyclonal and monoclonal antibodies, proteins, and haptens. These off-the-shelf matched pairs save you time and money in assay development and optimization of your own reagents, while giving sensitive and robust results. We currently offer a wide range of matched pairs in research areas including Infectious Disease, Cardiac Markers, Cancer, Immunology, Hormones & Steroids, and Drugs & Toxicology.

Why not inquire about associated antigens for immunization, calibrators, and controls? In addition to our huge range of matched pairs, we supply thousands of antibodies, proteins, immunoglobulins, serum and blood cells, ELISA kits, and speciality reagents in numerous research areas including Cell Biology, Signal Transduction, Neuroscience, Cytokines & Growth Factors, Protein Modification, Cell Death & Stress, and many more.

If you are looking for matched pairs that are not listed in the brochure or any related components for assay development please contact our technical support department to assist you with your specific requirements.

Visit our website at www.fitzgerald-fii.com to search our complete product range and view full technical datasheets.

www.fitzgerald-fii.com



Capture Antibody/Antigen	Clone #	Catalog #	Detection Antibody	Clone #	Catalog #	Comments, Assay Type
Aprotinin mAb	M81495	10-1773	Aprotinin mAb	M81439-B	61-1013	Antibody pair to detect bovine Aprotinin in solid phase or free in (biotin) solution
Aprotinin mAb	M81463	10-1772	Aprotinin mAb	M81439-B	61-1013	Excellent antibody pair for detection of bovine Aprotinin in (biotin) sandwich immunoassays
BChE mAb	M81505	10-1810	BChE mAb (biotin)	M81505-B	61-1029	Excellent antibody pair specific for BChE in serum & plasma
C3a desArg mAb (desArg)	M81625	10-1804	C3a desArg mAb (biotin)	M81611-B	61-1027	Excellent antibody pair specific for human C3, C3a and C3a
Complement D mAb	M81610	10-1803	Complement D mAb (biotin)	M81623-B	61-1026	Excellent antibody pair to detect Complement D in sandwich immunoassays
Complement H mAb	M81609	10-1806	Complement H mAb (biotin)	M81626-B	61-1028	Excellent antibody pair to detect Complement H in sandwich immunoassays
C Peptide mAb	M72094	10-2311	C Peptide mAb	M72095	10-2312	Suitable for ELISA & Luminex Assays. Pair does not detect Proinsulin
C Peptide mAb	M8120921	10-C65B	C Peptide mAb	M8120922	10-C65C	Suitable for C Peptide & Proinsulin detection in ELISA
C Peptide mAb	M607239	10-C65A				Immunogen is C Peptide of proinsulin
C Peptide pAb		20-CP10T				Specific for human C Peptide
C Peptide mAb	M81657	10-2246	C Peptide mAb	M81659	10-2248	Suitable antibody pair to detect C peptide in ELISA
C Peptide mAb	M81658	10-2247	C Peptide mAb	M81659	10-2248	Suitable antibody pair to detect C peptide in ELISA
Fetal Hemoglobin mAb	M72076	10-2293	Fetal Hemoglobin mAb	M72077	10-2294	Excellent pair for ELISA
Ghrelin mAb	M81517	10-1791	Ghrelin mAb (biotin)	M81407-B	61-1021	Excellent antibody pair specific for human Ghrelin and des-acyl Ghrelin
GLP1 mAb	M81589	10-1873	GLP1 mAb (biotin)	M81385-B	61-1012	Antibody pair specific for the amidated C-terminus of the peptide "Active GLP1"
GLP1 mAb	M81520	10-1784	GLP1 mAb (biotin)	M81589-B	61-1035	Pair for ELISA. Suitable for Western blotting
GLP1 mAb	M81589	10-1873	GLP1 mAb (biotin)	M81402-B	61-1036	Antibody pair specific for the amidated C-terminus of the peptide "Active GLP1"
GLP1 mAb	M81589	10-1873	GLP1 mAb (biotin)	M81526-B	61-1037	Antibody pair specific for the amidated C-terminus of the peptide "Active GLP1"
GLP1 mAb	M81533	10-1785	GLP1 mAb (biotin)	M81589-B	61-1035	Specific for detection of GLP1(1-37), GLP1(7-37) and GLP1(9-37) in sandwich immunoassays
GLP1 mAb	M81526	10-1875	GLP1 mAb (biotin)	M81373-B	61-1018	Excellent antibody pair to detect GLP1 in sandwich immunoassays
GLP1 mAb	M81513	10-1767	Exendin 4 mAb (biotin)	M81494-B	61-1006	Excellent antibody pair for GLP1/Exendin 4 binding immunoassays
GLP1 mAb	M81385	10-1768	Exendin 4 mAb (biotin)	M81494-B	61-1006	Excellent antibody pair for GLP1/Exendin 4 binding assays
GLP1 mAb	M81373	10-1786	GLP1 mAb (biotin)	M81385-B	61-1012	Antibody pair to detect non-amidated (-Arg-Gly) C-terminal GLP1 in sandwich immunoassays
Glucagon pAb	20-GR20					15,000 test/ml by 125I RIA; ED50 = 650 pg/ml @ 41% B/TC
Glucagon mAb	M81378	10-1795	Glucagon mAb (biotin)	M81376-B	61-1022	Excellent antibody pair to detect Glucagon in sandwich immunoassays
Hemoglobin mAb	M1709Hg2	10-1397	Hemoglobin mAb	M1709Hg1	10-1396	Suitable for use in ELISA & Lateral Flow
Hemoglobin mAb	M1202099	10-3144	Hemoglobin mAb	M1202100	10-3145	Suitable pairing for Lateral Flow. Can also be used in ELISA
Hemoglobin mAb	M77284	10-1723	Hemoglobin A1c mAb	M77285	10-1724	Suitable for Matched Pair immunoassay
Hemoglobin mAb	M77286	10-1725	Hemoglobin mAb	M77287	10-1726	For use in ELISA and other sandwich immunoassays
Hemoglobin mAb	M77286	10-1725	Hemoglobin mAb	M12161	10-1161	For use in ELISA and other sandwich immunoassays
Hemoglobin mAb	M4020514	10-H03C	Hemoglobin mAb	M4020515	10-H03D	For use in sandwich immunoassays

■ Matched Pairs

* Can be used as capture and detection antibody

Capture Antibody/Antigen	Clone #	Catalog #	Detection Antibody	Clone #	Catalog #	Comments, Assay Type
Hemoglobin mAb	M4020516	10-H03E	Hemoglobin mAb	M13036	10-H03I	Use in sandwich immunoassays to detect total hemoglobin
Hemoglobin A1c mAb	M8121531	10-H03H	Hemoglobin A1c mAb	M8121532	10-H12C	Recommended for ELISA
Hemoglobin A1c mAb	M8121531	10-H03H	Hemoglobin A1c mAb	M61691	10-1527	Recommended for ELISA; Interchangeable pair
Hemoglobin A1c mAb	M8121531	10-H03H	Hemoglobin A1c mAb	M61692	10-1528	Recommended for ELISA; Interchangeable pair
Hemoglobin A1c mAb	M0501129	10-H12B				Reacts with all variants of A1c and S1c, recommended for ELISA
Hemoglobin A1c protein		30R-AH012X				>96 % by FPLC
Hemoglobin A1c protein		30-AH31				>98% by HPLC
Hemoglobin A α protein		30-AH32				>98% by HPLC
Hemoglobin Epsilon Chain mAb	0900-50	10C-CR8008M1				Hemoglobin Gower-I (a2e2) isolated from K562 cell culture
Hemoglobin Gamma Chain mAb	700-50	10C-CR8115M1				Specific for gamma chain of Hb F and Hb Barts, suitable for ELISA
Hemopexin mAb	M81510	10-1750	Hemopexin mAb (biotin)	M81489-B	61-1008	Excellent antibody pair to detect Hemopexin in sandwich immunoassays
Hemopexin mAb	M81489	10-1751	Hemopexin mAb (biotin)	M81510-B	61-1007	Excellent antibody pair to detect Hemopexin in sandwich immunoassays
Insulin mAb	M83149	61-1054	Insulin mAb	M83105	10-2396	Use for native/recombinant ELISA & Lateral Flow
Insulin mAb	M83148	10-2397	Insulin mAb	M83105	10-2396	Use for native/recombinant ELISA & Lateral Flow
Insulin mAb	M322213	10-I30B	Insulin mAb	M322214	10-I30C	Recommended for ELISA & IHC on frozen sections
Insulin mAb	M705217	10-I30E	Insulin mAb	M705218	10-I30F	Suitable for two site immunoassay
Insulin pAb		20-IP35				Porcine Insulin 100%, also highly reactive to human Insulin
Insulin protein		30-AI51				>99% by HPLC
Insulin+Proinsulin mAb	M322215	10-I34A	Insulin+Proinsulin mAb	M322216	10-I34B	Recommended for two-site enzyme immunoassay
MBL mAb	M81498	10-1865	MBL mAb (biotin)	M81498-B	61-1034	Excellent antibody pair to detect MBL in sandwich immunoassays
NGAL mAb	M81534	10-1798	NGAL mAb (biotin)	M81552-B	61-1024	Matched antibody pair for detection of monkey NGAL in ELISA
NGAL mAb	M81548	10-1886	NGAL mAb (biotin)	M81556-B	61-1039	Matched antibody pair for detection of human NGAL in ELISA
NGAL mAb	M81493	10-1797	NGAL mAb (biotin)	M81422-B	61-1023	Specific antibody pair for human NGAL in sandwich immunoassays
NGAL mAb	M81436	10-1788	NGAL mAb (biotin)	M81421-B	61-1019	Antibody pair to detect Canine NGAL in sandwich immunoassays
NGAL mAb	M81437	10-1789	NGAL mAb (biotin)	M81475-B	61-1020	Antibody pair to detect Porcine NGAL in sandwich immunoassays
NGAL mAb	M81428	10-1780	NGAL mAb (biotin)	M81490-B	61-1016	Specific antibody pair for human NGAL in sandwich immunoassays
NGAL mAb	M81417	10-1775	NGAL mAb (biotin)	M81420-B	61-1014	Antibody pair for detection of NGAL in sandwich immunoassays
NGAL mAb	M64663	10-1575	NGAL mAb	M64664	10-1576	Capture/Detection to be optimized in ELISA
NGAL mAb	M64663	10-1575	NGAL mAb	M64665	10-1577	Capture/Detection to be optimized in ELISA
NGAL mAb	M64663	10-1575	NGAL mAb	M64666	10-1578	Capture/Detection to be optimized in ELISA
NGAL mAb	M81417	10-1775	NGAL mAb (biotin)	M81427-B	61-1015	Antibody pair for detection of NGAL in sandwich immunoassays
NGAL mAb	M81386	10-1782	NGAL mAb (biotin)	M81477-B	61-1017	Antibody pair to detect mouse NGAL in serum assays
Peptide YY mAb	M81515	10-1792	Peptide YY mAb	M81380-B (biotin)	61-1011	Excellent antibody pair to detect human Peptide YY (3-36) in sandwich immunoassays
Proinsulin mAb	M32237	10-P14B	Insulin mAb	M322213	10-I30B	Recommended for sandwich immunoassay
Proinsulin mAb	M32238	10-P14A				Suitable for IHC on frozen sections
Proinsulin mAb	M12619P1	10-I30G	Insulin mAb	M322213	10-I30B	For use in sandwich immunoassay
Plasminogen mAb	M53470	10-7945	Plasminogen mAb	357500	10C-CR6065M1	For use in sandwich immunoassay
RBP4 mAb	M18612RB1	10-7955	RBP4 mAb	M18612RB2	10-7956	For use in sandwich immunoassay
RBP4 mAb	M18612RB3	10-7957	RBP4 mAb	M18612RB4	10-7958	For use in sandwich immunoassay
TAFI mAb	M18612TA1	10-7968	TAFI mAb	M18612TA2	10-7969	For use in sandwich immunoassay

■ Matched Pairs

* Can be used as capture and detection antibody

Capture Antibody/Antigen	Clone #	Catalog #	Detection Antibody	Clone #	Catalog #	Comments, Assay Type
TAFI mAb	M18612TA1	10-7968	TAFI mAb	M18612TA3	10-7970	For use in sandwich immunoassay
TAT mAb	M81668	10-2250	Antithrombin III mAb	M81669	10-2249	For use in sandwich immunoassays
TAT mAb	M81668	10-2250	Antithrombin III mAb (biotin)	M81669B	61-1047	For use in sandwich immunoassays
Trypsin mAb	M81576	10-1822 (biotin)	Trypsin mAb	M81576-B	61-1031	Antibody specific for human trypsin, trypsinogen and trypsin in complex with a1-antitrypsin

Capture Antibody/Antigen	Clone #	Catalog #	Detection Antibody	Clone #	Catalog #	Comments, Assay Type
Big Endothelin 1 mAb	M72049	10-2266	Big Endothelin 1 mAb	M72050	10-2267	Can be used as a pair in ELISA & Luminex Assays
BNP mAb	M18612BN1	10-7879	BNP mAb	M18612BN2	10-7880	For use in sandwich immunoassay
BNP mAb	M18612BN1	10-7879	BNP mAb	M18612BN3	10-7881	For use in sandwich immunoassay
BNP mAb	M18612BN1	10-7879	NT-proBNP mAb	M907241	10-N36A	Suitable for use in ELISA & WB
Canine NT-proBNP mAb	M86719	10-2734	Canine NT-proBNP mAb	M86718	10-2733	Detect canine proBNP in ELISA and Lateral Flow
Canine NT-proBNP Protein		30-1948				Control for 10-2734 / 10-2733 pair
proBNP mAb	M86554	10-2701	proBNP mAb	M86553	10-2700	Suitable for use in sandwich immunoassays
proBNP mAb	M72419	10-1710	proBNP mAb	M72418	10-1709	Pair for immunoassays. Use in WB also
CKBB mAb	M72057	10-2274	CKBB mAb	M72058	10-2275	Excellent pair for ELISA
CKMB mAb	M1709CKMB2	10-1364	CKMB mAb	M1709CKMB1	10-1363	Suitable for use in ELISA & Lateral Flow
CKMB mAb	M9910207	10-C40A	CKMM pAb		70-XG47	No crossreactivity with CK-BB or CK-MM
CKMB mAb	M9910208	10-C40B	CKMM pAb		70-XG47	No crossreactivity with CK-BB or CK-MM
CKMB mAb	M86543	10-2691	CKMB mAb	M86544	10-2692	Suitable for use in sandwich immunoassays
CKMB mAb (MM subunit)	M120222	10R-3127	CKMB mAb (MM subunit)	M9910207	10-C40A	Orientation should be optimized
CKBB pAb		20-CG72				Multiple lots available, varying titers
CKBB pAb		20-CR72				Suitable for EIA and RIA assay method, sensitive to ng/ml
CKMM pAb		20-CG75				Excellent antibody for EIA applications
CKMM pAb		20-CR75				Recommended for western blot at a 1:200 dilution
CRP mAb	M18612CRP1	10-7893	CRP mAb	M18612CRP2	10-7894	For use in sandwich immunoassay
CRP mAb	M12619CR1	10-C189B	CRP mAb	M12619CR2	10-C189A	For use in sandwich immunoassay
CRP mAb	M82954	10-2349	CRP mAb	M82955	10-2350	Excellent pairing for ELISA
CRP mAb	M701289	10-C33A	CRP mAb	M701288	10-C33C	Pair for ELISA. Also suitable for IHC & TBA
CRP pAb		20-CG15				Monospecific for CRP by IEP
CRP protein		30-AC05				>99% by SDS-PAGE
CRP protein		30C-CP1000U				>98% by SDS-PAGE
CRP protein		30-AC07				Single band at 23 kD by SDS-PAGE
CRP protein		30-AC10				>80% by SDS-PAGE
CRP calibrator		35-CC30				>20 mg/dL by Turbidimetric assay
Cystatin C mAb	M18612CC1	10-7884	Cystatin C mAb	M18612CC2	10-7885	For use in sandwich immunoassay
Cystatin C mAb	M18612CC3	10-7886	Cystatin C mAb	M18612CC4	10-7887	For use in sandwich immunoassay
*Cystatin C mAb	M72060	10-2277	Cystatin C mAb	M72060	10-2277	Can be used as a self matched pair in ELISA
*Cystatin C mAb	M72061	10-2278	Cystatin C mAb	M72061	10-2278	Can be used as a self matched pair in ELISA
D-Dimer mAb	M12156	10-1154	D-Dimer mAb	M12157	10-1155	Excellent pair for both ELISA assays and Flow Cytometry
D-Dimer mAb	M01102704	10-D42B	D-Dimer mAb	M01102703	10-D42A	No crossreactivity with D-monomer or Fibrinogen
D-Dimer mAb	M12619DD	10-D100A	D-Dimer mAb	M18612DD	10-7900	For use in sandwich immunoassay
D-Dimer mAb	M81474	10-1753	D-Dimer mAb (biotin)	M81465-B	61-1009	Excellent pair to detect D-dimer in sandwich immunoassays
D-Dimer mAb	M81465	10-1752	D-Dimer mAb (biotin)	M81465-B	61-1009	Excellent pair to detect D-dimer in sandwich immunoassays
D-Dimer protein		30R-AD001				>90% by SDS-PAGE
D-Dimer protein		30-AD41				ELISA grade
FABP mAb	M72069	10-2286	FABP mAb	M72068	10-2285	Excellent pair for ELISA for detection of intestine FABP
FABP mAb	M62843	10-1535	FABP mAb	M62844	10-1533	Specific for FABP in sandwich immunoassay, 10-1533 also for WB

■ Matched Pairs

* Can be used as capture and detection antibody

Capture Antibody/Antigen	Clone #	Catalog #	Detection Antibody	Clone #	Catalog #	Comments, Assay Type
FABP mAb	M62843	10-1535	FABP mAb	M62845	10-1534	Specific for FABP in sandwich immunoassay, 10-1534 also for WB
FABP mAb	M79189	10-F14B	FABP mAb	M79188	10-F14A	Specific for FABP in sandwich immunoassay
FABP mAb	M18612FB1	10-7904	FABP mAb	M18612FB2	10-7905	For use in sandwich immunoassay
FABP protein		30-AF14				>98 % by SDS-PAGE
FABP protein		30C-CP2049				>95% by SDS-PAGE
GPBB mAb	M18612GP1	10-7908	GPBB mAb	M18612GP2	10-7909	For use in sandwich immunoassay
GPBB mAb	M18612GP2	10-7909	GPBB mAb	M12619GP	10-G110A	For use in sandwich immunoassay
Myeloperoxidase mAb	M05011921	10-M92C	Myeloperoxidase mAb	M05011922	10-M92D	Reactive to human Myeloperoxidase
Myeloperoxidase mAb	M05011921	10-M92C	Myeloperoxidase mAb	M18612MY3	10-7934	For use in sandwich immunoassay
Myeloperoxidase mAb	M72086	10-2303	Myeloperoxidase mAb	M72087	10-2304	Can be used as a pair in ELISA & Luminex Assays
Myeloperoxidase protein		30-AM92				98% by SDS-PAGE
Myeloperoxidase protein		30R-AM031				>95 % by SDS-PAGE
Myoglobin mAb	M1709MG2	10-1362	Myoglobin mAb	M1709MG1	10-1361	For use in ELISA and Lateral Flow assays
Myoglobin mAb	M0110519	10-M50C	Myoglobin mAb	M0110520	10-M50D	Human cardiac Myoglobin immunoassay
Myoglobin mAb	M9983110	10-M50A	Myoglobin mAb	M012607	10-M50B	Human cardiac Myoglobin immunoassay
Myoglobin pAb		70-MG60				Specific for human Myoglobin by IEP
Myoglobin protein		30-AM20				>97% pure by SDS-PAGE
Myoglobin protein		30-AM21				~50% by SDS-PAGE
PAPPA mAb	M18612PP1	10-7951	PAPPA mAb	M18612PP2	10-7952	For use in sandwich immunoassay
PAPPA mAb	M81630	10-1957	PAPPA mAb	M81384	10-1746	Excellent antibody pair to detect human native PAPPA
PAPPA mAb	M998311	10-P66A	PAPPA mAb	M18612PP4	10-7954	For use in ELISA and other sandwich immunoassays
SAA mAb	M18612SA1	10-7959	SAA mAb	M18612SA2	10-7960	For use in sandwich immunoassay
ST2 mAb	M72103	10-2320	ST2 mAb	M72105	10-2322	Excellent pair for ELISA
Troponin C mAb	M5092922	10-T78A	Troponin C mAb	M12619TC2	10-1505	For use in sandwich immunoassay
Troponin C protein		30-AT44				>98% pure by SDS-PAGE
Troponin I mAb	M1709TI2	10-1360	Troponin I mAb	M1709TI1	10-1359	Suitable for use in ELISA & Lateral Flow
Troponin I mAb	M18612TI1	10-7965	Troponin I mAb	M709308	10-T79C	For use in sandwich immunoassay
Troponin I mAb	M805141	10-T79F	Troponin I mAb	M805142	10-T79C	Sensitive to 0.1 ng/ml by ELISA.
Troponin I mAb	M805142	10-T79C	Troponin I mAb	M8030409	10-T79J	Quantitative sandwich immunoassay
Troponin I mAb	M9011521	10-T79H	Troponin I mAb	M18612TI3	10-7967	For use in sandwich immunoassay
Troponin I mAb	M9011521	10-T79H	Troponin I mAb	M805142	10-T79C	Quantitative sandwich immunoassay
Troponin I mAb	9127435	10C-CR4036M6	Troponin I mAb	8127435	10C-CR4036M5	Specific for cardiac Troponin I
Troponin I mAb	M12619TI1	10-T126C	Troponin I mAb	M01013022	10-T81B	For use in sandwich immunoassay
Troponin mAb	M86614	10-2661	Troponin mAb	M86615	10-2662	Suitable pair for Lateral Flow assays
Troponin mAb	M86616	10-2663	Troponin mAb	M86615	10-2662	Suitable pair for Lateral Flow assays
Troponin I pAb		70C-CR4036GAP				Specific for cardiac Troponin I
Troponin I protein		30-AT43				>99% by SDS-PAGE
Troponin I protein		30R-AT034				0.1-5% of the total protein is Troponin I
Troponin I protein (Cardiac)	M72061	10-2278				Can be used as a self matched pair in ELISA
Troponin I Free Serum		90R-106				Pooled normal human serum
Troponin T mAb	M40283	10-T85E	Troponin T mAb (Cardiac)	M608299	10-T85F	Quantitative sandwich immunoassay
Troponin T mAb	M322512	10-T85A	Troponin T mAb (Cardiac)	M40283	10-T85B	Quantitative sandwich immunoassay
Troponin T mAb	M322512	10-T85A	Troponin T mAb (Cardiac)	M401134	10-T85C	Quantitative sandwich immunoassay
Troponin T protein		30-AT38				>98% pure by SDS-PAGE

Capture Antibody/Antigen	Catalog #	Detection Antibody	Clone #	Catalog #	Comments, Assay Type
Acepromazine-HRP	80-1097	Acepromazine pAb		20-1073	Excellent pair for ELISA
Aflatoxin-BSA	80-1049	Aflatoxin mAb	M1709Af1	10-1430	For use in ELISA and Lateral Flow
Aflatoxin-BSA	80-1049	Aflatoxin mAb	M86498	10-2675	For use in ELISA and Lateral Flow
Albendazole-HRP	80-1099	Albendazole pAb		20-1075	Excellent pair for ELISA
Albendazole-HRP	80-1098	Albendazole pAb		20-1078	Excellent pair for ELISA
Amikacin-HRP	80-1100	Amikacin pAb		20-1079	Excellent pair for ELISA
Amino Flunitrazepam	80-1101	Aminoflunitrazepam pAb		20-1084	Excellent pair for ELISA
Amitriptyline-HRP	80-1314	Amitriptyline pAb		20-1515	For use in ELISA and other sandwich immunoassays
Amphetamine-BSA	80-1038	Amphetamine mAb	M1709Am1	10-1365	Hapten conjugate pair for ELISA and Lateral Flow
Amphetamine-BSA	80-1038	Amphetamine mAb	M1709Am2	10-1366	Hapten conjugate pair for ELISA and Lateral Flow
Amphetamine-BSA	80-IA22	Amphetamine mAb	M994299	10-A44C	Lateral/Gold Conjugation
Amphetamine-BSA	80-IA23	Amphetamine mAb	M8122021	10-A44F	Lateral/Gold Conjugation
Amphetamine-BSA	80-IA24	Amphetamine mAb	M610256	10-A44E	AMP Urine Test
Amphetamine-BSA	80-IA22	Amphetamine mAb	M8122021	10-A44F	Lateral/Gold Conjugation
Amphetamine-HRP	80-1104	Amphetamine pAb		20-1090	For use in ELISA, WB, Dot Blot, IHC
Amphetamine-S HRP	65-IA52	Amphetamine mAb	M57649	10-1509	Suitable pairing for ELISA
Ampicillin-HRP	80-1102	Beta Lactam pAb		20-1088	For use in ELISA, WB, Dot Blot, IHC
Ampicillin-HRP	80-1103	Beta Lactam pAb		20-1088	Pair for ELISA. Also suitable for WB, Dot Blot, IHC
Apramycin-HRP	80-1106	Apramycin pAb		20-1125	Excellent pair for ELISA
Azaperone-HRP	80-1108	Azaperone pAb		20-1224	For use in ELISA, WB, Dot Blot, IHC
Bacitracin-HRP	80-1109	Bacitracin pAb		20-1185	Excellent pair for ELISA
Barbiturate-BSA	80-1039	Barbiturate mAb	M1709Bt1	10-1367	Hapten conjugate pair for ELISA and Lateral Flow
Barbital-BSA	80-IB21	Barbiturate mAb	M610258	10-B08B	Urine BAR Test
Benzodiazepine-BSA	80-1041	Benzoylcegonine/Cocaine mAb	M1709BC2	10-1372	Hapten conjugate pair for ELISA and Lateral Flow
Benzodiazepine-BSA	80-IB40	Benzodiazepine mAb	M998501	10-B12A	Lateral/Gold Conjugation
Benzodiazepine-BSA	80-IB42	Benzodiazepine mAb	M610255	10-B12B	BZO Urine Test, Lateral/Gold Conjugation
Benzodiazepine-BSA	80-IB42	Benzodiazepine pAb		20-B513	BZO Urine Test, Lateral/Gold Conjugation
Benzoylcegonine-BSA	80-IB31	Benzoylcegonine mAb	M8122022	10-B11G	Saliva Test
Benzoylcegonine-HRP	80-1128	Benzoylcegonine pAb		20-1405	Excellent pair for ELISA
Benzoylcegonine/Cocaine-BSA	80-1037	Benzoylcegonine/Cocaine mAb	M57674	10-1316	Suitable for use in ELISA & Lateral Flow
Benzoylcegonine/Cocaine-BSA	80-1037	Benzoylcegonine/Cocaine mAb	M1709BC1	10-1370	Hapten conjugate pair for ELISA and Lateral Flow
Benzoylcegonine/Cocaine-BSA	80-1037	Benzoylcegonine/Cocaine mAb	M1709BC2	10-1372	Hapten conjugate pair for ELISA and Lateral Flow
Boldenone-HRP	80-1110	Boldenone pAb		20-1380	For use in ELISA, WB, Dot Blot, IHC
17a Boldenone-HRP	80-1076	Boldenone pAb		20-1036	Excellent pair for ELISA
17b Boldenone-HRP	80-1081	17b Boldenone pAb		20-1046	For use in ELISA and other sandwich immunoassays
Buprenorphine-BSA	80-1040	Buprenorphine mAb	M1709Bu1	10-1368	Hapten conjugate pair for ELISA and Lateral Flow
Buprenorphine-HRP	80-1111	Buprenorphine pAb		20-1382	Excellent pair for ELISA
Carbadox-HRP	80-1114	Carbadox pAb		20-1182	Excellent pair for ELISA
Carbamazepine-HRP	80-1115	Carbamazepine pAb		20-1383	For use in ELISA, WB, Dot Blot, IHC
Ceftiofur-HRP	80-1116	Ceftiofur pAb		20-1159	Excellent pair for ELISA
Chloramphenicol-HRP	80-1118	Chloramphenicol pAb		20-1160	Excellent pair for ELISA
Chlormadinone acetate-HRP	80-1119	Chlormadinone acetate pAb		20-1388	For use in ELISA, WB, Dot Blot, IHC
Chlorpromazine-HRP	80-1120	Chlorpromazine pAb		20-1389	Excellent pair for ELISA

■ Matched Pairs

* Can be used as capture and detection antibody

Capture Antibody/Antigen	Catalog #	Detection Antibody	Clone #	Catalog #	Comments, Assay Type
Cimaterol-HRP	80-1121	Cimaterol pAb		20-1392	For use in ELISA, WB, Dot Blot, IHC
CLAD-HRP	80-1092	Androsten pAb		20-1064	Excellent pair for ELISA
CLAD-HRP	80-1125	CLAD pAb		20-1398	Excellent pair for ELISA
Clenbuterol-HRP	80-1122	Clenbuterol pAb		20-1394	For use in ELISA, WB, Dot Blot, IHC
Closantel-HRP	80-1123	Closantel pAb		20-1097	Excellent pair for ELISA
Clostebol 17b-HRP	80-1124	Clostebol pAb		20-1396	Excellent pair for ELISA
Cocaine-HRP	80-1127	Cocaine pAb		20-1399	For use in ELISA, WB, Dot Blot, IHC
Cocaine-HRP	80-1126	Cocaine pAb		20-1402	Excellent pair for ELISA
Codeine 6-HRP	80-1129	Codeine pAb		20-1408	For use in ELISA, WB, Dot Blot, IHC
Cyclopentobarbital-HRP	80-1135	Cyclopentobarbital pAb		20-1416	Excellent pair for ELISA
Dapsone-HRP	80-1136	Dapsone pAb		20-1418	Excellent pair for ELISA
Decoquinat-HRP	80-1137	Decoquinat pAb		20-1200	For use in ELISA, WB, Dot Blot, IHC
Desipramine-HRP	80-1140	Desipramine pAb		20-1431	Excellent pair for ELISA
Desipramine-HRP	80-1315	Desipramine pAb		20-1517	Excellent pair for ELISA
Desmethylnoproxen-HRP	80-1141	Desmethylnoproxen pAb		20-1433	For use in ELISA, WB, Dot Blot, IHC
Dexamethasone-HRP	80-1142	Dexamethasone 21 pAb		20-1436	Excellent pair for ELISA
Dextromethorphan-HRP	80-1143	Dextromethorphan pAb		20-1437	For use in ELISA, WB, Dot Blot, IHC
Diclazuril-HRP	80-1144	Diclazuril pAb		20-1223	Excellent pair for ELISA
Dicloxacillin-HRP	80-1145	Dicloxacillin pAb		20-1085	Excellent pair for ELISA
Dienestrol-HRP	80-1146	Dienestrol pAb		20-1441	Excellent pair for ELISA
Dienestrol-HRP	80-1147	Dienestrol pAb		20-1442	Excellent pair for ELISA
Diethylstilbestrol-HRP	80-1148	Diethylstilbestrol pAb		20-1447	Excellent pair for ELISA
Diethylstilbestrol-HRP	80-1149	Diethylstilbestrol pAb		20-1448	Excellent pair for ELISA
Digoxigenin-HRP	80-1150	Digoxigenin pAb		20-1449	Excellent pair for ELISA
Digoxin-HRP	80-1151	Digoxin pAb		20-1451	Excellent pair for ELISA
Digoxin pAb	20-DG10				High titer antibody, 10 liter sizes available as neat serum
Digoxin pAb	20-DR10				Suitable for ELISA, RIA, and WB
Dilantin pAb	20-DR15				Suitable for ELISA, IF, and RIA
Dinitrosalicylic Acid-HRP	80-1153	Dinitrosalicylic Acid pAb		20-1219	Excellent pair for ELISA
Dipyron-HRP	80-1154	Dipyron pAb		20-1456	Excellent pair for ELISA
Erythromycin-HRP	80-1157	Erythromycin pAb		20-1110	Excellent pair for ELISA
Escitalopram-HRP	80-1158	Escitalopram pAb		20-1468	Excellent pair for ELISA
Ethyl Glucuronide-BSA	80-1404	Ethyl-Glucuronide mAb	M83084	10-2356	Excellent pair for multiplex assays, ELISA & Lateral Flow
Ethyl Glucuronide-HRP	80-1165	Ethyl-Glucuronide pAb		20-1719	Suitable for use in sandwich immunoassays
Etodolac-HRP	80-1166	Etodolac pAb		20-1702	Excellent pair for ELISA
Fentanyl-HRP	80-1168	Despropionyl Fentanyl pAb		20-1556	For use in ELISA, WB, Dot Blot, IHC
Fentanyl-HRP	80-1167	Fentanyl pAb		20-1555	Excellent pair for ELISA
Fentanyl-BSA	80-1409	Fentanyl mAb	M83180	10-2446	Suitable pair for Lateral Flow
Florfenicol-HRP	80-1170	Florfenicol Amine pAb		20-1192	Excellent pair for ELISA
Flumequine-HRP	80-1171	Flumequine pAb		20-1157	Excellent pair for ELISA
Flumethasone-HRP	80-1172	Flumethasone pAb		20-1602	For use in ELISA, WB, Dot Blot, IHC
Flunixin-HRP	80-1173	Flunixin COOH pAb		20-1606	For use in ELISA, WB, Dot Blot, IHC

■ Matched Pairs

* Can be used as capture and detection antibody

Capture Antibody/Antigen	Catalog #	Detection Antibody	Clone #	Catalog #	Comments, Assay Type
Flunixin-HRP	80-1174	Flunixin pAb		20-1603	Excellent pair for ELISA
Furosemide pAb	20-FR85				~60,000 tests/ml by EIA
Gentamycin-HRP	80-1175	Gentamycin pAb		20-1112	Excellent pair for ELISA
Gestrinone-HRP	80-1176	Gestrinone pAb		20-1608	Excellent pair for ELISA
Halofuginone-HRP	80-1177	Halofuginone pAb		20-1208	For use in ELISA, WB, Dot Blot, IHC
Haloperidol-HRP	80-1178	Haloperidol pAb		20-1500	For use in ELISA, WB, Dot Blot, IHC
Haloperidol pAb	20-HR19				1 : 5,000 by ELISA
Heroin-HRP	80-1179	Heroin pAb		20-1488	For use in ELISA, WB, Dot Blot, IHC
Hydrocodone-HRP	80-1181	Hydrocodone pAb		20-1574	Excellent pair for ELISA
Hydromorphone-HRP	80-1182	Hydromorphone pAb		20-1573	Excellent pair for ELISA
Imipramine-HRP	80-1316	Imipramine pAb		20-1519	Excellent pair for ELISA
Isoxsuprine-HRP	80-1183	Isoxsuprine pAb		20-1679	Excellent pair for ELISA
Ivermectin-HRP	80-1184	Ivermectin pAb		20-1103	Excellent pair for ELISA
JWH018-HRP	80-1185	JWH 018 pAb		20-1494	For use in ELISA, WB, Dot Blot, IHC
JWH018-HRP	80-1186	JWH 018 pAb		20-1496	Excellent pair for ELISA
K2-BSA	80-1406	K2 mAb	M83174	10-2448	Suitable pair for Lateral Flow
K2-BSA	80-1407S	K2 pAb		70-1080S	Suitable pair for Lateral Flow & ELISA
Kanamycin-HRP	80-1187	Kanamycin pAb		20-1183	Excellent pair for ELISA
Kebuzone-HRP	80-1188	Kebuzone pAb		20-1686	Excellent pair for ELISA
Ketamine-HRP	80-1189	Ketamine pAb		20-1493	For use in ELISA, WB, Dot Blot, IHC
Ketoprofen-HRP	80-1190	Ketoprofen pAb		20-1688	Excellent pair for ELISA
LAAM-HRP	80-1193	Levomethadyl acetate pAb		20-1584	Excellent pair for ELISA
Lasalocid A-HRP	80-1191	Lasalocid pAb		20-1214	Excellent pair for ELISA
Leucomalachite green-HRP	80-1192	Malachite Green pAb		20-1184	Excellent pair for ELISA
Lorazepam-HRP	80-1195	Lorazepam pAb		20-1230	Excellent pair for ELISA
Lorazepam-HRP	80-1194	Lorazepam pAb		20-1243	Excellent pair for ELISA
LSD-HRP	80-1196	LSD pAb		20-1585	Excellent pair for ELISA
Maduramicin-HRP	80-1197	Maduramicin pAb		20-1204	Excellent pair for ELISA
Meloxicam-HRP	80-1202	Meloxicam pAb		20-1694	Excellent pair for ELISA
Meperidine-HRP	80-1203	Normeperidine pAb		20-1589	Excellent pair for ELISA
Meprobamate-HRP	80-1204	Meprobamate pAb		20-1464	Excellent pair for ELISA
Mescaline-HRP	80-1205	Mescaline pAb		20-1598	Excellent pair for ELISA
Mestanolone-HRP	80-1206	Mestanolone pAb		20-1636	For use in ELISA, WB, Dot Blot, IHC
Methadol-HRP	80-1209	Methadol pAb		20-1578	For use in ELISA, WB, Dot Blot, IHC
Methadone-BSA	80-1046	Methadone mAb	M1709Md1	10-1381	Hapten conjugate pair for ELISA and Lateral Flow
Methadone-BSA	80-1046	Methadone mAb	M1709Md2	10-1382	Hapten conjugate pair for ELISA and Lateral Flow
Methadone-BSA	80-IM40	Methadone mAb	M999921	10-M01A	Lateral/Gold Conjugation
Methadone-BSA	80-IM56	Methadone mAb	M610245	10-M01B	MTD Urine Test
Methadone-BSA	80-IM55	Methadone mAb	M081030	10-M01C	Lateral/Gold Conjugation
Methadone-HRP	80-1207	Methadone P pAb		20-1576	Excellent pair for ELISA
Methadone-HRP	80-1208	Methadone pAb		20-1577	Excellent pair for ELISA

■ Matched Pairs

* Can be used as capture and detection antibody

Capture Antibody/Antigen	Catalog #	Detection Antibody	Clone #	Catalog #	Comments, Assay Type
Methamphetamine-BSA	80-1043	Methamphetamine mAb	M1709Mp1	10-1373	Hapten conjugate pair for ELISA and Lateral Flow
Methamphetamine-BSA	80-1043	Methamphetamine mAb	M1709Mp2	10-1374	Hapten conjugate pair for ELISA and Lateral Flow
Methamphetamine-BSA	80-1043	Methamphetamine mAb	M1709Mp3	10-1375	Hapten conjugate pair for ELISA and Lateral Flow
Methamphetamine-BSA	80-IM54	Methamphetamine mAb	M9942911	10-M25B	Lateral/Gold Conjugation
Methamphetamine-BSA	80-IM54	Methamphetamine mAb	M352009	10-M25C	Lateral/Gold Conjugation
Methamphetamine-BSA	80-IM59	Methamphetamine mAb	M610244	10-M25D	M-AMP Urine Test
Methamphetamine-BSA	80-IM59	Methamphetamine mAb	M610252	10-M25E	M-AMP Urine Test
Methamphetamine-HRP	65-1M52	Methamphetamine mAb	M86709	10-2731	Suitable pair for ELISA & Lateral Flow
Methamphetamine-HRP	80-1210	Methamphetamine N pAb		20-1580	Excellent pair for ELISA
Methamphetamine-HRP	80-1212	Methamphetamine P NH2 pAb		20-1581	Excellent pair for ELISA
Methamphetamine-HRP	80-1211	Methamphetamine P pAb		20-1579	Excellent pair for ELISA
Methandriol-HRP	80-1213	Methandriol pAb		20-1655	Excellent pair for ELISA
Methaqualone-HRP	80-1214	Methaqualone 4 pAb		20-1582	For use in ELISA, WB, Dot Blot, IHC
Methaqualone-HRP	80-1216	Methaqualone 5 pAb		20-1583	Excellent pair for ELISA
Methaqualone-HRP	80-1215	Methaqualone 6 pAb		20-1557	Excellent pair for ELISA
Methotrexate-HRP	80-1217	Methotrexate pAb		20-1472	Excellent pair for ELISA
MDMA-BSA	80-1033	MDMA mAb	M120509	10-1029	Excellent pair for rapid test
MDMA-BSA	80-1044	MDMA mAb	M1709MD1	10-1376	Hapten conjugate pair for ELISA and Lateral Flow
MDMA-BSA	80-1044	MDMA mAb	M1709MD2	10-1377	Hapten conjugate pair for ELISA and Lateral Flow
MDMA-BTG	80-IM03	MDMA mAb	M4020517	10-M03A	Ecstasy/MDMA Urine Test
MDMA-HRP	80-1091	3,4 MDMA pAb		20-1062	Excellent pair for ELISA
Methylprednisolone-HRP	80-1219	Methylprednisolone pAb		20-1696	For use in ELISA, WB, Dot Blot, IHC
Monensin-HRP	80-1221	Monensin pAb		20-1215	Excellent pair for ELISA
Morphine 3 pAb	20-MG05				1:500,000 in 3H Radioimmunoassay
Morphine 6 pAb	20-MG07				1:100,000 in 3H Radioimmunoassay
Morphine-BSA	80-1045	Morphine mAb	M1709Mor3	10-1380	Suitable for use in ELISA & Lateral Flow
Morphine-BSA	80-1045	Morphine mAb	M1709MD1	10-1378	Hapten conjugate pair for ELISA and Lateral Flow
Morphine-BSA	80-1045	Morphine mAb (High Sensitivity)	M1709MD2	10-1379	Hapten conjugate pair for ELISA and Lateral Flow
Morphine-BSA	80-IM50	Morphine mAb	M9942910	10-M18A	Lateral/Gold Conjugation
Morphine-BSA	80-IM50	Morphine mAb	M351909	10-M18C	Lateral/Gold Conjugation
Morphine-BSA	80-IM52	Morphine mAb	M9942910	10-M18A	Lateral/Gold Conjugation
Morphine-BSA	80-IM52	Morphine mAb	M351909	10-M18C	Lateral/Gold Conjugation
Morphine-BSA	80-IM52	Morphine mAb	M351908	10-M18D	Lateral/Gold Conjugation
Morphine-BSA	80-IM53	Morphine mAb	M9942910	10-M18A	Lateral/Gold Conjugation
Morphine-BTG	80-IM60	Morphine mAb	M610242	10-M18E	MOR Urine Test
Morphine-BTG	80-IM60	Morphine mAb	M911401	10-M18J	MOR Urine Test
Morphine-BTG	80-IM60	Morphine mAb	M911402	10-M18K	MOR Urine Test
Morphine-BTG	80-IM60	Morphine + Oxycodone mAb	M610251	10-M18G	Pick-up Both MOR and OXY in the Urine Test
Morphine-BTG	80-IM60	Morphine + Oxycodone mAb	M610243	10-M18H	Pick-up both MOR and OXY in the Urine Test
Morphine-BTG	80-1565	Morphine 3 mAb	M12951	10C-CR2091M3	User optimized
Morphine-HRP	80-1223	Morphine 3 pAb		20-1558	Excellent pair for ELISA
Morphine-HRP	80-1224	Morphine 6 hemisuccinate pAb		20-1482	For use in ELISA, WB, Dot Blot, IHC

■ Matched Pairs

* Can be used as capture and detection antibody

Capture Antibody/Antigen	Catalog #	Detection Antibody	Clone #	Catalog #	Comments, Assay Type
Morphine-HRP	80-1222	Morphine 6 pAb		20-1559	Excellent pair for ELISA
Mycophenolic Acid-HRP	80-1225	Mycophenolic Acid pAb		20-1591	For use in ELISA, WB, Dot Blot, IHC
Nalidixic Acid-HRP	80-1226	Nalidixic Acid pAb		20-1122	Excellent pair for ELISA
Naltrexone-HRP	80-1227	Naltrexone pAb		20-1462	Excellent pair for ELISA
Neomycin-HRP	80-1228	Neomycin pAb		20-1161	Excellent pair for ELISA
Nicarbazin-HRP	80-1229	Nicarbazin pAb		20-1216	Excellent pair for ELISA
Nitrazepam-HRP	80-1231	Nitrazepam pAb		20-1242	For use in ELISA, WB, Dot Blot, IHC
Nitrobenzene-HRP	80-1230	Nicarbazin pAb		20-1217	Excellent pair for ELISA
Nitrophenyl-AMOZ	80-1094	4 Nitrophenyl AMOZ pAb		20-1071	Excellent pair for ELISA
Nitrophenyl-AOZ	80-1095	4 Nitrophenyl AOZ pAb		20-1069	Excellent pair for ELISA
Nitrophenyl-HRP	80-1093	4 Nitrophenyl AHD pAb		20-1067	Excellent pair for ELISA
Nitrophenyl-SEM	80-1096	4 Nitrophenyl SEM pAb		20-1068	Excellent pair for ELISA
Norbuprenorphine-HRP	80-1112	Norbuprenorphine pAb		20-1587	Excellent pair for ELISA
Norescitalopram-HRP	80-1232	Norescitalopram pAb		20-1466	Excellent pair for ELISA
Norfloracin-HRP	80-1233	Norfloracin pAb		20-1156	Excellent pair for ELISA
Norfluoxetine-HRP	80-1234	Norfluoxetine pAb		20-1470	For use in ELISA, WB, Dot Blot, IHC
Norsertaline-HRP	80-1235	Norsertaline pAb		20-1486	For use in ELISA, WB, Dot Blot, IHC
Nortriptyline-HRP	80-1317	Nortriptyline pAb		20-1521	Excellent pair for ELISA
Olaquinox-HRP	80-1236	Olaquinox pAb		20-1108	Excellent pair for ELISA
Ormetoprim-HRP	80-1237	Ormetoprim pAb		20-1127	Excellent pair for ELISA
Oxazepam-HRP	80-1240	Oxazepam 3 pAb		20-1240	For use in ELISA, WB, Dot Blot, IHC
Oxazepam-HRP	80-1241	Oxazepam N pAb		20-1239	For use in ELISA, WB, Dot Blot, IHC
Oxazepam-HRP	80-1238	Oxazepam pAb		20-1226	For use in ELISA, WB, Dot Blot, IHC
Oxazepam-HRP	80-1239	Oxazepam pAb		20-1228	Excellent pair for ELISA
Oxycodone-BSA	80-1047	Oxycodone mAb	M17090x1	10-1383	Hapten conjugate pair for ELISA and Lateral Flow
Oxycodone-BSA	80-1047	Oxycodone mAb	M17090x2	10-1384	Hapten conjugate pair for ELISA and Lateral Flow
Oxycodone-BSA	80-1018	Oxycodone mAb	M610246	10-018A	OXY Urine Test
Oxycodone-BSA	80-1018	Oxycodone mAb	M610254	10-018C	OXY Urine Test
Oxycodone-HRP	80-1242	Oxycodone 6 pAb		20-1560	For use in ELISA, WB, Dot Blot, IHC
Oxycodone-HRP	80-1243	Oxycodone N pAb		20-1561	For use in ELISA, WB, Dot Blot, IHC
Oxyphenbutazone-HRP	80-1249	Phenylbutazone pAb		20-1700	For use in ELISA, WB, Dot Blot, IHC
Phencyclidine-BSA	80-IP10	Phencyclidine mAb	M9903239	10-P73B	Lateral/Gold Conjugation
Phencyclidine-HRP	80-1246	Phencyclidine pAb		20-1562	For use in ELISA, WB, Dot Blot, IHC
Phencyclidine-HRP	80-1245	Phencyclidine pAb		20-1564	For use in ELISA, WB, Dot Blot, IHC
Phencyclidine-HRP	80-1244	Phencyclidine pAb		20-1565	For use in ELISA, WB, Dot Blot, IHC
Phenobarbital-HRP	80-1247	Phenobarbital pAb		20-1566	For use in ELISA, WB, Dot Blot, IHC
Phenobarbital-HRP	80-1248	Phenobarbital pAb		20-1567	For use in ELISA, WB, Dot Blot, IHC
Phenytoin-HRP	80-1250	Phenytoin pAb		20-1592	For use in ELISA, WB, Dot Blot, IHC
Pirlimycin-HRP	80-1251	Pirlimycin pAb		20-1191	Excellent pair for ELISA
Prednisolone-HRP	80-1252	Prednisolone pAb		20-1698	Excellent pair for ELISA
Propoxyphene-BSA	80-1408	Propoxyphene mAb	M83178	10-2447	Suitable pair for Lateral Flow
Propoxyphene-HRP	80-1257	Norpropoxyphene pAb		20-1568	Excellent pair for ELISA
Propoxyphene-HRP	80-1256	Propoxyphene pAb		20-1569	Excellent pair for ELISA

■ Matched Pairs

* Can be used as capture and detection antibody

Capture Antibody/Antigen	Catalog #	Detection Antibody	Clone #	Catalog #	Comments, Assay Type
Ractopamine-HRP	80-1258	Ractopamine pAb		20-1668	For use in ELISA, WB, Dot Blot, IHC
Ritodrine-HRP	80-1259	Ritodrine pAb		20-1626	For use in ELISA, WB, Dot Blot, IHC
Robenidine-HRP	80-1260	Robenidine pAb		20-1206	Excellent pair for ELISA
Ronidazole-HRP	80-1261	Ronidazole pAb		20-1155	Excellent pair for ELISA
Salbutamol-HRP	80-1262	Salbutamol pAb		20-1670	For use in ELISA, WB, Dot Blot, IHC
Salicylic Acid-HRP	80-1264	Salicylic Acid pAb		20-1594	For use in ELISA, WB, Dot Blot, IHC
Salinomycin-HRP	80-1265	Salinomycin pAb		20-1202	Excellent pair for ELISA
Salvinorin-HRP	80-1156	Epi Demethyl Salvinorin pAb		20-1490	For use in ELISA, WB, Dot Blot, IHC
Salvinorin-HRP	80-1267	Salvinorin A pAb		20-1596	Excellent pair for ELISA
Secobarbital-HRP	80-1268	Secobarbital pAb		20-1513	Excellent pair for ELISA
Secobarbital-HRP	80-1269	Secobarbital pAb		20-1554	For use in ELISA, WB, Dot Blot, IHC
Spectinomycin-HRP	80-1270	Spectinomycin pAb		20-1106	Excellent pair for ELISA
Spiramycin-HRP	80-1271	Spiramycin pAb		20-1158	Excellent pair for ELISA
Stanozolol-HRP	80-1272	Stanozolol pAb		20-1675	For use in ELISA, WB, Dot Blot, IHC
Streptomycin-HRP	80-1273	Streptomycin pAb		20-1163	Excellent pair for ELISA
Sulfabenzamide-HRP	80-1274	Sulphabenzamide pAb		20-1193	Excellent pair for ELISA
Sulguanidine-HRP	80-1279	Sulphaguanidine pAb		20-1167	Excellent pair for ELISA
Sulguanidine-HRP	80-1280	Sulphaguanidine pAb		20-1168	Excellent pair for ELISA
Sulphachlorpyridazine-HRP	80-1275	Sulphachloropyrazine pAb		20-1706	Suitable for sandwich ELISA
Sulphadiazine-HRP	80-1276	Sulphadiazine pAb		20-1164	Excellent pair for ELISA
Sulphadimethoxine-HRP	80-1277	Sulphadimethoxine pAb		20-1165	Excellent pair for ELISA
Sulphadoxine-HRP	80-1278	Sulphadoxine pAb		20-1166	Excellent pair for ELISA
Sulphamerazine-HRP	80-1281	Sulphamerazine pAb		20-1169	Excellent pair for ELISA
Sulphamerazine-HRP	80-1282	Sulphamerazine pAb		20-1170	Excellent pair for ELISA
Sulphamethazine-HRP	80-1283	Sulphamethazine pAb		20-1171	Excellent pair for ELISA
Sulphanilamide-HRP	80-1284	Sulphanilamide pAb		20-1172	Excellent pair for ELISA
Sulphanitran-HRP	80-1285	Sulphanitran pAb		20-1708	Excellent pair for ELISA
Sulphaphenazole-HRP	80-1286	Sulphaphenazole pAb		20-1190	Excellent pair for ELISA
Sulphapyridine-HRP	80-1287	Sulphapyridine pAb		20-1181	Excellent pair for ELISA
Sulphaquinoxaline-HRP	80-1288	Sulphaquinoxaline pAb		20-1173	Excellent pair for ELISA
Sulphathiazole-HRP	80-1289	Sulphathiazole pAb		20-1174	Excellent pair for ELISA
Sulphatroxazole-HRP	80-1290	Sulphatroxazole pAb		20-1198	Excellent pair for ELISA
Tacrolimus-HRP	80-1291	Tacrolimus 22 pAb		20-1195	Excellent pair for ELISA
Tacrolimus-HRP	80-1292	Tacrolimus 32 pAb		20-1197	Excellent pair for ELISA
Temazepam-HRP	80-1293	Temazepam pAb		20-1241	For use in ELISA, WB, Dot Blot, IHC
Tetracycline-BTG	80-1296	Tetracycline pAb		20-1176	For use in ELISA, WB, Dot Blot, IHC
Tetracycline-HRP	80-1295	Tetracycline pAb		20-1175	For use in ELISA, WB, Dot Blot, IHC
THC-BSA	80-1051	THC mAb	M1709THC2	10-1388	Suitable for use in ELISA & Lateral Flow
THC-BSA	80-IT62	THC mAb	M410277	10-T43B	Lateral/Gold Conjugation
THC-BSA	80-IT62	THC mAb	M8122023	10-T43G	Lateral/Gold Conjugation
THC-BSA	80-IT63	THC mAb	M4020411	10-T43E	THC Urine Test
THC-HRP	80-1299	Tetrahydrocannabinol pAb		20-1572	For use in ELISA, WB, Dot Blot, IHC D8

■ Matched Pairs

* Can be used as capture and detection antibody

Capture Antibody/Antigen	Catalog #	Detection Antibody	Clone #	Catalog #	Comments, Assay Type
D8 THC-HRP	80-1298	THC pAb		20-1571	For use in ELISA, WB, Dot Blot, IHC
D9 THC-HRP	80-1297	THC pAb		20-1570	For use in ELISA, WB, Dot Blot, IHC
Theophylline 8 pAb	20-TR158				500,000 tests /ml in 125I RIA
Theophylline-HRP	80-1300	Theophylline pAb		20-1709	For use in ELISA, WB, Dot Blot, IHC
Thiabendazole-HRP	80-1302	Thiabendazole pAb		20-1095	Excellent pair for ELISA
Thiabendazole-HRP	80-1301	Thiabendazole pAb		20-1100	Excellent pair for ELISA
Thiamphenicol-HRP	80-1303	Thiamphenicol pAb		20-1177	Excellent pair for ELISA
Tobramycin-HRP	80-1304	Tobramycin pAb		20-1178	Excellent pair for ELISA
Tolfenamic Acid-HRP	80-1305	Tolfenamic acid pAb		20-1704	Excellent pair for ELISA
Toltrazuril-HRP	80-1306	Toltrazuril pAb		20-1221	Excellent pair for ELISA
Tramadol-HRP	80-1307	Tramadol 3 pAb		20-1511	Excellent pair for ELISA
Tramadol-HRP	80-1308	Tramadol N pAb		20-1512	Excellent pair for ELISA
Trazodone-HRP	80-1309	Trazodone pAb		20-1458	Excellent pair for ELISA
Trazodone-HRP	80-1310	Trazodone pAb		20-1460	Excellent pair for ELISA
Triamcinolone Acetonide-HRP	80-1312	Triamcinolone Acetonide pAb		20-1611	Excellent pair for ELISA
Triclabendazole-HRP	80-1313	Triclabendazole pAb		20-1102	Excellent pair for ELISA
Tricyclic Antidepressants-BSA	80-1048	Tricyclic Antidepressants mAb	M1709TCA1	10-1385	Hapten conjugate pair for ELISA and Lateral Flow
Tricyclic Antidepressant-BSA	80-IT68	Tricyclic Antidepressants mAb	M9910206	10-T55A	For use in sandwich immunoassays
Tricyclic Antidepressant-BSA	80-IT71	Tricyclic Antidepressants mAb	M9910206	10-T55A	Lateral/Gold Conjugation
Tricyclic Antidepressant-BSA	80-IT69	Tricyclic Antidepressants mAb	M610257	10-T55B	TCA Urine Test, Automation System
Trimethoprim-HRP	80-1318	Trimethoprim pAb		20-1154	Excellent pair for ELISA
Tylosin-HRP	80-1319	Tylosin pAb		20-1179	Excellent pair for ELISA
Urochloralic Acid-HRP	80-1320	Urochloralic Acid pAb		20-1474	Excellent pair for ELISA
Virginiamycin-HRP	80-1321	Virginiamycin pAb		20-1180	Excellent pair for ELISA
Warfarin-HRP	80-1322	Warfarin pAb		20-1711	Excellent pair for ELISA
Zaleplon-HRP	80-1323	Zaleplon pAb		20-1600	For use in ELISA, WB, Dot Blot, IHC
Zearalanone-HRP	80-1324	Zeranol pAb		20-1673	For use in ELISA, WB, Dot Blot, IHC
Zeranol-HRP	80-1326	Zearalanone pAb		20-1634	For use in ELISA, WB, Dot Blot, IHC
Zeranol-HRP	80-1325	Zeranol pAb		20-1674	For use in ELISA, WB, Dot Blot, IHC
Zilpaterol-HRP	80-1327	Zilpaterol pAb		20-1627	For use in ELISA, WB, Dot Blot, IHC
Zolpidem-HRP	80-1328	Zolpidem pAb		20-1479	Excellent pair for ELISA
Zopiclone-HRP	80-1329	Zopiclone pAb		20-1481	For use in ELISA, WB, Dot Blot, IHC

■ Matched Pairs

* Can be used as capture and detection antibody

Hormones & Steroids

Capture Antibody/Antigen	Clone #	Catalog #	Detection Antibody	Clone #	Catalog #	Comments, Assay Type
Adiponectin mAb	M72044	10-2354	Adiponectin mAb	M72045	10-2262	Excellent pair for ELISA
Adiponectin mAb	M18612AD1	10-7815	Adiponectin mAb	M18612AD2	10-7816	Excellent pair for ELISA
Adiponectin mAb	M18612AD3	10-7817	Adiponectin mAb	M18612AD4	10-7818	For med/high MW adiponectin detection in sandwich assay
Adiponectin mAb	M18612AD2	10-7816	Adiponectin mAb	M18612AD5	10-7819	For low MW adiponectin detection in sandwich assay
Adiponectin mAb	M72046	10-2263	Adiponectin mAb	M18612AD5	10-7819	Can be used as a self matched pair in ELISA
Aldosterone 3 pAb		20-AR23				Multiple lots available, varying titers
Androstenedione-HRP		80-1105	Androstenedione pAb		20-1094	Excellent pair for ELISA
Calcitonin mAb	M72052	10-2269	Calcitonin mAb	M72051	10-2268	Excellent pair for ELISA. 10-2268 also detects Procalcitonin
Calcitonin mAb	M18612CT2	10-7892	Calcitonin mAb	M18612CT1	10-7891	Excellent pair for immunoassays
Calcitonin mAb	M83133	61-1050	Calcitonin mAb	M83093	10-2364	Use for native/recombinant ELISA & Lateral Flow
Calcitonin mAb	M83133	61-1050	Calcitonin mAb	M83094	10-2365	Use for native/recombinant ELISA & Lateral Flow
Calcitonin mAb	M83133	61-1050	Calcitonin mAb	M83095	10-2366	Use for native/recombinant ELISA & Lateral Flow
Calcitonin mAb	M83131	10-2367	Calcitonin mAb	M83093	10-2364	Use for native/recombinant ELISA & Lateral Flow
Calcitonin mAb	M83131	10-2367	Calcitonin mAb	M83094	10-2365	Use for native/recombinant ELISA & Lateral Flow
Calcitonin mAb	M83131	10-2367	Calcitonin mAb	M83095	10-2366	Use for native/recombinant ELISA & Lateral Flow
Calcitonin mAb	M83132	10-2368	Calcitonin mAb	M83093	10-2364	Use for native/recombinant ELISA & Lateral Flow
Calcitonin mAb	M83132	10-2368	Calcitonin mAb	M83094	10-2365	Use for native/recombinant ELISA & Lateral Flow
Calcitonin mAb	M83132	10-2368	Calcitonin mAb	M83095	10-2366	Use for native/recombinant ELISA & Lateral Flow
Cortisol 3 pAb		20-CR50				Some lots are excellent for coated tube application
Cortisol 4-HRP		80-1130	Cortisol pAb		20-1410	Excellent pair for ELISA
Cortisol mAb	M021509	10-C30D	Cortisol 3 CMO-HRP		65-IC08	Recommended for ELISA
Cortisone-HRP		80-1131	Cortisone pAb		20-1411	Excellent pair for ELISA
Cotinine-HRP		80-1403	Cotinine pAb		20-1713	For use in ELISA and other sandwich immunoassays
Creatinine N-HRP		80-1132	Creatinine N pAb		20-1373	Excellent pair for ELISA
Creatinine-HRP		80-1133	Creatinine Acid pAb		20-1244	Excellent pair for ELISA
Dehydromethyltestosterone-HRP		80-1139	Dehydromethyltestosterone 3 pAb		20-1426	For use in ELISA and other sandwich immunoassays
DHEA 17-HRP		80-1055	DHEA pAb		20-1422	For use in ELISA, WB, Dot Blot, IHC
DHEA 3 Sulfate pAb		20-DR83	DHEA 3-HRP		65-ID83	Recommended for ELISA
DHEA 3 Sulfate pAb		20-DR83				Titer: 16,000 tests/ml by RIA
Dihydrotestosterone-HRP		80-1152	Dihydrotestosterone pAb		20-1454	Excellent pair for ELISA
Epiandrosterone-HRP		80-1155	Epiandrosterone pAb		20-1677	Excellent pair for ELISA
Erythropoietin mAb	M18612EP2	10-7902	Erythropoietin mAb	M18612EP1	10-7901	For use in sandwich immunoassay
Erythropoietin mAb	M12619EP2	10-E115A	Erythropoietin mAb	M12619EP1	10-E115B	For use in sandwich immunoassay
Estradiol pAb		20-EG05				1:1,100,000 solid phase RIA and EIA
17a Estradiol-HRP		80-1077	17a Estradiol pAb		20-1662	Excellent pair for ELISA
17b Estradiol Long Linker-HRP		80-1083	17b Estradiol 6 pAb		20-1664	Excellent pair for ELISA
17b Estradiol Short Linker-HRP		80-1084	17b Estradiol 6 pAb		20-1665	Excellent pair for ELISA
17b Estradiol-HRP		80-1082	17b Estradiol 3 pAb		20-1676	Excellent pair for ELISA
Estriol 6 pAb		20-ER12				Highly Specific 6 position antibody (CMO-BSA). Many lots available
Estriol-HRP		80-1161	Estriol 6 pAb		20-1632	Excellent pair for ELISA
Estriol-HRP		80-1162	Estriol 6a pAb		20-1630	Excellent pair for ELISA
Estriol-HRP		80-1160	Estriol pAb		20-1609	Excellent pair for ELISA
Estriol-HRP		80-1159	Estriol pAb		20-1681	Excellent pair for ELISA

■ Matched Pairs

* Can be used as capture and detection antibody

Capture Antibody/Antigen	Clone #	Catalog #	Detection Antibody	Clone #	Catalog #	Comments, Assay Type
Ethinylestradiol-HRP		80-1163	Ethinyl Estradiol 3 pAb		20-1660	Excellent pair for ELISA
Ethinylestradiol-HRP		80-1164	Ethinyl Estradiol 6 pAb		20-1661	Excellent pair for ELISA
FSH mAb	M607109	10-F15D	FSH beta mAb	M94167	10-F25A	Very good pair for ELISA
FSH mAb	M94167	10-F25A	FSH beta mAb	M94170	10-F25C	Very good pair for ELISA
FSH mAb	M18612FSH1	10-7978	FSH mAb	M18612FSH2	10-7979	Excellent pair for ELISA
FSH mAb	M83135	10-2382	FSH mAb	M83096	10-2380	Use for native/recombinant ELISA & Lateral Flow
FSH mAb	M83135	10-2382	FSH mAb	M83097	10-2381	Use for native/recombinant ELISA & Lateral Flow
FSH pAb		20-FR10				Many excellent lots available. Some titers as high as 1/75,000.
FSH pAb		20-FR11				Suitable in RIA using an I125 tracer and IHC techniques
FSH protein		30-AF45				>98% by SDS-PAGE analysis
GCSF mAb	M18612GC1	10-7910	GCSF mAb	M18612GC2	10-7911	For use in sandwich immunoassay
GCSF mAb	M18612GC3	10-7912	GCSF mAb	M18612GC4	10-7913	For use in sandwich immunoassay
hCG alpha mAb	M18612HC1	10-7980	hCG beta mAb	M18612HC2	10-7981	Excellent pair for ELISA
hCG alpha pAb		70-1016	TSH (intact) pAb		70-1014	For use in ELISA and Lateral Flow
hCG alpha mAb	M1709HCGa1	10-1318	hCG beta mAb	M1709HCGb1	10-1317	Suitable for use in ELISA & Lateral Flow
hCG alpha mAb	M1709HCGa2	10-1320	hCG beta mAb	M1709HCGb2	10-1319	Use to detect hCG in Urine/Serum Combo Test
hCG mAb	M71870	10-1703	hCG alpha mAb	M72617	10-1715	Specific for epitopes 6 & 4 alpha subunits respectively
hCG mAb	M71870	10-1703	hCG alpha mAb	M72618	10-1716	Specific for epitopes 6 & 5 alpha subunits respectively
hCG alpha pAb		20-CR30				1: 350,000 by ELISA
beta hCG mAb	M83140	10-2379	beta hCG mAb	M83098	10-2374	Use for native/recombinant ELISA & Lateral Flow
beta hCG mAb	M83140	10-2379	beta hCG mAb	M83099	10-2375	Use for native/recombinant ELISA & Lateral Flow
beta hCG mAb	M83140	10-2379	beta hCG mAb	M83100	10-2376	Use for native/recombinant ELISA & Lateral Flow
beta hCG mAb	M83140	10-2379	beta hCG mAb	M83101	10-2377	Use for native/recombinant ELISA & Lateral Flow
beta hCG mAb	M83139	61-1051	beta hCG mAb	M83098	10-2374	Use for native/recombinant ELISA & Lateral Flow
beta hCG mAb	M83139	61-1051	beta hCG mAb	M83099	10-2375	Use for native/recombinant ELISA & Lateral Flow
beta hCG mAb	M83139	61-1051	beta hCG mAb	M83100	10-2376	Use for native/recombinant ELISA & Lateral Flow
beta hCG mAb	M83139	61-1051	beta hCG mAb	M83101	10-2377	Use for native/recombinant ELISA & Lateral Flow
hCG beta pAb		20-CG35				Highly specific and sensitive to hCG. Liter quantities available
hCG beta pAb		20-CR35				Highly specific and sensitive to hCG. Large quantities available
hCG beta protein		30-AC50				>98% pure by SDS-PAGE analysis
hCG mAb	M94138	10-C25D	hCG beta mAb	M94139.7	10-C25E	Best pair for a rapid test
hCG mAb	M94138	10-C25D	hCG beta mAb	M94140	10-C25B	Very good pair for ELISA
hCG mAb	M1202082	10-3127	hCG mAb	M1202081	10-3126	Suitable pairing for Lateral Flow
hCG mAb	M1202081	10-3126	hCG mAb	M1202082	10-3127	Suitable pairing for ELISA
hCG pAb		20-CR25				110,000 tests per ml in 125I RIA
hCG protein		30-AC85				Crude, excellent for spiking controls and calibrator preparation
hCG protein		30R-AC048				>95% pure by SDS-PAGE analysis
Hexestrol-HRP		80-1180	Hexestrol pAb		20-1666	Excellent pair for ELISA
hGH mAb	M0410181	10-G05C	hGH mAb	M0410182	10-G05D	Suitable for EIA, immunoblotting
hGH mAb	M12619GH2	10-G119A	hGH mAb	M12619GH1	10-G119B	For use in sandwich immunoassay
hGH mAb	M83142	61-1053	hGH mAb	M83102	10-2386	Use for native/recombinant ELISA & Lateral Flow
hGH mAb	M83142	61-1053	hGH mAb	M83103	10-2387	Use for native/recombinant ELISA & Lateral Flow
hGH mAb	M83141	10-2388	hGH mAb	M83102	10-2386	Use for native/recombinant ELISA & Lateral Flow

■ Matched Pairs

* Can be used as capture and detection antibody

Capture Antibody/Antigen	Clone #	Catalog #	Detection Antibody	Clone #	Catalog #	Comments, Assay Type
hGH mAb	M83141	10-2388	hGH mAb	M83103	10-2387	Use for native/recombinant ELISA & Lateral Flow
hGH pAb		20-GR10				150,000 tests per ml by RIA
hGH protein		30-AH05				>98% by SDS-PAGE
hGH protein		30-AH06				>60% by SDS-PAGE
hGH protein		30R-AG020				E. Coli expressed, >98% Pure by SDS-PAGE
Lactoferrin mAb	M12619LC3	10-L100A	Lactoferrin mAb	M12619LC1	10-L100B	For use in sandwich immunoassay
Lactoferrin mAb	M12619LC3	10-L100A	Lactoferrin mAb	M12619LC2	10-L100C	For use in sandwich immunoassay
Leptin mAb	M72080	10-2297	Leptin mAb	M72081	10-2298	Can be used as a pair in ELISA & Luminex Assays
Leptin mAb	M18612LP1	10-7820	Leptin mAb	M18612LP2	10-7821	For use in sandwich immunoassay
Leptin mAb	M18612LP1	10-7820	Leptin mAb	M18612LP3	10-7822	For use in sandwich immunoassay
Leptin mAb	M81488	10-1757	Leptin mAb	M81396-B	61-1010	Excellent pair for use in ELISA. Also suitable for IHC
Leptin mAb	M83168	10-2401	Leptin mAb	M83123	10-2399	Use for native/recombinant ELISA & Lateral Flow
Leptin mAb	M83168	10-2401	Leptin mAb	M83124	10-2400	Use for native/recombinant ELISA & Lateral Flow
LH (intact) protein		30-AL25				>60% by SDS-PAGE analysis
LH alpha mAb	M1709LHa	10-1322	LH beta mAb	M1709LH	10-1321	Suitable for use in ELISA & Lateral Flow to detect LH
LH beta protein		30-AL35				> 98% by SDS-PAGE analysis
LH beta mAb	M94186	10-L15A	LH beta mAb	M31301	10-L05B	For use in ELISA & Lateral Flow
LH mAb	M21241	10-L05A	LH mAb	M21301	10-L05B	Very good pair for ELISA
LH mAb	M94186	10-L15A	LH mAb	M94187	10-L15B	Very good pair for ELISA
LH mAb	M83150	10-2405	LH mAb	M83106	10-2402	Use for native/recombinant ELISA & Lateral Flow
LH mAb	M83150	10-2405	LH mAb	M83107	10-2403	Use for native/recombinant ELISA & Lateral Flow
LH mAb	M83150	10-2405	LH mAb	M83108	10-2404	Use for native/recombinant ELISA & Lateral Flow
LH mAb	M83151	10-2406	LH mAb	M83106	10-2402	Use for native/recombinant ELISA & Lateral Flow
LH mAb	M83151	10-2406	LH mAb	M83107	10-2403	Use for native/recombinant ELISA & Lateral Flow
LH mAb	M83151	10-2406	LH mAb	M83108	10-2404	Use for native/recombinant ELISA & Lateral Flow
LH mAb (biotin)	M83152	61-1055	LH mAb	M83106	10-2402	Use for native/recombinant ELISA & Lateral Flow
LH mAb (biotin)	M83152	61-1055	LH mAb	M83107	10-2403	Use for native/recombinant ELISA & Lateral Flow
LH pAb		20-LG05				Highly specific for LH. Suitable for EIA and RIA
LH pAb		20-LR05				Low cross-reactivity with FSH, HCG, HCGb, and TSH
LH pAb		20-LR06				Multiple lots available, varying titers
Medroxyprogesterone acetate-HRP		80-1198	Medroxyprogesterone Acetate pAb		20-1680	Excellent pair for ELISA
Megestrol acetate-HRP		80-1200	Megestrol acetate pAb		20-1678	Excellent pair for ELISA
Megestrol-HRP		80-1199	Megestrol pAb		20-1658	Excellent pair for ELISA
Melengestrol-HRP		80-1201	Melengestrol pAb		20-1659	Excellent pair for ELISA
Methyltestosterone-HRP		80-1220	Methyltestosterone pAb		20-1656	For use in ELISA, WB, Dot Blot, IHC
Osteocalcin mAb	M186120S1	10-7939	Osteocalcin mAb	M186120S2	10-7940	Excellent pair for ELISA
Osteocalcin mAb	M83154	61-1056	Osteocalcin mAb	M83109	10-2408	Use for native/recombinant ELISA & Lateral Flow
Osteocalcin mAb	M83154	61-1056	Osteocalcin mAb	M83110	10-2409	Use for native/recombinant ELISA & Lateral Flow
Osteocalcin mAb	M83153	10-2410	Osteocalcin mAb	M83109	10-2408	Use for native/recombinant ELISA & Lateral Flow
Osteocalcin mAb	M83153	10-2410	Osteocalcin mAb	M83110	10-2409	Use for native/recombinant ELISA & Lateral Flow
Osteocalcin mAb	M186120S2	10-7940	Osteocalcin mAb	M86455	10-2593	
Placental Lactogen pAb		20-HR70				hPL 100%, hCG <0.1%, FSH <0.1%

■ Matched Pairs

* Can be used as capture and detection antibody

Capture Antibody/Antigen	Clone #	Catalog #	Detection Antibody	Clone #	Catalog #	Comments, Assay Type
Procalcitonin mAb	M18612PC1	10-7941	Procalcitonin mAb	M18612PC2	10-7942	For use in sandwich immunoassay
Procalcitonin mAb	M18612PC3	10-7943	Procalcitonin mAb	M18612PC4	10-7944	For use in sandwich immunoassay
Progesterone 11 mAb	M021809	10-P10D	Progesterone-HRP		65-IP28	Recommended for immunoassays
Progesterone 11 pAb		20-PR20				These antibodies are very sensitive and specific.
Progesterone-HRP		80-1254	Progesterone 11 pAb		20-1667	Excellent pair for ELISA
Progesterone-HRP		80-1255	Progesterone 4 pAb		20-1663	Excellent pair for ELISA
Prolactin mAb	M94194	10-P15C	Prolactin mAb	M94193	10-P15B	Very good pair for ELISA
Prolactin mAb	M83155	10-2414	Prolactin mAb	M83111	10-2412	Use for native/recombinant ELISA & Lateral Flow
Prolactin mAb	M83155	10-2414	Prolactin mAb	M83112	10-2413	Use for native/recombinant ELISA & Lateral Flow
Prolactin mAb	M83156	10-2415	Prolactin mAb	M83111	10-2412	Use for native/recombinant ELISA & Lateral Flow
Prolactin mAb	M83156	10-2415	Prolactin mAb	M83112	10-2413	Use for native/recombinant ELISA & Lateral Flow
Prolactin protein		30R-AP018				>98% pure by SDS-PAGE; E. coli expressed
PTH pAb		20-PG11				5,500 tests per ml by RIA C-terminal tracer, DAB
PTH pAb		20-PG01				Multiple Lots available, varying titers
PTH pAb		20-PR01				~20,000 tests per ml in RIA
PTH pAb		20-PG10				~12,000 tests/ml by RIA
PTH pAb		20-PR10				~20,000 tests/ml by RIA
PTH pAb		20-PG09				~7,000 tests/ml by RIA
PTH pAb		20-PR13				~20,000 tests/ml by RIA, high affinity for human & bovine PTH
PTH pAb		20-PG13				~15,000 tests/ml by RIA, highly specific for bovine & human PTH
PTH pAb		20-PR08				~20,000 tests per ml by RIA Mid-molecule tracer, DAB
SHBG protein		30-AS40				>98% pure by SDS-PAGE analysis
SHBG protein		30C-CP2020P				> 50% pure by SDS-PAGE analysis; Excellent for spiking controls
Nortestosterone pAb		20-NR55				~200,000 tests/ml in 125I RIA with 19-Nortestosterone-3 as tracer
Nortestosterone-HRP		80-1078	17a Nortestosterone pAb		20-1038	Excellent pair for ELISA
19 Nortestosterone-HRP		80-1090	19 Nortestosterone pAb		20-1060	For use in ELISA and other sandwich immunoassays
17b 19 Nortestosterone-HRP		80-1085	17b Nortestosterone pAb		20-1048	For use in ELISA and other sandwich immunoassays
Testosterone mAb	M021812	10-T07A	Testosterone-3-CMO-HRP		65-IT07	Suitable for ELISA
Testosterone-HRP		80-1294	Testosterone pAb		20-1672	Excellent pair for ELISA
17a Testosterone-HRP		80-1079	17a Testosterone pAb		20-1042	For use in ELISA and other sandwich immunoassays
17b Testosterone-HRP		80-1086	17b Testosterone pAb		20-1052	For use in ELISA and other sandwich immunoassays
17b Testosterone-HRP		80-1087	17b Testosterone pAb		20-1054	For use in ELISA and other sandwich immunoassays
17a Trenbolone-HRP		80-1080	17a Trenbolone pAb		20-1044	For use in ELISA and other sandwich immunoassays
17b Trenbolone-HRP		80-1088	17b Trenbolone pAb		20-1058	For use in ELISA and other sandwich immunoassays
17b Trenbolone-HRP		80-1089	17b Trenbolone pAb		20-1057	For use in ELISA and other sandwich immunoassays

■ Matched Pairs

* Can be used as capture and detection antibody

Capture Antibody/Antigen	Clone #	Catalog #	Detection Antibody	Clone #	Catalog #	Comments, Assay Type
Adenovirus mAb	M1121801	10-A02A	Adenovirus mAb	M8121121	10-A02F	Specific for Adenovirus. Suitable for IFA, IHC and ELISA
Adenovirus mAb	M1121801	10-A02A	Adenovirus mAb	M8121123	10-A02H	Specific for Adenovirus. Suitable for IFA, IHC and ELISA
Adenovirus mAb	M0111149	10-A02C	Adenovirus mAb	M0111148	10-A02D	Specific for the hexon group antigen of Adenovirus
Adenovirus mAb	M8121121	10-A02F	Adenovirus mAb	M1121801	10-A02A	Specific for hexon group of Adenovirus. Suitable for IFA & ELISA
Adenovirus mAb	M8121122	10-A02G	Adenovirus mAb	M8121121	10-A02F	Specific for hexon group of Adenovirus. Suitable for IFA & ELISA
Adenovirus mAb	M8121122	10-A02G	Adenovirus mAb	M8121123	10-A02H	Specific for hexon group of Adenovirus. Suitable for IFA & ELISA
* Adenovirus mAb	M1202102	10-3147	Adenovirus mAb	M1202102	10-3147	Can be used as both the membrane coating and conjugate antibody
Adenovirus mAb	M901221	10-A80A				Suitable for IFA, IHC and ELISA applications
Adenovirus pAb		20-AG02				Specific for purified Hexon
Adenovirus protein		30-AA02				ELISA grade antigen
B. anthracis mAb	M18612BA1	10-7841	B. anthracis mAb	M18612BA2	10-7842	Lethal Factor specific. Excellent pair for ELISA
B. anthracis mAb	M12619BA3	10-B107B	B. anthracis mAb	M12619BA4	10-B107A	Lethal Factor specific. Excellent pair for ELISA
B. anthracis mAb	M12619BA5	10-B108A	B. anthracis mAb	M12619BA6	10-B108B	Specific for spore. Excellent pair for ELISA
Brucella abortus mAb	M120502	10-1033	Brucella abortus mAb	M120501	10-1034	Excellent pair for ELISA
* Candida albicans pAb		20-CR04	Candida albicans pAb		20-CR04	Can be used as self-pair and as coating and detection antibody
Canine Distemper Virus mAb	M18612CD1	10-7850	Canine Distemper Virus mAb	M18612CD2	10-7851	Excellent pair for ELISA
Canine Heartworm mAb	M76279	10-1719	Canine Heartworm mAb	7116523	10C-CR1293M2	For use in ELISA and other sandwich immunoassays
C. botulinum A Toxoid mAb	M12619CA1	10-C130B	C. botulinum A Toxoid mAb	M12619CA2	10-C130A	Excellent pair for ELISA
C. botulinum B Toxoid mAb	M18612CB	10-7843	C. botulinum B Toxoid mAb	M12619CB	10-C131A	Excellent pair for ELISA
C. difficile Toxin A mAb	M57647	10-1273a	C. difficile Toxin A mAb	M57648	10-1272a	Excellent pair for ELISA
C. difficile Toxin A mAb	M59305	10-1493	C. difficile Toxin A mAb	M59304	10-1492	For use in ELISA and other sandwich immunoassays
C. difficile Toxin B mAb	M0511314	10-C67D	C. difficile Toxin B mAb	M0511311	10-C67A	For use in ELISA and other sandwich immunoassays
C. difficile Toxin B mAb	M12236	10-1274	C. Difficile Toxin B mAb	M12238	10-1276	Excellent pair for Lateral Flow
C. trachomatis mAb	M4020310	10-C13A	C. trachomatis mAb	M4020311	10-C13B	Suitable for lateral flow immunoassays
C. trachomatis mAb	M2103128	10-C13C	C. trachomatis pAb		20-CG21	Specific for purified elementary bodies. Suitable for ELISA & IFA
C. trachomatis mAb	M61872	10-1532	C. trachomatis mAb	M61871	10-1531	Suitable for ELISA and Lateral Flow
C. trachomatis mAb	M4091317	10-C13D				Detects trachomatis, psittaci & pneumoniae. Suitable for IFA/DFA
C. trachomatis pAb		20-CG20				Specific to the Major Outer Membrane Protein (MOMP)
C. trachomatis pAb		20-CR19				Reacts with C. trachomatis, C. psittacii and C. pneumoniae
C. trachomatis pAb		20-CG21				Specific to Elementary bodies of all strains of C. Trachomatis
C. trachomatis protein		30-AC37				Specific for C. trachomatis type F strain
CMV mAb	M4091309	10-C50L				Reactive against intermediate early antigen. Suitable for IFA/DFA
CMV mAb	M4091310	10-C50M				Reactive against intermediate early antigen. Suitable for IFA/DFA
CMV mAb	M4091311	10-C50N				Reactive against intermediate early antigen. Suitable for IFA/DFA
CMV pAb		20-CG70				Predominant reactivity to gB. Suitable for IFA, IHC & WB
Dengue NS1 mAb	M53232	10-1506	Dengue NS1 mAb	M53233	10-1507	Suitable for lateral flow immunoassays
Dengue NS1 mAb	M59467	10-1495	Dengue NS1 mAb	M59470	10-1498	For use in ELISA and Lateral Flow
Dengue NS1 mAb	M59467	10-1495	Dengue NS1 mAb	M59469	10-1497	For use in ELISA and Lateral Flow
Dengue NS1 mAb	M59467	10-1495	Dengue NS1 mAb	M59468	10-1496	For use in ELISA and Lateral Flow
Dengue NS1 mAb	M53233	10-1507	Dengue NS1 mAb	M12214	10-1250	Suitable pair for Lateral Flow

■ Matched Pairs

* Can be used as capture and detection antibody

Capture Antibody/Antigen	Clone #	Catalog #	Detection Antibody	Clone #	Catalog #	Comments, Assay Type
Dengue NS1 mAb (Subtype 1)	M86504	10-2678	Dengue NS1 mAb (Subtype 1)	M77296	10-1735	Suitable pair for Lateral Flow
Dengue NS1 (Subtype 3)		10-1729	Dengue NS1 (Subtype 2/3)		10-1730	Excellent pair for Lateral Flow
Dengue NS1 (Subtype 4)		10-1731	Dengue NS1 (Subtype 2/4)		10-1732	Excellent pair for Lateral Flow
Dengue NS1 (Subtype 1)	M86504	10-2678	Dengue NS1 (Subtype 1)	M86505	10-2679	For use in ELISA, Lateral Flow, WB
Dengue NS1 (Subtype 4)	M77292	10-1731	Dengue NS1 (Subtype 4)	M86508	10-2681	For use in ELISA, Lateral Flow, WB
Dengue NS1 (Subtype 4)	M77292	10-1731	Dengue NS1 (Subtype 4)	M86507	10-2680	For use in ELISA, Lateral Flow, WB
Dengue NS1 (Subtype 4)	M77292	10-1731	Dengue NS1 (Subtype 4)	M86618	10-2666	For use in ELISA and Lateral Flow
Dengue NS1 mAb	M86551	10-2698	Dengue NS1 mAb	M86552	10-2699	Suitable for use in sandwich immunoassays
Diphtheria toxin mAb	M12619DT1	10-D08C	Diphtheria toxin mAb	M99081025	10-D08B	For use in sandwich immunoassay
Ebola Virus NP protein		80-1411	Ebola Virus mAb	FE18	10-2254	Pair for ELISA. Suitable for Western blotting
Ebola Virus VP40 protein		30-1837	Ebola Virus VP40 mAb	M82957	10-2352	Pair for ELISA. Suitable for Western blotting
Ebola Virus VP40 protein		30-1837	Ebola Virus VP40 mAb	M82956	10-2351	Pair for ELISA. Suitable for Western blotting
E. coli 0157 mAb	M121024EC	10-1490	E. coli 0157 mAb (FITC)	M121024EC-F	61-1005	Matched pair for ELISA. Also use in IF, IHC, WB
E. coli 0157:H7 cell protein		30-AE13				Approximately 7.91×10^9 cfu/ml
E. coli pAb		20-ER13				Reactive with all O and K antigenic serotypes of E. Coli
FelV p27 mAb	M57890	10-1520	FelV p27 mAb	M57890	10-1520	Pairings for ELISA, IHC and Lateral Flow are user defined
FelV mAb	M510601	10-F05A				Recognizes all FelV isolates tested, suitable for ELISA
FelV pAb		20-FG32				Suitable for ELISA, IHC, flowcytometry and immunoblotting
FelV p27 protein	-	30-1928	FelV p27 mAb	M510603	10-F05C	For use in antigen-antibody capture assays
Feline FelV mAb	M72111	10-2328	Feline FelV mAb	M72112	10-2329	Excellent pair for Lateral Flow
*Giardia mAb	M72119	10-2336	Giardia mAb	M72119	10-2336	Use as a self matched antibody pair in Lateral Flow
G. lamblia mAb	M72407	10-1705	G. lamblia mAb	M72408	10-1711	For use in ELISA and IFA assays
G. lamblia mAb	M72409	10-1707	G. lamblia mAb	M72408	10-1711	For use in ELISA and IFA assays
G. lamblia mAb	M72409	10-1707	G. lamblia mAb	M72410	10-1708	For use in ELISA and IFA assays
Heartworm protein		30-AH03				In-vitro determination of Dirofilaria immitis in serum/plasma
Heat Stable Enterotoxin mAb	M120529	10-1013	Heat Stable Enterotoxin mAb	M120530	10-1014	Excellent pair for ELISA
Heat Stable Enterotoxin mAb	M120531	10-1015	Heat Stable Enterotoxin mAb	M120529	10-1013	Excellent pair for ELISA
Heat Stable Enterotoxin mAb	M120531	10-1015	Heat Stable Enterotoxin mAb	M120530	10-1014	Excellent pair for ELISA
Heat Labile Enterotoxin mAb	M120532	10-1016	Heat Labile Enterotoxin mAb	M120533	10-1017	Excellent pair for ELISA
Heat Labile Enterotoxin mAb	M120534	10-1018	Heat Labile Enterotoxin mAb	M120535	10-1019	Excellent pair for ELISA
H. pylori mAb	M6091321	10-H59C	H. pylori mAb	M402326	10-H59B	Suitable for Stool H. pylori antigen test
H. pylori mAb	M86495	10-2672	H. pylori mAb	M86496	10-2673	For use in ELISA and Lateral Flow
H. pylori pAb		20-HR76				This antibody is specific for whole cell lysate of H. Pylori
H. pylori protein		30-AH75				Soluble protein containing urease, CagA & Cytotoxin A antigens
H. pylori protein		30-AH77				Contains proteins associated with CagA & VacA genes & urease
H. pylori protein		30-AH78				Soluble protein containing urease, CagA & Cytotoxin A antigens
Hepatitis A Virus protein	M86545	30-1920	Hepatitis A Virus mAb	M86546	10-2693	Suitable for use in sandwich immunoassays

■ Matched Pairs

* Can be used as capture and detection antibody

Capture Antibody/Antigen	Clone #	Catalog #	Detection Antibody	Clone #	Catalog #	Comments, Assay Type
HBcAg mAb	M41058	10-H50B	HBcAg mAb	M41059	10-H50A	Specific for purified HBcAg
HBcAg mAb	M372914	10-H50C	HBcAg mAb	M372915	10-H50D	Recommended for ELISA
HBcAg protein		30-AH39				Reacts with HBcoreAg sera & human monoclonals in ELISA & WB
HBeAg mAb	M410513	10-H10D	HBeAg mAb	M410512	10-H10C	Suitable for ELISA
HBeAg mAb	M10071922	10-H10N	HBeAg mAb	M0071921	10-H10M	For use in ELISA and Lateral Flow
HBeAg mAb	M10071922	10-H10N	HBeAg mAb (HRP)	M10071922	61-H10K	For use in ELISA and Lateral Flow
HBsAg mAb	M701077	10-H05H	HBsAg pAb (Subtype ad/ay)		70-HG15S	For use in ELISA and Lateral Flow
HBeAg mAb	M0071921	10-H10M	HBeAg mAb (HRP)	M0071921	61-H10K	Suitable for ELISA
HBeAg mAb	M5022511	10-H10G	HBeAg mAb	M5022512	10-H10H	For use in sandwich immunoassay
HBeAg mAb	M502259	10-H10E	HBeAg mAb	M5022510	10-H10F	For use in sandwich immunoassay
HBsAg mAb	M1709HBs2	10-1324	HBsAg mAb	M1709HBs1	10-1323	Suitable for use in ELISA & Lateral Flow
HBsAg mAb	M18612HB1	10-7857	HBsAg mAb	M18612HB2	10-7858	For use in sandwich immunoassay
HBsAg mAb	M12619HB1	10-H114D	HBsAg mAb	M12619HB2	10-H114C	For use in sandwich immunoassay
HBsAg mAb	M1202085	10-3130	HBsAg mAb	M1202086	10-3131	Suitable pairing for Lateral Flow. Can also be used in ELISA
HBsAg mAb	M8121541	10-H05A	HBsAg mAb	M8121542	10-H05B	Specifically recognizes both HBsAg Ad and Ay subtypes
HBsAg mAb	M701079	10-H05G	HBsAg pAb		70-HG15S	Specific for all 4 subtypes of HBsAg; adr, adw, ayr and ayw
HBsAg mAb	M701077	10-H05H	HBsAg mAb	M701079	10-H05G	Specific for all 4 subtypes of HBsAg; adr, adw, ayr and ayw
HBsAg mAb	M0071923	10-H05K	Hepatitis B Virus mAb	M0071924	10-H05M	This pair is recommended for Lateral Flow
HBsAg mAb		70-1088	HBsAg mAb (biotin)	M86721	61-1066	Excellent pair for ELISA
HBsAg mAb	M0071925	10-H05J				Suitable for ELISA, IF, and WB
HBsAg pAb		20-HG20				Multiple lots available, varying titers
HBsAg pAb		20-HR20				Monospecific to Human HBsAg, ad/ay
HBsAg protein (Subtype ad)		30-AH15				>95% by SDS-PAGE
HBsAg protein (Subtype ad)		30-AH16				>99% Tested by HPLC
HBsAg protein (Subtype ay)		30-AH17				>99% Tested by HPLC
HBV preS1 mAb	M0071927	10-H07A				Suitable for ELISA
HBV preS1 mAb	M0071928	10-H07B				Suitable for ELISA
HBV preS1 mAb	M0071926	10-H08A				Suitable for ELISA
HCV mAb	M59885	10-1515	HCV mAb	M59887	10-1517	Suitable pair for ELISA, IF, and IHC
HCV mAb	M59886	10-1516	HCV mAb	M59887	10-1517	Suitable pair for ELISA, IF, and IHC
HCV protein		30-AH72	HCV protein (HRP)		65-IH20	This pair is recommended for ELISA
HCV protein		30-AH66	HCV protein		30-AH67 & 30-AH68	Suitable for lateral flow with 30-AH67 only or a mix of both as conjugate
HCV protein		30-AH66	HCV protein		30-AH95	Suitable for lateral flow, with 30-AH95 conjugated to gold
HCV protein (Core)		30-AH69				Recommended for Indirect ELISA
HCV NS3 protein		30-AH70				Recommended for Indirect ELISA
HCV protein		30-AH73				Recommended for Indirect ELISA
HCV protein		30-AH64				Recommended for Indirect or sandwich method
Hepatitis C Virus chimera		30-1849	Hepatitis C Virus chimera		30-1850	Use in Lateral Flow Double Antigen sandwich assay
HEV protein (HRP)		65-IH35				Suitable for ELISA and WB
HEV protein		30-AH29				Recommended for Indirect ELISA
HIV p24 mAb	M5101024	10-H30A	HIV p24 mAb	M106164	10-H30S	Excellent pair for ELISA
HIV p24 mAb	M106161	10-H30N	HIV p24 mAb	M106164	10-H30S	Excellent pair for ELISA
HPV11 E7 mAb	M18612HP1	10-7992	HPV11 E7 mAb	M18612HP2	10-7993	For use in sandwich immunoassay
HPV16 E7 mAb	M18612HP3	10-7986	HPV16 E7 mAb	M18612HP4	10-7987	For use in sandwich immunoassay

■ Matched Pairs

* Can be used as capture and detection antibody

Capture Antibody/Antigen	Clone #	Catalog #	Detection Antibody	Clone #	Catalog #	Comments, Assay Type
HPV16 E7 mAb	M18612HP5	10-7988	HPV16 E7 mAb	M18612HP6	10-7989	For use in sandwich immunoassay
HPV18 E7 mAb	M18612HP7	10-7990	HPV18 E7 mAb	M18612HP8	10-7991	For use in sandwich immunoassay
HRP2 mAb	M12220	10-1256	HRP2 mAb	M12220	10-1255	Suitable for use in Sandwich Immunoassay
HSV1 mAb	M4091312	10-H25F				Reacts with HSV1 MacIntyre F(1) & MP strains, suitable for IFA/DFA
HSV2 mAb	M690403	10-H45C				Reacts with glycoprotein C (gC-2) of HSV2 only, suitable for IFA
HSV2 mAb	M680910	10-H45E				Reacts with glycoprotein G (gG) of HSV2 only, suitable for IFA
HSV2 mAb	M4091315	10-H45H				Reactive against HSV2 MS and G strains, suitable for IFA & DFA
HSV2 mAb	M4091316	10-H45I				Reactive against HSV2 MS and G strains, suitable for IFA & DFA
HSV1 + HSV2 mAb	M4091313	10-H44H				Detects HSV1 MacIntyre, F & MP strains & HSV2 MS & G strains
HSV1 + HSV2 mAb	M4091314	10-H44I				Detects HSV1 MacIntyre, F & MP strains & HSV2 MS & G strains
HSV1 + HSV2 pAb		20-HR50				Specific for the ICP's and late structural (virion) antigens
HSV1 protein		30-AH20				MacIntyre strain produced in E6 cells
HSV1 protein		30-AH23				Strain G produced in E6 cells
HSV2 protein		30-AH22				Suitable for ELISA & WB
HSV2 protein		65-IH27				Suitable for Indirect ELISA & WB
IBDV mAb	M18612IB1	10-7844	IBDV mAb	M18612IB2	10-7845	Excellent pair for ELISA
IBDV mAb	M18612IB3	10-7846	IBDV mAb	M18612IB4	10-7847	Excellent pair for ELISA
*Influenza A mAb	M2110169	10-I50A	Influenza A mAb	M2110169	10-I50A	Recognizes nucleoprotein, suitable for IFA, IHC & ELISA
Influenza A mAb	M11742	10-I50Q	Influenza A mAb	M41181	10-I50N	Use in ELISA to detect nucleoprotein
Influenza A mAb	M11742	10-I50Q	Influenza A mAb	M11151	10-I50K	Use in ELISA to detect nucleoprotein
Influenza A mAb	M11742	10-I50Q	Influenza A mAb	M31171	10-I50M	Use in ELISA to detect nucleoprotein
Influenza A mAb	M11742	10-I50Q	Influenza A mAb	M51782	10-I50U	Use in ELISA to detect nucleoprotein
Influenza A mAb	M11742	10-I50Q	Influenza A mAb	M41772	10-I50T	Use in ELISA to detect nucleoprotein
Influenza A mAb	M2110169	10-I50A	Influenza A mAb	M8121722	10-I50H	Recognizes nucleoprotein, suitable for ELISA and IFA
Influenza A mAb	M8121722	10-I50H	Influenza A mAb	M8121721	10-I50G	Recognizes nucleoprotein, suitable for ELISA and IFA
Influenza A mAb	M8121722	10-I50H	Influenza A mAb	M8121723	10-I50I	Recognizes nucleoprotein, suitable for ELISA and IFA
Influenza A mAb	M31171	10-I50M	Influenza A mAb	M01732	10-I50P	Nucleoprotein specific, excellent for Latex Immunochromatography
Influenza A mAb	M41181	10-I50N	Influenza A mAb	M21161	10-I50L	Nucleoprotein specific, excellent for Gold Immunochromatography
Influenza A mAb	M51191	10-I500	Influenza A mAb	M01732	10-I50P	Nucleoprotein specific, excellent for Gold Immunochromatography
Influenza A mAb	M51191	10-I500	Influenza A mAb	M31171	10-I50M	Nucleoprotein specific, suitable pair for ELISA
Influenza A mAb	M51191	10-I500	Influenza A mAb	M41181	10-I50N	Nucleoprotein specific, suitable pair for ELISA
Influenza A mAb	M51191	10-I500	Influenza A mAb	M31762	10-I50S	Nucleoprotein specific, suitable pair for ELISA
Influenza A mAb	M18612IFA1	10-7866	Influenza A mAb	M18612IFA2	10-7867	Nucleoprotein specific, use in sandwich immunoassay
Influenza A mAb	M140612FA5	10-1100	Influenza A mAb	M140612FA2	10-1097	Nucleoprotein specific, for use in ELISA & WB
Influenza A mAb	M140612FA6	10-1101	Influenza A mAb	M140612FA2	10-1097	Nucleoprotein specific, for use in ELISA & WB
Influenza A mAb	M140612FA4	10-1099	Influenza A mAb	M140612FA2	10-1097	Nucleoprotein specific, for use in ELISA & WB
Influenza A mAb	M140612FA8	10-1103	Influenza A mAb	M140612FA7	10-1102	Nucleoprotein specific, suitable for Immunochromatography
Influenza A mAb	M18612IFA3	10-7839	Influenza A mAb	M18612IFA4	10-7840	Haemagglutinin H1 specific, use in sandwich immunoassay
Influenza A mAb	M18612IFA5	10-7854	Influenza A mAb	M18612IFA6	10-7855	Haemagglutinin H1 specific, use in sandwich immunoassay
Influenza A mAb	M18612IFA5	10-7854	Influenza A mAb	M18612IFA7	10-7856	Haemagglutinin H1 specific, use in sandwich immunoassay
Influenza A mAb	M322210	10-I50B				Recognizes the haemagglutinin of H1N1 serotype
Influenza A mAb	M322211	10-I50C				Recognizes the nucleoprotein
Influenza A mAb	M409012	10-I50D				Recognizes nucleoprotein, recommended for competitive ELISA
Influenza A mAb	M4090913	10-I50E				Recognizes nucleoprotein, recommended for competitive ELISA

■ Matched Pairs

* Can be used as capture and detection antibody

Capture Antibody/Antigen	Clone #	Catalog #	Detection Antibody	Clone #	Catalog #	Comments, Assay Type
Influenza A mAb	M4090914	10-I50F				Reactive against haemagglutinin of influenza A
Influenza A pAb		20-IG23				H1N1 specific. Excellent for IHC , IFA, WB
Influenza A pAb		20-IG24				H3N2 specific. Excellent for IHC , IFA, WB
Influenza A virus nucleoprotein antibody	M81542	10-1877 (biotin)	Influenza A virus nucleoprotein antibody	M81542-B	61-1038	Antibody pair to detect Influenza A virus nucleoprotein in sandwich immunoassays
Influenza A protein		30-AI50				Strain Texas 1/77 (H3N2)
*Influenza B mAb	M2110171	10-I55B	Influenza B mAb	M2110171	10-I55B	Recognizes nucleoprotein. Suitable for lateral flow
Influenza B mAb	M3072810	10-I55E	Influenza B mAb	M2110171	10-I55B	Recognizes nucleoprotein. Suitable for lateral flow
Influenza B mAb	M3072811	10-I55F	Influenza B mAb	M2110171	10-I55B	Recognizes nucleoprotein. Suitable for lateral flow
Influenza B mAb	M3072809	10-I55D	Influenza B mAb	M2110171	10-I55B	Recognizes nucleoprotein. Suitable for lateral flow
Influenza B mAb	M12212	10-I55Q	Influenza B mAb	M02202	10-I55P	Nucleoprotein specific, excellent pair for ELISA
Influenza B mAb	M62151	10-I55O	Influenza B mAb	M02202	10-I55P	Nucleoprotein specific, excellent pair for ELISA
Influenza B mAb	M42131	10-I55M	Influenza B mAb	M02202	10-I55P	Nucleoprotein specific, excellent pair for ELISA
Influenza B mAb	M42245	10-I55T	Influenza B mAb	M12212	10-I55Q	Nucleoprotein specific, excellent for Latex immunochromatography
Influenza B mAb	M12212	10-I55Q	Influenza B mAb	M42131	10-I55M	Nucleoprotein specific, excellent for Latex immunochromatography
Influenza B mAb	M42131	10-I55M	Influenza B mAb	M62151	10-I55O	Nucleoprotein specific, excellent for Gold Immunochromatography
Influenza B mAb	M42245	10-I55T	Influenza B mAb	M02202	10-I55P	Nucleoprotein specific, suitable pair for ELISA
Influenza B mAb	M12212	10-I55O	Influenza B mAb	M32143	10-I55S	Nucleoprotein specific, suitable pair for ELISA
Influenza B mAb	M12212	10-I55Q	Influenza B mAb	M42245	10-I55T	Nucleoprotein specific, suitable pair for ELISA
Influenza B mAb	M12212	10-I55Q	Influenza B mAb	M52246	10-I55U	Nucleoprotein specific, suitable pair for ELISA
Influenza B mAb	M12212	10-I55Q	Influenza B mAb	M32143	10-I55S	Nucleoprotein specific, suitable pair for ELISA
Influenza B mAb	M52246	10-I55U	Influenza B mAb	M42131	10-I55M	Nucleoprotein specific, suitable pair for ELISA
Influenza B mAb	M52246	10-I55U	Influenza B mAb	M02202	10-I55P	Nucleoprotein specific, suitable pair for ELISA
Influenza B mAb	M52246	10-I55U	Influenza B mAb	M12212	10-I55Q	Nucleoprotein specific, suitable pair for ELISA
Influenza B mAb	M18612IFB1	10-7862	Influenza B mAb	M18612IFB2	10-7863	Nucleoprotein specific, use in sandwich immunoassay
Influenza B mAb	M18612IFB3	10-7864	Influenza B mAb	M18612IFB4	10-7865	Nucleoprotein specific, use in sandwich immunoassay
Influenza B mAb	M140612FB3	10-1106	Influenza B mAb	M140612FB1	10-1104	Nucleoprotein specific, suitable pair for ELISA
Influenza B mAb	M140612FB5	10-1108	Influenza B mAb	M140612FB1	10-1104	Nucleoprotein specific, suitable pair for ELISA
Influenza B mAb	M140612FB6	10-1109	Influenza B mAb	M140612FB1	10-1104	Nucleoprotein specific, suitable pair for ELISA
Influenza B mAb	M140612FB7	10-1110	Influenza B mAb	M140612FB1	10-1104	Nucleoprotein specific, suitable pair for ELISA
Influenza B mAb	M140612FB3	10-1106	Influenza B mAb	M140612FB2	10-1105	Nucleoprotein specific, suitable pair for ELISA
Influenza B mAb	M140612FB5	10-1108	Influenza B mAb	M140612FB2	10-1105	Nucleoprotein specific, suitable pair for ELISA
Influenza B mAb	M140612FB7	10-1110	Influenza B mAb	M140612FB2	10-1105	Nucleoprotein specific, suitable pair for ELISA
Influenza B mAb	M140612FB8	10-1111	Influenza B mAb	M140612FB2	10-1105	Nucleoprotein specific, suitable for Immunochromatography
Influenza B mAb	M140612FB4	10-1107	Influenza B mAb	M140612FB3	10-1106	Nucleoprotein specific, suitable for Immunochromatography
Influenza B mAb	M4090916	10-I55G				Recognizes the nucleoprotein
Influenza B mAb	M4090915	10-I55H				Recognizes the nucleoprotein
Influenza B mAb	M42131	10-I55M	Influenza B mAb	M140612FB9	10-1112	Use 10-1112 conjugated to gold in immunochromatography
Influenza B mAb	M02202	10-I55P	Influenza B mAb	M140612FB9	10-1112	Use 10-1112 conjugated to gold in immunochromatography
Influenza B mAb	M32121	10-I55L	Influenza B mAb	M140612FB9	10-1112	Use 10-1112 conjugated to gold in immunochromatography
Influenza B mAb	M140612FB4	10-1107	Influenza B mAb	M140612FB3	10-1106	Use 10-1106 conjugated to gold in immunochromatography
Influenza B mAb	M140612FB8	10-1111	Influenza B mAb	M140612FB9	10-1112	Use 10-1112 conjugated to gold in immunochromatography
Influenza B pAb		20-IG29				Excellent when used in IHC, IFA and Immunoblotting
Influenza B protein		30-AI75				Strain Hong Kong 5/72

■ Matched Pairs

* Can be used as capture and detection antibody

Capture Antibody/Antigen	Clone #	Catalog #	Detection Antibody	Clone #	Catalog #	Comments, Assay Type
Influenza B virus nucleoprotein antibody	M81507	10-1857	Influenza A virus nucleoprotein antibody (biotin)	M81446-B	61-1033	Antibody pair to detect Influenza A virus nucleoprotein in sandwich immunoassays
L. pneumophila LPS mAb	M18612LG1	10-7870	L. pneumophila LPS mAb	M12619LP	10-L105A	For use in sandwich immunoassay
L. pneumophila LPS mAb	601129	10-L45B1	L. pneumophila LPS mAb	M99081031	10-L45D	Interchangeable pair (coating or capture) ELISA and IF
Listeria mAb	M12307	10-1479	Listeria mAb	M12308	10-1481	Excellent pair for Lateral Flow & ELISA
Listeria mAb	M12307	10-1479	Listeria mAb	M12309	10-1482	Excellent pair for Lateral Flow & ELISA
Listeria mAb	M18612LS1	10-7868	Listeria mAb	M18612LS2	10-7869	For use in sandwich immunoassay
Malaria HRP2 mAb	M81695	10-2252	Malaria HRP2 mAb	M81694	10-2251	Excellent pair for gold conjugated sandwich immunoassays
Malaria LDH mAb	M77288	10-1727	Malaria LDH pan mAb	M12300	10-1464	Excellent pair for Lateral Flow, ELISA
Malaria pan pLDH mAb	M86550	10-2697	Malaria pLDH mAb	M86547	10-2694	Suitable for use in sandwich immunoassays
Malaria pan pLDH mAb	M86550	10-2697	Malaria pLDH mAb	M86548	10-2695	Suitable for use in sandwich immunoassays
Malaria pLDH mAb	M86549	10-2696	Malaria pLDH mAb	M86548	10-2695	Suitable for use in sandwich immunoassays
Metapneumovirus mAb	M6060821	10-M35A				Suitable applications are ELISA & IFA
Metapneumovirus mAb	M6060822	10-M35B				Suitable applications are ELISA & IFA
M. tuberculosis pAb		20-MR50				Reacts with a minimum of 2 major M. tuberculosis bands by IEP
M. tuberculosis protein		30-AM66				Suitable as capture antigen in immunochromatography & ELISA
M. tuberculosis protein		30-AM67				Suitable as capture antigen in immunochromatography & ELISA
M. tuberculosis 63 kDa protein		30-AM73				Suitable applications include ELISA & WB
Mycoplasma pneumoniae mAb	M9010922	10-M40E				Reacts with a >200 kDa antigen, suitable for ELISA, IFA & WB
Mycoplasma pneumoniae mAb	M9010923	10-M40F				Reactive with multiple bands, suitable for ELISA, IFA & WB
Mycoplasma pneumoniae pAb		20-MR54				Specific for Mycoplasma pneumoniae whole organism
Mycoplasma pneumoniae protein		30-AM40				Mycoplasma pneumoniae strain FH
Neisseria gonorrhoeae mAb	M1709NG2	10-1330	Neisseria gonorrhoeae	M1709NG1	10-1329	mAb Suitable for use in ELISA & Lateral Flow
Newcastle disease virus mAb	M18612NW1	10-7871	Newcastle disease virus mAb	M18612NW2	10-7872	For use in sandwich immunoassay
Newcastle disease virus mAb	M18612NW3	10-7873	Newcastle disease virus mAb	M18612NW4	10-7874	For use in sandwich immunoassay
Norovirus mAb	M080501	10-N55A	Norovirus mAb	M080502	10-N55B	Specific for capsid protein, suitable for ELISA detection in stool
Norovirus G1 mAb	M59879	10-1510	Norovirus G1 mAb	M59880	10-1511	Suitable for Lateral Flow & ELISA. Serotype G1 specific
Norovirus G2 mAb	M59882	10-1513	Norovirus G2 mAb	M59881	10-1512	Suitable for Lateral Flow & ELISA. Serotype G2 specific
Norovirus G2 mAb	M86724	10-2736	Norovirus G2 mAb	M86723	10-2735	Suitable pairing for Lateral Flow assays
Norovirus G2 mAb	M86724	10-2736	Norovirus G2 mAb	M59882	10-1513	Suitable pairing for ELISA assays
Norovirus VP1 mAb	M120539	10-1023	Norovirus VP1 mAb	M120540	10-1024	Excellent pair for ELISA
Parainfluenza type 1 mAb	M03022809	10-P43B	Parainfluenza type 1 + 3 mAb	M03022810	10-P43C	Specific for fusion protein, suitable for ELISA & IFA
Parainfluenza type 1 mAb	M4090917	10-P43D				Reactive against Sendai/52, (HA-2) C35, Sendai/Cantell in IF
Parainfluenza type 1 pAb		20-PG89				Suitable for IFA applications
Parainfluenza type 1 protein		30-AP43				VP1 strain
Parainfluenza type 2 mAb	M2110190	10-P53A				Recommended for competitive ELISA
Parainfluenza type 2 mAb	M4090918	10-P53B				Reactive against the Greer (CA virus) strain. Suitable for IFA
Parainfluenza type 3 pAb		20-PG90				Suitable for IFA applications
Parainfluenza type 2 protein		30-AP53				Greer strain
Parainfluenza type 3 mAb	M02120321	10-P63A	Parainfluenza type	M0301307	10-P63B	Specific for hemagglutinin of Para 3, suitable for ELISA & IFA

Matched Pairs

* Can be used as capture and detection antibody

Capture Antibody/Antigen	Clone #	Catalog #	Detection Antibody	Clone #	Catalog #	Comments, Assay Type
3 mAb						
Parainfluenza type 3 mAb	M4090919	10-P63C				Reactive against (HA-1) C243 strain, suitable for IFA
Parainfluenza 3 protein	30-AP63					Reactive against (HA-1) C243 strain
Parvovirus mAb	M18612PV1 1	0-7875	Parvovirus mAb	M18612PV2	10-7876	For use in sandwich immunoassay
PBP2a mAb	M8121521	10-P08A	PBP2a mAb	M8121522	10-P08B	Specific for PBP2a of Methicillin-resistant <i>S. aureus</i>
PBP2a mAb	M86612	10-2659	PBP2a mAb	M86611	10-2658	Suitable pair for ELISA
Pf HRP2 mAb	M0071929	10-P09G	PfHRP2 mAb	M0071933	10-P09J	Suitable pairing for Lateral Flow and ELISA
Pf HRP2 mAb	M0071933	10-P09J				Suitable pairing for Lateral Flow. Can also be used in ELISA
Pf HRP2 mAb	M0071930	10-P09H				
Pf HRP2 mAb	M0071929	10-P09G	PfHRP2 mAb	M0071930	10-P09H	Suitable pairing for Lateral Flow and ELISA
Pf HRP2 mAb	M1709Pf1	10-1331	PfHRP2 mAb	M1709Pf1	10-1332	Specific pair for Pf HRP in ELISA and Lateral Flow
PfLDH mAb	M1209062	10-P09DS	Pan LDH mAb	M1209061	10-P09CS	Lateral/Gold Conjugation
PfLDH mAb	M901026	10-P09D				Specific for <i>P. falciparum</i> lactate dehydrogenase in ELISA
PfLDH mAb	M901027	10-P09E				Specific for <i>P. vivax</i> lactate dehydrogenase
Plasmodium vivax mAb	M1709Pv2	10-1334	Plasmodium vivax mAb	M1709Pv1	10-1333	Suitable for use in ELISA & Lateral Flow
Pan LDH mAb	M120933	10-P09E1	Pan LDH mAb	M1209061	10-P09CS	Lateral/Gold Conjugation
Pan LDH mAb	M1709Lp2	10-1336	Pan LDH mAb	M1709Lp1	10-1335	Suitable for use in ELISA & Lateral Flow
Pan LDH mAb	M1209063	10-P09I	Pan LDH mAb	M1209061	10-P09CS	Lateral/Gold Conjugation
Rabies protein	30-AR35					Recombinant Phosphoprotein expressed in <i>E. coli</i>
*RSV mAb	M1121802	10-R25C	RSV mAb	M1121802	10-R25C	Fusion protein, suitable for ELISA & IFA
RSV mAb	M1121802	10-R25C	RSV mAb	M05091321	10-R25J	Fusion protein, suitable for ELISA & IFA
RSV mAb	M1121802	10-R25C	RSV mAb	M03031121	10-R25E	Fusion protein, suitable for ELISA & IFA
RSV mAb	M291207	10-R25B				Nucleoprotein, suitable for a competitive ELISA
RSV mAb	M4090920 1	0-R25G				Suitable for ELISA
RSV mAb	M4090921	10-R25H				Fusion protein, suitable for ELISA & IFA
RSV mAb	M8122029	10-R25K				Fusion protein, Neutralizing antibody, suitable for ELISA & IFA
RSV pAb	20-RG45					Immunogen-Human RSV isolate
RSV protein	30-AR24					MA 104 cells, Long Strain
RSV protein	30-AR25					Long Strain
Rotavirus mAb	M74251	10-R30C	Rotavirus mAb	M74252	10-R30D	Reactive with intact strains RRV, WA & bovine, suitable for ELISA
Rotavirus mAb	M74251	10-R30C	Rotavirus mAb	M74253	10-R30E	Reactive with intact strains RRV, WA & bovine, suitable for ELISA
*Rotavirus mAb	M1202101	10-3146	Rotavirus mAb	M1202101	10-3146	Can be used as both the membrane coating and conjugate antibody
Rotavirus mAb	M29301	10-R30A				Specific for human, monkey and porcine p41 in ELISA & WB
Rotavirus VP6 mAb	M120536	10-1020	Rotavirus VP6 mAb	M120538	10-1022	Excellent pair for ELISA
Rotavirus VP6 mAb	M120537	10-1021	Rotavirus VP6 mAb	M120538	10-1022	Excellent pair for ELISA
Rotavirus pAb	20-RG50					Specific for ICP's and late structural (virions) antigens
Salmonella mAb (LPS core)	M9011221	10-S05F	Salmonella mAb	M9011224	10-S05I	Reacts with O- A/B/C1/C2/D/E1/E3/E4/F/G1/G2 in ELISA & IFA
			(LPS core)			
Salmonella mAb (LPS core)	M9011222	10-S05G	Salmonella mAb	M9011223	10-S05H	Reacts with O- A/B/C1/C2/D/E1/E3/E4/F/G1/G2 in ELISA & IFA
			(LPS core)			
Salmonella mAb (LPS core)	M9011222	10-S05G	Salmonella mAb	M9011224	10-S05I	Reacts with O- A/B/C1/C2/D/E1/E3/E4/F/G1/G2 in ELISA & IFA
			(LPS core)			
Salmonella pAb	20-SR11					Specific to a broad range of Salmonella O & H strains

■ Matched Pairs

* Can be used as capture and detection antibody

Capture Antibody/Antigen	Clone #	Catalog #	Detection Antibody	Clone #	Catalog #	Comments, Assay Type
S. enterotoxin Type A mAb	M18612EA1	10-7831	S. enterotoxin Type A mAb	M18612EA2	10-7832	For use in sandwich immunoassay
S. enterotoxin Type A mAb	M18612EA3	10-7833	S. enterotoxin Type A mAb	M18612EA2	10-7832	For use in sandwich immunoassay
S. enterotoxin Type B mAb	M18612EB1	10-7825	S. enterotoxin Type b mAb	M18612EB2	10-7826	Excellent pair for ELISA
S. enterotoxin Type D mAb	M120521	10-1005	S. enterotoxin Type D mAb	M120522	10-1006	Excellent pair for ELISA
S. enterotoxin Type D mAb	M120523	10-1007	S. enterotoxin Type D mAb	M120524	10-1008	Excellent pair for ELISA
S. enterotoxin Type E mAb	M120525	10-1009	S. enterotoxin Type E mAb	M120526	10-1010	Excellent pair for ELISA
S. enterotoxin Type E mAb	M120527	10-1011	S. enterotoxin Type E mAb	M120528	10-1012	Excellent pair for ELISA
S. enterotoxin Type E mAb	M120526	10-1010	S. enterotoxin Type E mAb	M120528	10-1012	Excellent pair for ELISA
S. enterotoxin Type G mAb	M18612EG1	10-7829	S. enterotoxin Type G mAb	M18612EG2	10-7830	For use in sandwich immunoassay
S. enterotoxin Type I mAb	M18612EI2	10-7828	S. enterotoxin Type I mAb	M18612EI1	10-7827	For use in sandwich immunoassay
Streptococcus Group A pAb		20-SG05				Bulk quantities available
Streptococcus Group A pAb assays		70-XG70				Affinity purified, suitable for lateral flow & gold conjugation
Streptococcus Group A pAb		70-XR85				Affinity purified against the whole organism
Streptococcus Group A pAb		70-XR70				Suitable for membrane & coated tube enzyme immunoassays
Streptococcus Group A pAb		70-XR73	Streptococcus Group A pAb		70-XR83	Suitable for membrane & coated tube enzyme
Streptococcus Group A protein		30-AS83				Lancefield's Group A strain
Streptococcus Group B protein		30-AS86				Lancefield's Group B strain
Streptococcus pneumoniae mAb	M103311	10-S27C	Streptococcus pneumoniae mAb	M72619	10-S27F	For use in ELISA and IFA assays
Treponema pallidum pAb		20-TR89				Suitable for EIA, IHC & WB
p15, p17, p47 Treponema pallidum protein		30-AT70	p47 Treponema pallidum protein (HRP)		65-IT67	Suitable for ELISA development
p17 Treponema pallidum protein		30-AT72	p17 Treponema pallidum protein (HRP)		65-IT66	Suitable for ELISA development
p15 Treponema pallidum protein		30-AT75	p15 Treponema pallidum protein (HRP)		65-IT65	Suitable for ELISA development
p15, p17, p47 Treponema pallidum protein		30-AT70	p15 Treponema pallidum protein (HRP)		65-IT65, 65-IT66 & 65-IT67	Three detection antigen preps to be utilized as reporter in ELISA
p15, p17, p47 Treponema pallidum protein		30-AT76	p15, p17, p47 Treponema pallidum protein (Gold Colloid)		64-IT77	Suitable for lateral flow assay
Treponema pallidum TmpA protein		30R-AT068				> 95% pure, suitable for ELISA, WB, Dot Blot & Lateral Flow
Treponema pallidum TmpA protein		30R-AT032				> 95% pure, B-galactosidase (114kDa) fused at the (beta Galactosidase Fusion) N-terminus
Treponema pallidum p15 protein		30-AT67				Affinity purified, detects 15 kDa band in SDS PAGE
Treponema pallidum p15 protein		30R-AT065				> 95% pure by SDS-PAGE, suitable for ELISA and WB
Treponema pallidum p17 protein		30-AT74				>95% by SDS-PAGE, suitable for immunodiagnostic assays
Treponema pallidum p17 protein		30R-AT066				> 90% pure by 10% SDS-PAGE analysis, suitable for ELISA & WB
Treponema pallidum p17 protein (beta Galactosidase Fusion)		30R-AT030				> 95% pure, B-galactosidase (114kDa) fused at the N-terminus
Treponema pallidum p47 protein		30R-AT067				> 90% pure by SDS-PAGE, suitable for ELISA and WB
Treponema pallidum p47 protein		30R-AT031				> 95% pure, B-galactosidase (114kDa) fused at the (beta Galactosidase Fusion) N-terminus
Trichomonas vaginalis mAb	M1011401	10-T71E	Trichomonas vaginalis mAb	M1011403	10-T71G	Matched pair for sandwich ELISA. Also function in indirect FA

■ Matched Pairs

* Can be used as capture and detection antibody

Capture Antibody/Antigen	Clone #	Catalog #	Detection Antibody	Clone #	Catalog #	Comments, Assay Type
Tuberculosis CFP10 mAb	M18612TB1	10-7852	Tuberculosis CFP10 mAb	M18612TB2	10-7853	Excellent pair for ELISA
Vaccinia Virus mAb	M61671	10-1522	Vaccinia Virus mAb	M61672	10-1523	Suitable for ELISA and Lateral Flow
Yersinia pestis V Antigen mAb	M12619YV1	10-Y101B Antigen mAb	Yersinia pestis V	M12619YV2	10-Y102A	For use in sandwich immunoassay
Zika virus envelope protein		30-1932	Zika virus envelope mAb	M86645	10-2712	For use in ELISA and Lateral Flow
Zika virus envelope protein		30-1932	Zika virus envelope mAb	M86646	10-2713	For use in ELISA and Lateral Flow
Zika virus envelope protein		30-1932	Zika virus envelope mAb	M86647	10-2714	For use in ELISA and Lateral Flow
Zika virus envelope protein		30-1932	Zika virus envelope mAb	M86648	10-2715	For use in ELISA and Lateral Flow
Zika virus NS1 protein		30-1931	Zika virus NS1 mAb	M86641	10-2708	For use in ELISA and Lateral Flow
Zika virus NS1 protein		30-1931	Zika virus NS1 mAb	M86642	10-2709	For use in ELISA and Lateral Flow
Zika virus NS1 protein		30-1931	Zika virus NS1 mAb	M86643	10-2710	For use in ELISA and Lateral Flow
Zika virus NS1 protein		30-1931	Zika virus NS1 mAb	M86644	10-2711	For use in ELISA and Lateral Flow
Zika virus NS1 protein		30-1931	Zika virus NS1 mAb	M86640	10-2707	For use in ELISA and Lateral Flow

■ Matched Pairs

* Can be used as capture and detection antibody

Capture Antibody/Antigen	Clone #	Catalog #	Detection Antibody	Clone #	Catalog #	Comments, Assay Type
Aggrecan mAb	M83158	10-2362	Aggrecan mAb	M83114	10-2360	Use for native/recombinant ELISA & Lateral Flow
Aggrecan mAb	M83158	10-2362	Aggrecan mAb	M83115	10-2361	Use for native/recombinant ELISA & Lateral Flow
Aggrecan mAb	M83158	10-2362	Aggrecan mAb	M83113	61-1049	Use for native/recombinant ELISA & Lateral Flow
Aggrecan mAb	M83159	10-2363	Aggrecan mAb	M83114	10-2360	Use for native/recombinant ELISA & Lateral Flow
Aggrecan mAb	M83159	10-2363	Aggrecan mAb	M83115	10-2361	Use for native/recombinant ELISA & Lateral Flow
Aggrecan mAb	M83159	10-2363	Aggrecan mAb	M83113	61-1049	Use for native/recombinant ELISA & Lateral Flow
alpha 2 Antiplasmin mAb	M59756	10-1502	alpha 2 Antiplasmin mAb	M59757	10-1503	Excellent pair for ELISA
Angiopoietin 2 mAb	M72047	10-2264	Angiopoietin 2 mAb	M72048	10-2265	Excellent pair for ELISA
Avidin mAb	M18612AV1	10-7975	Avidin mAb	M18612EG3	10-7977	For use in sandwich immunoassay
Avidin mAb	M18612AV2	10-7976	Avidin mAb	M18612EG3	10-7977	For use in sandwich immunoassay
cAMP-HRP		80-1134	cAMP pAb		20-1374	Excellent pair for ELISA
CD40L mAb	M18612CL1	10-7888	CD40L mAb	M18612CL2	10-7889	For use in sandwich immunoassay
CD40L mAb	M18612CL2	10-7889	CD40L mAb	M18612L3	10-7890	For use in sandwich immunoassay
CXCL9 pAb (Biotin)		60-5000	CXCL9 mAb	M62854	10-1536	For use in sandwich immunoassay
CXCL9 pAb		70-1028	CXCL9 mAb	M62854	10-1536	For use in sandwich immunoassay
Eotaxin mAb	M72065	10-2282	Eotaxin mAb	M72064	10-2281	Excellent pair for ELISA
Ferritin mAb	M18612FR1	10-7906	Ferritin mAb	M18612FR2	10-7907	For use in sandwich immunoassay
Fibrinogen mAb	M12619FB1	10-F107B	Fibrinogen mAb	M12619FB2	10-F107C	For use in sandwich immunoassay
Fibrinogen mAb	M18612FB	10-7903	Fibrinogen mAb	M12619FB1	10-F107B	For use in ELISA and other sandwich immunoassays
Ficolin H antibody	M81614	10-1949	Ficolin H antibody (biotin)	M81614-B	61-1045	Excellent antibody to detect Ficolin H in sandwich immunoassays
GAPDH mAb	M59755	10-1501	GAPDH mAb	M59754	10-1500	For use in sandwich immunoassay
gamma ENaC mAb	M83189	10-2451	gamma ENaC mAb (biotin)	M83190	61-1057	For use in ELISA and other sandwich immunoassays
HSA mAb	M12619HS1	10-A120B	HSA mAb	M12619HS3	10-A120A	For use in sandwich immunoassay
HSA mAb	M12619HS1	10-A120B	HSA mAb	M12619HS2	10-A120D	For use in sandwich immunoassay
IFN alpha mAb	M18612IN1	10-7925	IFN alpha mAb	M18612IN2	10-7926	For use in sandwich immunoassay
IFN beta mAb	M18612IN3	10-7914	IFN beta mAb	M18612IN4	10-7915	For use in sandwich immunoassay
IFN beta mAb	M18612IN5	10-7916	IFN beta mAb	M18612IN6	10-7917	For use in sandwich immunoassay
IFN gamma mAb	M18612IN7	10-7923	IFN gamma mAb	M18612IN8	10-7924	For use in sandwich immunoassay
IFN gamma mAb	NIB42	10R-1101c	IFN gamma mAb	M912269	10R-1101b	For use in sandwich immunoassay
IGFBP1 mAb	M18612IG1	10-7918	IGFBP1 mAb	M18612IG2	10-7919	Excellent pair for ELISA
IGFBP3 mAb	M83147	10-2395	IGFBP3 mAb	M83104	10-2394	Use for native/recombinant ELISA & Lateral Flow
IGFBP3 mAb	M83104	10-2394	IGFBP3 mAb	M83147	10-2395	Use for native/recombinant ELISA & Lateral Flow
IGFBP4 mAb	M18612IG3	10-7920	IGFBP4 mAb	M18612IG4	10-7921	For use in sandwich immunoassay
IGFBP4 mAb	M18612IG4	10-7921	IGFBP4 mAb	M18612IG5	10-7922	For use in sandwich immunoassay
IL1RL1 mAb	M76263	10R-10254	IL1RL1 pAb		20R-3014	For use in sandwich immunoassays
IL2 mAb	M18612IL2-1	10-7930	IL2 mAb	M18612IL2-2	10-7931	Excellent pair for ELISA
IL22 pAb		70R-IR042	IL22 pAb (biotin)		60R-IR042BT	For use in ELISA and other sandwich immunoassays
IL3 mAb	M313121	10-I63A	IL3 mAb	M313122	10-I63B	For use in sandwich immunoassay
IL3 mAb	M313122	10-7928	IL3 mAb	M313122	10-I63B	For use in sandwich immunoassay
IL6 mAb	M53914	10-1508S	IL6 mAb (HRP)	M53915	61-1001S	For use in ELISA and other sandwich immunoassays
Human IgA mAb	M18612A1	10-7808	Human IgA mAb	M411201	10-I05A	Excellent pair for ELISA
Human IgE mAb	M12619E1	10-I104C	Human IgE mAb	M12619E2	10-I104B	Excellent pair for ELISA

■ Matched Pairs * Can be used as capture and detection antibody

Capture Antibody/Antigen	Clone #	Catalog #	Detection Antibody	Clone #	Catalog #	Comments, Assay Type
*Human IgG mAb	M1202105	10-3150	Human IgG mAb	M1202105	10-3150	Can be used as both the membrane coating and conjugate antibody
*Human IgG4 mAb	M12619G4	10-I129A	Human IgG4 mAb	M12619G4	10-I129A	Use as coating or for detection of total IgG4 level in ELISA
*Human IgM mAb	M1202104	10-3149	Human IgM mAb	M1202104	10-3149	Can be used as both the membrane coating and conjugate antibody
*Human Kappa Light Chain mAb	M18612K1	10-7812	Human Kappa Light Chain mAb	M18612K1	10-7812	Use as coating or for detection of Bence Jones proteins in ELISA
*Human Kappa Light Chain mAb	M12619KL	10-K100A	Human Kappa Light Chain mAb	M12619KL	10-K100A	Use as coating or for detection of kappa-chains or kappa-Ig
*Human Lambda Light Chain mAb	M18612L2	10-7814	Human Lambda Light Chain mAb	M18612L2	10-7814	Can be used as coating or detection in ELISA
MIP1 alpha mAb	M6110647	10-M11A	MIP1 alpha pAb (biotin)		60R-MG001bt	For use in ELISA and other sandwich immunoassays
Neutrophil Elastase mAb	M72088	10-2305	Neutrophil Elastase mAb	M72089	10-2306	Excellent pair for ELISA
Properdin antibody	M81392	10-1827	Properdin antibody (biotin)	M81392-B	61-1032	Excellent antibody pair to detect Properdin in sandwich immunoassays
Renin mAb	M83161	10-2421	Renin mAb	M83118	10-2420	Use for native/recombinant ELISA & Lateral Flow
Renin mAb	M83163	10-2423	Renin mAb	M83118	10-2420	Use for native/recombinant ELISA & Lateral Flow
Secretory component mAb	M61693	10-1529	Secretory component mAb	M18612SC2	10-7899	For use in sandwich immunoassay
Tetranectin antibody	M81567	10-1864	Tetranectin antibody	M81537	10-1862	Antibody pair specific for amino acids 17-181 of human tetranectin monomer
Transferrin mAb	M10021522	10-T34D	Transferrin mAb	M10021523	10-T34E	For use in sandwich immunoassay
Transferrin mAb	M10021521	10-T34C	Transferrin mAb	M12619TF1	10-T118A	For use in sandwich immunoassay
Transferrin Receptor mAb	M02061321	10-T66C	Transferrin Receptor mAb	M02061322	10-T66D	For use in ELISA and other sandwich immunoassays
Transferrin Receptor mAb	M12619TR2	10-T119C	Transferrin Receptor mAb	M12619TR1	10-T119A	For use in sandwich immunoassay
Vitamin D Binding Protein mAb	M81443	10-1903	Vitamin D Binding mAb (biotin)	M81485-B Protein	61-1042	Antibody pair to detect human VDBP in sandwich immunoassays
Vitamin D Binding Protein mAb	M81443	10-1903	Vitamin D Binding Protein mAb (biotin)	M81546-B	61-1043	For use in sandwich immunoassays

■ Matched Pairs

* Can be used as capture and detection antibody

Capture Antibody/Antigen	Clone #	Catalog #	Detection Antibody	Clone #	Catalog #	Comments, Assay Type
Thyroglobulin mAb	M18612TG1	10-7834	Thyroglobulin mAb	M18612TG2	10-7835	For use in sandwich immunoassay
Thyroglobulin mAb	M370107	10-T45A	Thyroglobulin mAb	M370108	10-T45B	Suitable for ELISA
Thyroglobulin protein		30-AT01				>99% pure by SDS PAGE
Thyroglobulin protein		30-AT02				>98% pure by SDS-PAGE
Thyroid Peroxidase mAb	M18612TP1	10-7971	Thyroid Peroxidase mAb	M18612TP3	10-7973	For use in sandwich immunoassay
Thyroid Peroxidase mAb	M18612TP2	10-7972	Thyroid Peroxidase mAb	M18612TP3	10-7973	For use in sandwich immunoassay
Thyroid Peroxidase protein		30-AT41				Source- human thyroid, 98% by SDS-PAGE
Thyroid Peroxidase protein		30-AT61				Source- Baculovirus in sf9 cells, >96% by SDS PAGE
Thyroxine mAb	M94207	10-T30B				Suitable for competitive free T4 assay
Thyroxine mAb	702431	10C-CR1053M2				Less than 1% cross reactivity was observed with T3, T2 and rT3
Thyroxine mAb	M94208	10-T30C				Suitable for ELISA
Thyroxine pAb		20-TR40				Multiple lots available, varying titers. Can be used in solid phase
Thyroxine pAb		20-TS40				85,000 tests per ml in I125 RIA. Multiple lots of varying titers
Thyroxine protein (BSA)		80-IT50				Immunogen quality
TSH mAb	M12619TSH	10-T111A	TSH mAb	M18612TSH1	10-7836	For use in two-site enzyme immunoassay
TSH beta mAb	M94206	10-T25C	TSH beta mAb	M94205	10-T25B	Suitable for ELISA
TSH (intact) pAb		70-1014	TSH beta pAb		70-1015	Matched pair for immunoassays
TSH mAb		10-2428	TSH mAb	M83122	10-2427	Suitable for ELISA and Lateral Flow assays
TSH mAb		10-2428	TSH mAb	M83121	10-2426	Suitable for ELISA and Lateral Flow assays
TSH mAb	M83165	10-2429	TSH mAb	M83122	10-2427	Matched pair for immunoassays
TSH mAb	M83166	10-2430	TSH mAb	M83121	10-2426	Matched pair for immunoassays
TSH mAb	M83166	10-2430	TSH mAb	M83122	10-2427	Matched pair for immunoassays
TSH mAb	M83167	10-2431	TSH mAb	M83122	10-2427	Matched pair for immunoassays
TSH pAb		20-TG25				Multiple lots available, varying titers
TSH pAb		20-TR25				>100,000 tests/ml in RIA DAB assay system
Transthyretin mAb	10E1	10R-8457	Transthyretin mAb	9G6	10R-8510	Excellent pair for sandwich ELISA
Triiodothyronine mAb	M94210	10-T35A				Recommended for competitive ELISA
Triiodothyronine pAb		20-TG45				Multiple lots available, varying titers
Triiodothyronine pAb		20-TR45				Multiple lots available, varying titers
Triiodothyronine pAb		20-TS45				100,000 test per ml by RIA
Triiodothyronine protein (BSA)		80-IT30				Immunogen quality

■ Matched Pairs

* Can be used as capture and detection antibody

Capture Antibody/Antigen	Clone #	Catalog #	Detection Antibody	Clone #	Catalog #	Comments, Assay Type
alpha 1 Acid Glycoprotein pAb		20-OG20				Human Alpha-1 Acid Glycoprotein only. Monospecific in IEP
AFP mAb	M1709AFP2	10-1391	AFP mAb	M1709AFP1	10-1390	Suitable for use in ELISA & Lateral Flow
AFP mAb	M1202096	10-3141	AFP mAb	M1202095	10-3140	Suitable pairing for Lateral Flow. Can also be used in ELISA
AFP mAb	2127435	10C-CR1007M4	AFP mAb	6127435	10C-CR1007M5	Good pair for lateral flow & ELISA
AFP mAb	M19301	10-A05B	AFP pAb		70-XG05	Good pair for ELISA
AFP mAb	M12619AF1	10-A100A	AFP mAb	M12619AF2	10-A100B	For use in sandwich immunoassay
AFP mAb	M83128	10-2357	AFP mAb	M83090	10-2457	10-2 Use for native/recombinant ELISA & Lateral Flow
AFP mAb	M83129	61-1048	AFP mAb	M83090	10-2457	10-2 Use for native/recombinant ELISA & Lateral Flow
AFP pAb		20-AG10				Purified human cord serum was used as the immunogen
AFP pAb		20-AR10				100,000 tests/ml by 125I RIA ED50 = 55ng/ml @ 30% B/TC
AFP protein		30-AA10				Prepared from Human cord serum
AFP protein		30-AA05				Prepared from Human cord serum
beta 2 Microglobulin mAb	M64646	10-1560	beta 2 Microglobulin mAb	M64647	10-1561	Suitable for ELISA and Latex Immunosorbent Assay
beta 2 Microglobulin protein		30C-CP1022				>95% by SDS-PAGE
beta 2 Microglobulin protein		30C-CP1022U				>98% by SDS-PAGE
CA 15-3 mAb	M61675	10-CA15D	CA 15-3 mAb	M2012112	10-CA15B	Best pair for sandwich immunoassay
CA 15-3 mAb	M59891	10-CA15C	CA 15-3 mAb	M2012112	10-CA15B	Suitable for sandwich immunoassay
CA 15-3 mAb	M201211	10-CA15A	CA 15-3 mAb	M2012112	10-CA15B	Suitable for sandwich immunoassay
CA 15-3 mAb	M12145	10-1143	CA 15-3 mAb	M12146	10-1144	Specific for Human CA15-3
CA 15-3 mAb	M12147	10-1145	CA 15-3 mAb	M12146	10-1144	Suitable pairing for ELISA
CA 15-3 mAb	M002208	10-C03F	CA 15-3 mAb	M002204	10-C03E	M002208 targets the VNTR region
*CA 15-3 mAb	M002204	10-C03E	CA 15-3 mAb	M002204	10-C03E	M002204 pairs with itself in serum assays
CA 15-3 protein		30-AC16				Purified from human ascites fluid
CA 15-3 protein		30-AC17				Purified from human ascites fluid
CA 15-3 protein		30C-CP9064				Minimal crossreactivity with CA72-4,15-3,19-9/CEA/CYFRA/ Ferritin
CA 19-9 mAb	M12150	10-1148	CA 19-9 mAb	M12151	10-1149	Suitable pairing for ELISA
CA 19-9 mAb	M2012114	10-CA19A	CA 19-9 mAb	M2012113	10-CA19B	Suitable for sandwich immunoassay
CA 19-9 mAb	M081221	10-C04E				Excellent ELISA & IHC
CA 19-9 protein		30-AC15				Purified from human ascites fluid
CA 19-9 protein		30-AC14				Purified from human ascites fluid
CA 19-9 protein		30-AC09				Human cell line from colon
CA 19-9 protein		30C-CP9063				Prepared from human adenocarcinoma cell line
CA 50 mAb	M991149	10-C51A				Purified IgM monoclonal antibody
CA 72-4 protein		30-AC23				Purified from human ascites fluid
CA 72-4 protein		30-AC24				Purified from human ascites fluid
CA 125 mAb	X306	10R-C112c	CA 125 mAb	M002203	10-C02F	Excellent pair for ELISA
CA 125 mAb	X306	10R-C112c	CA 125 mAb	M100210	10-C02M	For use in sandwich immunoassay
CA125 mAb	M86555	10-2702	CA 125 mAb (HRP)	M86556	61-1065	Suitable for use in sandwich immunoassays
CA 125 mAb	M002201	10-C02E	CA 125 mAb	M002203	10-C02F	For use in ELISA and other sandwich immunoassays
CA 125 protein		30-AC20				Purified from human ascites fluid
CA 125 protein		30-AC21				Purified from human ascites fluid
CA 125 protein		30-AC11				Human cell line

■ Matched Pairs

* Can be used as capture and detection antibody

Capture Antibody/Antigen	Clone #	Catalog #	Detection Antibody	Clone #	Catalog #	Comments, Assay Type
CA 15-3 mAb	M59891	10-CA15C	CA 15-3 mAb	M2012112	61-CA15BHRP	For use in sandwich immunoassays
CA 242 mAb	M62861	10-1537	CA 242 mAb	M62862	10-1538	Suitable for use in ELISA and Lateral Flow
CA242 mAb	M86539	10-2687	CA242 mAb (HRP)	M86540	61-1063	Suitable for use in sandwich immunoassays
Cathepsin D mAb	M72053	10-2270	Cathepsin D mAb	M72054	10-2271	Excellent pair for ELISA
CEA mAb	M1709CEA2	10-1393	CEA mAb	M1709CEA1	10-1392	For use in sandwich immunoassay
CEA mAb	M0911041	10-C10F	CEA mAb	M0911042	10-C10G	Matched pair for immunoassays
CEA mAb	M111147	10-C10D	CEA mAb	M111146	10-C10E	Excellent pair for ELISA
CEA mAb	M18612CEA1	10-7882	CEA mAb	M18612CEA2	10-7883	For use in sandwich immunoassay
CEA mAb	M83091	10-2370	CEA mAb	M83130	10-2372	Use for native/recombinant ELISA & Lateral Flow
CEA mAb	M83092	10-2371	CEA mAb	M83130	10-2372	Use for native/recombinant ELISA & Lateral Flow
CEA mAb	M12138	10-1134	CEA mAb	M86331	10-2591	Suitable pairing for ELISA assays
CEA mAb	M83130	10-2372	CEA mAb	M83091	10-2370	Use for native/recombinant ELISA & Lateral Flow
CEA mAb	M83130	10-2372	CEA mAb	M83092	10-2371	Use for native/recombinant ELISA & Lateral Flow
CEA mAb	M12138	10-1134	CEA mAb	M86604	10-2651	Suitable pair for ELISA
CEA mAb	M12138	10-1134	CEA mAb	M86605	10-2652	Suitable pair for ELISA
CEA pAb		20-CG05				75,000 tests per ml by RIA
CEA protein		30-AC25				>80% by SDS-PAGE
CEA protein		30-AC30				>98% by SDS-PAGE
CYFRA21-1 mAb	M86541	10-2689	Cyfra21-1 mAb (HRP)	M86542	61-1064	Suitable for use in sandwich immunoassays
CYFRA21-1 mAb	M83199	10-2462	CYFRA21-1 mAb	M83196	10-2461	Pair for immunoassays. Use in WB also
E-selectin mAb	M72067	10-2284	E-selectin mAb	M72066	10-2283	Excellent pair for ELISA
Galectin 3 pAb		20R-3016	Galectin 3 pAb (HRP)		60R-2340	For use in ELISA and other sandwich immunoassays
Galectin 3 pAb		20R-3016	Galectin 3 pAb (Biotin)		60R-2341	For use in ELISA and other sandwich immunoassays
HE4 mAb	M83194	10-2459	HE4 mAb	M83195	10-2460	For use in sandwich immunoassays
HE4 mAb	M86535	10-2685	HE4 mAb (HRP)	M86536	61-1061	Suitable for use in sandwich immunoassays
HE4 mAb	M86537	10-2686	HE4 mAb (HRP)	M86538	61-1062	Suitable for use in sandwich immunoassays
Hsp60 mAb	M72078	10-2295	Hsp60 mAb	M72079	10-2296	Excellent pair for ELISA
MMP7 mAb	M72082	10-2299	MMP7 mAb	M72083	10-2300	Excellent pair for ELISA
NSE mAb	M12619NS1	10-N121A	NSE mAb	M18612NS1	10-7936	For use in sandwich immunoassay
NSE mAb	M18612NS2	10-7937	NSE mAb	M18612NS3	10-7938	For use in sandwich immunoassay
PAP mAb	M01010921	10-P45A	PAP mAb	M01010922	10-P45B	Good pair for ELISA and IRMA
PAP protein		30C-CP1016P				Prepared from human seminal fluid. >40% pure by SDS-PAGE
PAP protein		30C-CP1016				Prepared from human seminal fluid. >95% pure by SDS-PAGE
PSA mAb	M1709PSA2	10-1395	PSA mAb	M1709PSA1	10-1394	For use in ELISA and Lateral Flow assays
PSA mAb	M612166	10-P20A	PSA mAb	M72469	61-1004	For use in ELISA and other sandwich immunoassays
PSA mAb	M1202098	10-3143	PSA mAb	M1202097	10-3142	Suitable pairing for Lateral Flow. Can also be used in ELISA
PSA mAb	M701041	10-P20D	PSA mAb	M701042	10-P20E	This pair is utilized for a total PSA assay
PSA mAb	M612166	10-P20A	PSA mAb	M701042	10-P20E	This pair is utilized for a total PSA assay
PSA mAb	M612165	10-P21A	PSA mAb	M612166	10-P20A	This pair is utilized for the detection of free PSA
PSA mAb	M12619PS1	10-P142A	PSA mAb	M18612PS4	10-7948	For use in sandwich immunoassay
PSA pAb		70-XG69				Excellent for solid phase & detection. Suitable for IRMA, CLIA, ELISA
PSA protein		30C-CP1017P				Prepared from human seminal fluid. >40% pure by SDS-PAGE
PSA protein		30C-CP1017				Prepared from human seminal fluid. >95% pure by SDS-PAGE

■ Matched Pairs

* Can be used as capture and detection antibody

Capture Antibody/Antigen	Clone #	Catalog #	Detection Antibody	Clone #	Catalog #	Comments, Assay Type
PSA/ACT complex protein		30C-CP1097				PSA from human seminal fluid; ACT from human plasma
S100 mAb	M9940622	10-S17B	S100 mAb	M9940621	10-S17A	For use in sandwich immunoassay
S100 Beta mAb	M72102	10-2319	S100 Beta mAb	M72101	10-2318	Excellent pair for ELISA
TNF alpha mAb	M32253	10-T60C	TNF alpha mAb	M32255	10-T60D	For use in sandwich immunoassay

■ Matched Pairs

* Can be used as capture and detection antibody

Didn't find what you need?

Contact us to discuss your requirements at antibodies@fitzgerald-fii.com

Website www.fitzgerald-fii.com

Toll Free (USA) 800.370.2222

Tel 978.371.6446

Fax 978.371.2266

Fitzgerald Industries International

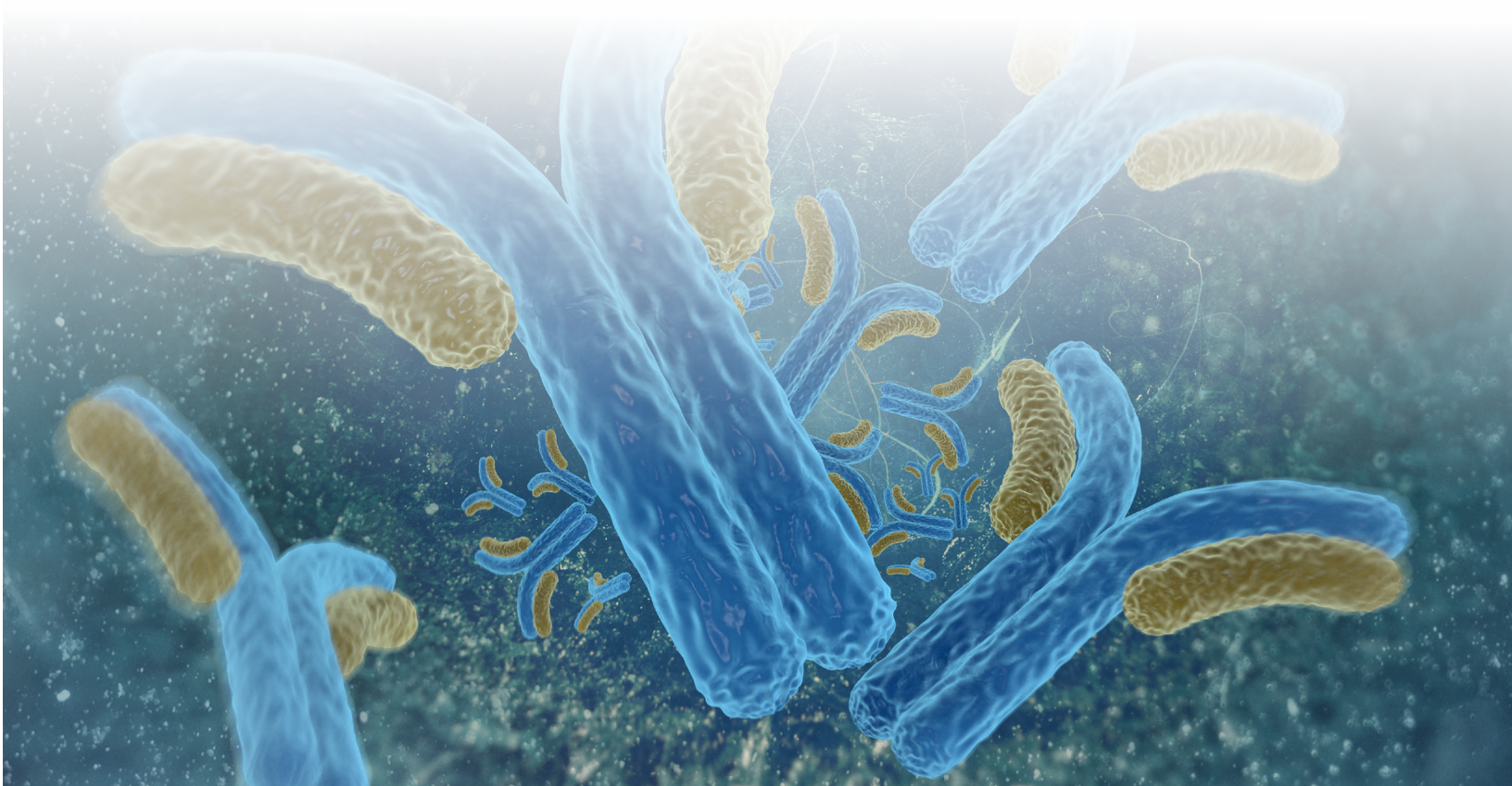
30 Sudbury Road

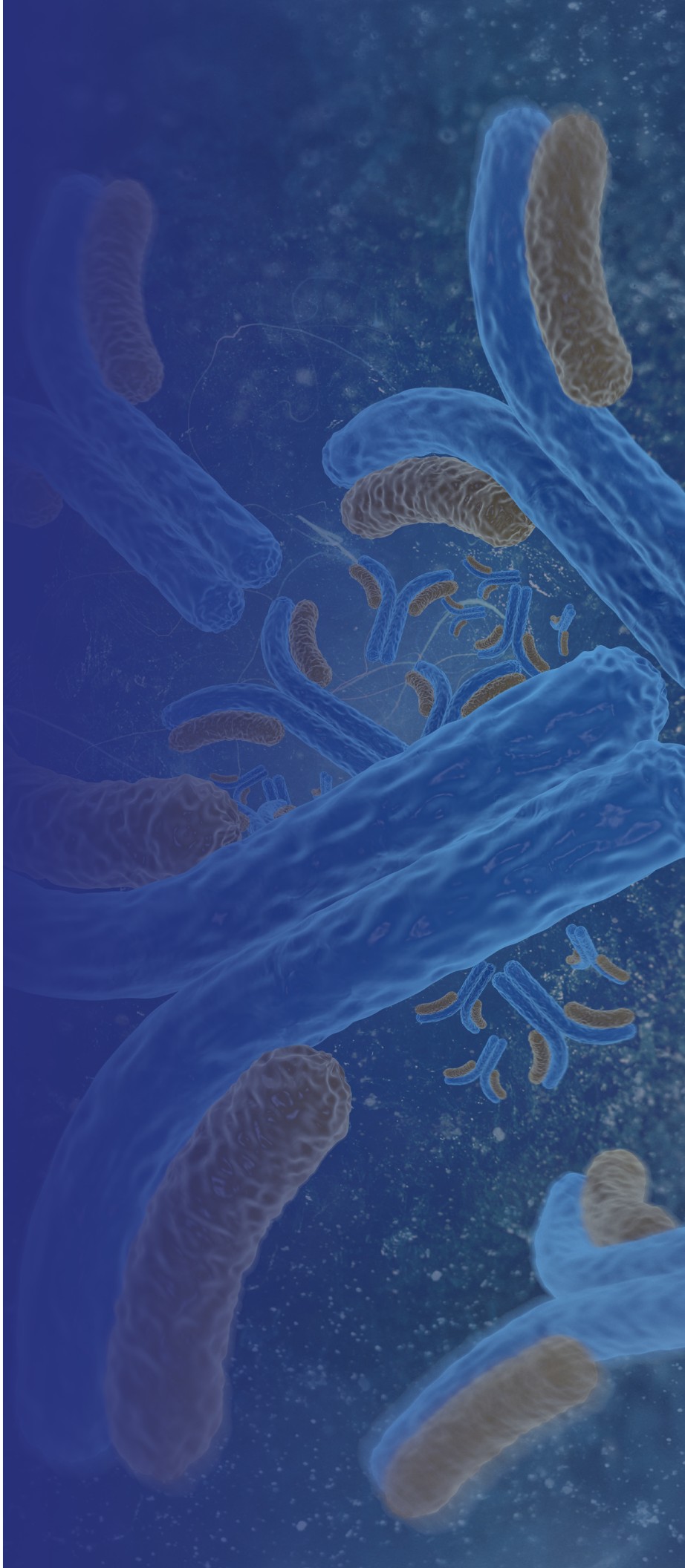
Suite 1 A N Acton

MA 01720

USA

www.fitzgerald-fii.com





E-mail orders and inquiries to
antibodies@fitzgerald-fii.com

Website	www.fitzgerald-fii.com
Toll Free (USA)	800.370.2222
Tel	978.371.6446
Fax	978.371.2266

Fitzgerald Industries International
30 Sudbury Road
Suite 1 A N Acton
MA 01720
USA



Fitzgerald