



Product Guide:

# Diabetes Products

**Diabetes mellitus**, or simply **diabetes**, is a group of metabolic diseases in which a person has high blood sugar, either because the pancreas does not produce enough insulin, or because cells do not respond to the insulin that is produced. Globally, as of 2010, an estimated 285 million people had diabetes, with type 2 making up about 90% of the cases. Its incidence is increasing rapidly, and by 2030, this number is estimated to almost double. Diabetes mellitus occurs throughout the world, but is more common (especially type 2) in the more developed countries.

There are three main types of diabetes mellitus (DM):

- Type 1 DM results from the body's failure to produce insulin, and presently requires the person to inject insulin or wear an insulin pump. This form was previously referred to as "insulin-dependent diabetes mellitus" (IDDM) or "juvenile diabetes".
- Type 2 DM results from insulin resistance, a condition in which cells fail to use insulin properly, sometimes combined with an absolute insulin deficiency. This form was previously referred to as non insulin-dependent diabetes mellitus (NIDDM) or "adult-onset diabetes".
- The third main form, gestational diabetes occurs when pregnant women without a previous diagnosis of diabetes develop a high blood glucose level. It may precede development of type 2 DM.

Other forms of diabetes mellitus include congenital diabetes, which is due to genetic defects of insulin secretion, cystic fibrosis-related diabetes, steroid diabetes induced by high doses of glucocorticoids, and several forms of monogenic diabetes

## DIABETES

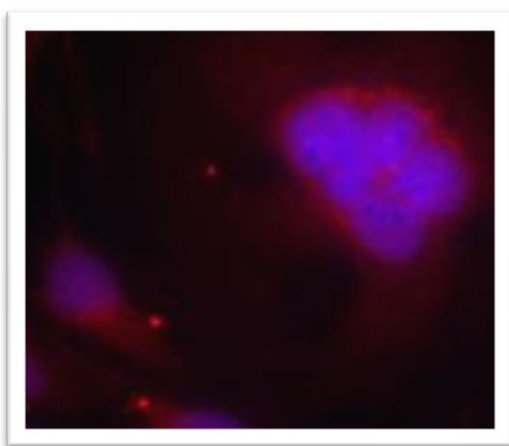
Catalog No.	Product Name	Host	Clone	Species	Grade & Purity	Applications	URL
<b>70R-6686</b>	ABCC8 antibody	Rabbit				WB	<a href="#">Click here</a>
<b>33R-7184</b>	ABCC8 Blocking Peptide					WB, IHC	<a href="#">Click here</a>
<b>55R-1454</b>	Adipogenesis Assay Kit					Functional Assay	<a href="#">Click here</a>
<b>30R-2757</b>	Adiponectin protein			Human			<a href="#">Click here</a>
<b>30R-2756</b>	Adiponectin protein			Human			<a href="#">Click here</a>
<b>30R-2755</b>	Adiponectin protein			Human			<a href="#">Click here</a>
<b>30R-AA040</b>	Adiponectin protein			Human	>97% pure by SDS PAGE and HPLC		<a href="#">Click here</a>
<b>70R-7632</b>	Adiponectin Receptor 2 antibody	Rabbit				WB	<a href="#">Click here</a>
<b>10C-CR2005M1</b>	alpha 2 Macroglobulin antibody	Mouse	3127485				<a href="#">Click here</a>
<b>30-1040</b>	alpha 2 Macroglobulin protein				Human	>96% by SDS-PAGE	<a href="#">Click here</a>
<b>30R-AM036</b>	alpha 2 Macroglobulin protein				Human	>96% pure by SDS PAGE	<a href="#">Click here</a>
<b>30C-CP3005</b>	alpha 2 Macroglobulin protein				Human	> 95% pure by SDS PAGE	<a href="#">Click here</a>
<b>30-1041</b>	alpha 2 Macroglobulin protein				Rat	>90% by SDS PAGE	<a href="#">Click here</a>
<b>10R-A125a</b>	Amylin antibody	Mouse	R10/99				<a href="#">Click here</a>
<b>70R-13974</b>	ANGPTL4 antibody	Rabbit				WB	<a href="#">Click here</a>
<b>70R-10936</b>	ANGPTL4 antibody	Rabbit				WB	<a href="#">Click here</a>
<b>30R-2677</b>	ApoC1 protein			Human			<a href="#">Click here</a>
<b>30-AA32</b>	ApoC1 protein			Human	> 95% pure by SDS PAGE		<a href="#">Click here</a>
<b>10R-2093</b>	ApoM antibody	Mouse	10C3G5			ELISA, IF, WB	<a href="#">Click here</a>
<b>10R-2092</b>	ApoM antibody	Mouse	8F12C6B8			ELISA, IF, WB	<a href="#">Click here</a>
<b>80R-1287</b>	ApoM protein (His tag)			Human	> 90% by SDS - PAGE	SDS-PAGE	<a href="#">Click here</a>
<b>10R-2040</b>	ApoO antibody	Mouse	2F1			ELISA, WB	<a href="#">Click here</a>

## DIABETES

Catalog No.	Product Name	Host	Clone	Species	Grade & Purity	Applications	URL
<b>70R-12205</b>	AR beta 3 antibody	Rabbit				WB	<a href="#">Click here</a>
<b>70R-12715</b>	ARHGAP4 antibody	Rabbit				IF, ICC, IHC-P, WB	<a href="#">Click here</a>
<b>80R-2010</b>	ARL15 protein (His tag)			Human	> 85% by SDS - PAGE	SDS-PAGE	<a href="#">Click here</a>
<b>10R-1896</b>	ARNTL antibody	Mouse	1C5			ELISA, WB	<a href="#">Click here</a>
<b>10R-1418</b>	ARNTL antibody	Mouse	621C3a			Dot Blot	<a href="#">Click here</a>
<b>20R-2309</b>	ASK1 antibody	Rabbit				IF, IHC, WB	<a href="#">Click here</a>
<b>20R-2301</b>	ASK1 antibody	Rabbit				IF, IHC, WB	<a href="#">Click here</a>
<b>20R-2027</b>	ASK1 antibody	Rabbit				IHC, WB	<a href="#">Click here</a>
<b>20R-2026</b>	ASK1 antibody	Rabbit				IHC, WB	<a href="#">Click here</a>
<b>55R-ORG5BM</b>	beta 2 Microglobulin ELISA kit					ELISA	<a href="#">Click here</a>
<b>70R-7634</b>	beta Amyloid antibody	Rabbit				IHC, WB	<a href="#">Click here</a>
<b>20R-2490</b>	BMAL1 antibody	Rabbit				WB	<a href="#">Click here</a>
<b>20-RDIWBRO</b>	Bromocriptine antibody	Rabbit					<a href="#">Click here</a>
<b>55R-IB79101</b>	C Peptide 1 ELISA kit					ELISA	<a href="#">Click here</a>
<b>30-AC96</b>	C Peptide protein			Human	>98% pure by HPLC		<a href="#">Click here</a>
<b>70R-7173</b>	C1QTNF1 antibody	Rabbit				WB	<a href="#">Click here</a>
<b>33R-10194</b>	C1QTNF1 Blocking Peptide					WB, IHC	<a href="#">Click here</a>
<b>55R-IB79213</b>	Candida albicans IgA ELISA kit					ELISA	<a href="#">Click here</a>
<b>55R-IB79214</b>	Candida albicans IgG ELISA kit					ELISA	<a href="#">Click here</a>
<b>55R-IB79215</b>	Candida albicans IgM ELISA kit					ELISA	<a href="#">Click here</a>
<b>80R-1737</b>	CAPSL protein (His tag)			Human	> 90% by SDS - PAGE	SDS-PAGE	<a href="#">Click here</a>
<b>10R-6363</b>	CD20 antibody	Rat	AISB12			FC, WB	<a href="#">Click here</a>
<b>61R-1220</b>	CD20 antibody (PE)	Rat	AISB12			FC	<a href="#">Click here</a>
<b>30R-2682</b>	CD26 protein			Human			<a href="#">Click here</a>
<b>30R-2681</b>	CD26 protein			Human			<a href="#">Click here</a>
<b>61R-1939</b>	CD38 antibody (PE)	Mouse	T16			FC, IHC, IHC-F	<a href="#">Click here</a>
<b>70R-9670</b>	CD3E antibody	Rabbit				WB	<a href="#">Click here</a>
<b>33R-7793</b>	CD3E Blocking Peptide					WB, IHC	<a href="#">Click here</a>
<b>30R-2917</b>	CD3E protein (His tag)			Human	>90% pure	SDS-PAGE	<a href="#">Click here</a>
<b>10R-2436</b>	CDK4 antibody	Mouse	DCS-156			IHC, WB	<a href="#">Click here</a>
<b>10R-2435</b>	CDK4 antibody	Mouse	DCS-35			IP, WB	<a href="#">Click here</a>

## DIABETES

Catalog No.	Product Name	Host	Clone	Species	Grade & Purity	Applications	URL
<b>10R-2375</b>	CDK4 antibody	Mouse	DCS-156			IHC, WB	<a href="#">Click here</a>
<b>10R-2374</b>	CDK4 antibody	Mouse	DCS-35			IP, WB	<a href="#">Click here</a>
<b>10R-7839</b>	CDK6 antibody	Mouse	IML-6			WB, ICC	<a href="#">Click here</a>
<b>70R-10702</b>	CDK6 antibody	Rabbit				IHC	<a href="#">Click here</a>
<b>70R-10701</b>	CDK6 antibody	Rabbit				IHC	<a href="#">Click here</a>
<b>10R-2453</b>	CDK6 antibody	Mouse	DCS-83			IHC, IP, WB	<a href="#">Click here</a>
<b>10R-2439</b>	CDK6 antibody	Mouse	DCS-83			IP, IHC, WB	<a href="#">Click here</a>
<b>70R-10699</b>	CDK6 antibody (Phospho-Tyr13)	Rabbit				IHC, IF	<a href="#">Click here</a>
<b>70R-10700</b>	CDK6 antibody (Phospho-Tyr24)	Rabbit				IHC	<a href="#">Click here</a>
<b>80R-2657</b>	CPE protein (His tag)			Human		SDS-PAGE	<a href="#">Click here</a>
<b>20R-2761</b>	CRABP2 antibody	Rabbit				WB	<a href="#">Click here</a>
<b>70R-10699</b>	CDK6 antibody (Phospho-Tyr13)	Rabbit				IHC, IF	<a href="#">Click here</a>
<b>10R-1131</b>	CRABP2 antibody	Mouse	AT2E11			ELISA, WB	<a href="#">Click here</a>
<b>30R-1180</b>	CRABP2 protein			Human	> 95% by SDS - PAGE	SDS-PAGE	<a href="#">Click here</a>
<b>80R-2663</b>	CTLA4 protein (His tag)			Human		SDS-PAGE	<a href="#">Click here</a>
<b>55R-1526</b>	DPP4 Assay Kit					Functional Assay	<a href="#">Click here</a>
<b>20R-DR028</b>	DPP9 antibody	Rabbit				IHC-P	<a href="#">Click here</a>
<b>20R-DR027</b>	DPP9 antibody	Rabbit				IHC-P	<a href="#">Click here</a>
<b>20R-DR026</b>	DPP9 antibody	Rabbit				IHC-P	<a href="#">Click here</a>
<b>55R-1473</b>	D-Sorbitol Colorimetric Assay Kit					Functional Assay	<a href="#">Click here</a>



Immunofluorescent staining  
using FKHR antibody

(20R-2313)

## DIABETES

Catalog No.	Product Name	Host	Clone	Species	Grade & Purity	Applications	URL
<b>10R-1468</b>	EHMT1 antibody	Mouse	2312C2a			Dot Blot, ICC	<a href="#">Click here</a>
<b>70R-4510</b>	ENSA antibody	Rabbit				WB	<a href="#">Click here</a>
<b>33R-5662</b>	ENSA Blocking Peptide					WB, IHC	<a href="#">Click here</a>
<b>80R-1241</b>	ENSA protein (His tag)			Human	> 90% by SDS - PAGE	SDS-PAGE	<a href="#">Click here</a>
<b>70R-13805</b>	FABP4 antibody	Rabbit				WB	<a href="#">Click here</a>
<b>70R-10931</b>	FABP4 antibody	Rabbit				WB, IP	<a href="#">Click here</a>
<b>70R-10930</b>	FABP4 antibody	Rabbit				IHC, IF	<a href="#">Click here</a>
<b>20R-2706</b>	FABP4 antibody	Rabbit				WB	<a href="#">Click here</a>
<b>10R-1967</b>	FABP4 antibody	Mouse	9B8D			ELISA, WB	<a href="#">Click here</a>
<b>10R-1843</b>	FABP4 antibody	Mouse	5H11A4E11			ELISA, WB	<a href="#">Click here</a>
<b>10R-1118</b>	FABP4 antibody	Mouse	3F4			ELISA, WB	<a href="#">Click here</a>
<b>80R-1109</b>	FGF21 protein (His tag)			Human	> 90% by SDS - PAGE	SDS-PAGE	<a href="#">Click here</a>
<b>70R-2730</b>	FILIP1L antibody	Rabbit				WB	<a href="#">Click here</a>
<b>33R-4655</b>	FILIP1L Blocking Peptide					WB, IHC	<a href="#">Click here</a>
<b>10R-F114a</b>	FK506 antibody	Mouse	FK1			ELISA	<a href="#">Click here</a>
<b>70R-11135</b>	FKHR antibody	Rabbit				IHC, WB	<a href="#">Click here</a>
<b>70R-11134</b>	FKHR antibody	Rabbit				IHC, WB	<a href="#">Click here</a>
<b>20R-2331</b>	FKHR antibody	Rabbit				IHC, WB	<a href="#">Click here</a>
<b>20R-2313</b>	FKHR antibody	Rabbit				IF, IHC, WB	<a href="#">Click here</a>
<b>20R-1990</b>	FKHR antibody	Rabbit				IF, IHC, WB	<a href="#">Click here</a>
<b>20R-1972</b>	FKHR antibody	Rabbit				IF, IHC, WB	<a href="#">Click here</a>
<b>70R-11132</b>	FKHR antibody (Phospho-Ser256)	Rabbit				IHC, WB	<a href="#">Click here</a>
<b>70R-11133</b>	FKHR antibody (Phospho-Ser319)	Rabbit				IHC, WB	<a href="#">Click here</a>
<b>10R-1835</b>	FOXA2 antibody	Mouse	7H4B7			ELISA, IHC, WB	<a href="#">Click here</a>
<b>70R-12049</b>	FOXO1a antibody	Rabbit				IP, WB	<a href="#">Click here</a>
<b>10R-1609</b>	FOXO1A antibody	Mouse	738C3a			Dot Blot	<a href="#">Click here</a>
<b>70R-4523</b>	FTO antibody	Rabbit				WB	<a href="#">Click here</a>
<b>33R-10037</b>	FTO Blocking Peptide					WB, IHC	<a href="#">Click here</a>
<b>70R-9261</b>	Gad1 antibody	Rabbit				IHC, WB	<a href="#">Click here</a>
<b>70R-4463</b>	GAD1 antibody	Rabbit				WB	<a href="#">Click here</a>
<b>33R-9262</b>	Gad1 Blocking Peptide					WB, IHC	<a href="#">Click here</a>
<b>33R-5764</b>	GAD1 Blocking Peptide					WB, IHC	<a href="#">Click here</a>
<b>70R-13519</b>	GAD65 antibody	Rabbit				IF, ICC, IHC-P, WB	<a href="#">Click here</a>
<b>70R-12512</b>	GAD65 antibody	Rabbit				WB	<a href="#">Click here</a>

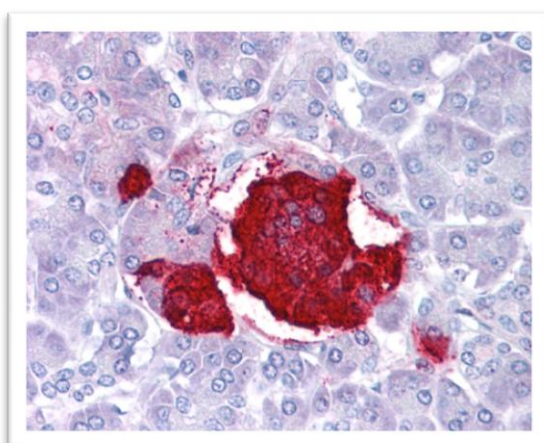
## DIABETES

Catalog No.	Product Name	Host	Clone	Species	Grade & Purity	Applications	URL
<b>70R-12622</b>	GAD67 antibody	Rabbit				IF, ICC, WB	<a href="#">Click here</a>
<b>80R-1068</b>	GADD153 protein (His tag)			Human	> 90% by SDS - PAGE	SDS-PAGE	<a href="#">Click here</a>
<b>80R-1895</b>	GCG protein (His tag)			Human	> 95% by SDS - PAGE	SDS-PAGE	<a href="#">Click here</a>
<b>70R-11653</b>	GCK antibody	Rabbit				ELISA, IHC, WB	<a href="#">Click here</a>
<b>70R-11652</b>	GCK antibody	Rabbit				ELISA, IHC, WB	<a href="#">Click here</a>
<b>70R-10324</b>	GCK antibody	Rabbit				WB	<a href="#">Click here</a>
<b>33R-10396</b>	GCK Blocking Peptide					WB, IHC	<a href="#">Click here</a>
<b>70R-12430</b>	GDF3 antibody	Rabbit				WB	<a href="#">Click here</a>
<b>70R-GR019</b>	GDF3 antibody	Rabbit			Affinity Purified	ELISA, Inhibition, WB	<a href="#">Click here</a>
<b>30R-2698</b>	GDF3 protein			Human	> 98% pure		<a href="#">Click here</a>
<b>30R-AG007</b>	GDF3 protein			Human	>98% pure by SDS PAGE and HPLC		<a href="#">Click here</a>
<b>30R-AG007</b>	GDF3 protein			Human	>98% pure by SDS PAGE and HPLC		<a href="#">Click here</a>
<b>20R-2559</b>	GIP antibody	Rabbit				IF, IHC	<a href="#">Click here</a>
<b>80R-2766</b>	GIP protein (His tag)			Human	>90% by SDS-PAGE	SDS-PAGE	<a href="#">Click here</a>
<b>10R-7816</b>	GIPC antibody	Mouse	AT1G10			ELISA, WB	<a href="#">Click here</a>
<b>70R-13000</b>	GIPC1 antibody	Rabbit				IHC-P, WB	<a href="#">Click here</a>
<b>70R-4857</b>	GIPC1 antibody	Rabbit				WB	<a href="#">Click here</a>
<b>33R-8461</b>	GIPC1 Blocking Peptide					WB, IHC	<a href="#">Click here</a>
<b>80R-1376</b>	GIPC1 protein (His tag)			Human	> 95 % by SDS - PAGE	SDS-PAGE	<a href="#">Click here</a>
<b>70R-1216</b>	GIPC2 antibody	Rabbit				WB, IHC	<a href="#">Click here</a>
<b>33R-6291</b>	GIPC2 Blocking Peptide					WB, IHC	<a href="#">Click here</a>
<b>80R-2142</b>	GIPC2 protein (His tag)			Human	> 95% by SDS - PAGE	SDS-PAGE	<a href="#">Click here</a>
<b>70R-13150</b>	GIPC3 antibody	Rabbit				WB	<a href="#">Click here</a>
<b>70R-8498</b>	GIPC3 antibody	Rabbit				WB	<a href="#">Click here</a>
<b>33R-9183</b>	GIPC3 Blocking Peptide					WB, IHC	<a href="#">Click here</a>
<b>20R-2538</b>	Glicentin/ Glucagon antibody	Rabbit				IHC	<a href="#">Click here</a>
<b>70R-8435</b>	GLIS3 antibody	Rabbit				WB	<a href="#">Click here</a>
<b>20R-1239</b>	GLIS3 antibody	Rabbit				WB	<a href="#">Click here</a>



## DIABETES

Catalog No.	Product Name	Host	Clone	Species	Grade & Purity	Applications	URL
<b>33R-7478</b>	GLIS3 Blocking Peptide					WB, IHC	<a href="#">Click here</a>
<b>33R-7242</b>	GLIS3 Blocking Peptide					WB, IHC	<a href="#">Click here</a>
<b>10R-8022</b>	GLP1 antibody	Mouse	HGL-B5			ELISA, IF	<a href="#">Click here</a>
<b>10R-1934</b>	GLP1 antibody	Mouse	1B7B4			ELISA, WB	<a href="#">Click here</a>
<b>20C-CR8056RP</b>	GLP1 antibody	Rabbit					<a href="#">Click here</a>
<b>30R-AG026</b>	GLP1 protein			Human	>98% pure by SDS PAGE and HPLC		<a href="#">Click here</a>
<b>70R-5959</b>	GLP2R antibody	Rabbit				WB	<a href="#">Click here</a>
<b>33R-4510</b>	GLP2R Blocking Peptide					WB, IHC	<a href="#">Click here</a>
<b>80R-2849</b>	glpE protein (His tag)			E.coli	> 95% pure	SDS-PAGE	<a href="#">Click here</a>
<b>10R-7860</b>	Glucagon antibody	Mouse	IMD-7			IHC-P	<a href="#">click here</a>
<b>20R-2561</b>	Glucagon antibody	Guinea Pig				IF, IHC	<a href="#">Click here</a>
<b>20R-2537</b>	Glucagon antibody	Rabbit				IHC	<a href="#">Click here</a>
<b>20-GR20</b>	Glucagon antibody	Rabbit					<a href="#">Click here</a>
<b>70R-6207</b>	Glucagon antibody	Rabbit				WB	<a href="#">Click here</a>
<b>70R-1710</b>	Glucagon antibody	Rabbit				WB	<a href="#">Click here</a>
<b>20R-GR006</b>	Glucagon antibody	Rabbit				IHC	<a href="#">Click here</a>
<b>20-GR20T</b>	Glucagon antibody	Rabbit					<a href="#">Click here</a>



Immunohistochemical staining  
using Leptin antibody

(70R-6223)

## DIABETES

Catalog No.	Product Name	Host	Clone	Species	Grade & Purity	Applications	URL
<b>33R-9829</b>	Glucagon Blocking Peptide					WB, IHC	<a href="#">Click here</a>
<b>33R-5415</b>	Glucagon Blocking Peptide					WB, IHC	<a href="#">Click here</a>
<b>70R-GR009</b>	GLUT10 antibody	Rabbit				IHC, WB	<a href="#">Click here</a>
<b>70R-6693</b>	GLUT4 antibody	Rabbit				WB	<a href="#">Click here</a>
<b>33R-5310</b>	GLUT4 Blocking Peptide					WB, IHC	<a href="#">Click here</a>
<b>55R-1481</b>	Glycogen Assay Kit					Functional Assay	<a href="#">Click here</a>
<b>70R-5719</b>	GNAI2 antibody	Rabbit				WB	<a href="#">Click here</a>
<b>70R-5712</b>	GNAI2 antibody	Rabbit				WB	<a href="#">Click here</a>
<b>33R-2830</b>	GNAI2 Blocking Peptide					WB, IHC	<a href="#">Click here</a>
<b>33R-2827</b>	GNAI2 Blocking Peptide					WB, IHC	<a href="#">Click here</a>
<b>80R-2472</b>	GNAI2 protein (His tag)			Human	>90% by SDS-PAGE	SDS-PAGE	<a href="#">Click here</a>
<b>70R-13514</b>	Haptoglobin antibody	Rabbit				IF, ICC, IHC-P, WB	<a href="#">Click here</a>
<b>70R-12755</b>	Haptoglobin antibody	Rabbit				IF, ICC, IHC-P, WB	<a href="#">Click here</a>
<b>10-1166</b>	Hemoglobin A1c antibody	Mouse	M12165			ELISA	<a href="#">Click here</a>
<b>70R-13570</b>	HNF1 alpha antibody	Rabbit				IHC-P, WB	<a href="#">Click here</a>
<b>20R-2772</b>	HNF1B antibody	Rabbit				WB	<a href="#">Click here</a>
<b>70R-11466</b>	HNF4 alpha antibody	Rabbit				IHC	<a href="#">Click here</a>
<b>20R-1909</b>	HNF4 alpha antibody	Rabbit				WB	<a href="#">Click here</a>
<b>70R-11627</b>	HNF4A antibody	Rabbit				ELISA, WB	<a href="#">Click here</a>
<b>70R-11625</b>	HNF4A antibody	Rabbit				ELISA, WB	<a href="#">Click here</a>
<b>70R-2034</b>	HNF4A antibody	Rabbit				WB	<a href="#">Click here</a>
<b>33R-5264</b>	HNF4A Blocking Peptide					WB, IHC	<a href="#">Click here</a>
<b>55R-1720</b>	Human Adiponectin ELISA kit					ELISA	<a href="#">Click here</a>
<b>55R-E09</b>	Human Adiponectin ELISA kit					ELISA	<a href="#">Click here</a>
<b>55R-1752</b>	Human Fetuin A ELISA kit					ELISA	<a href="#">Click here</a>
<b>55R-RD19103710 OR</b>	Human Fetuin A ELISA kit					ELISA	<a href="#">Click here</a>
<b>55R-27763</b>	Human GIP ELISA kit					ELISA	<a href="#">Click here</a>

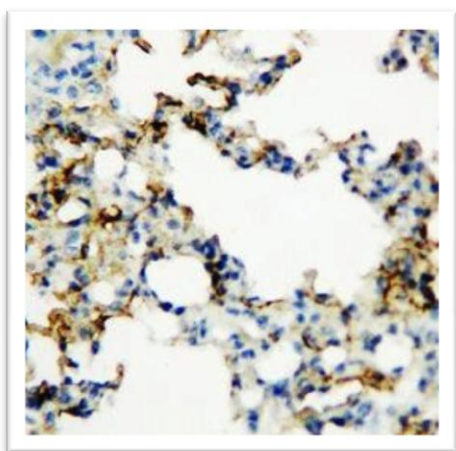


## DIABETES

Catalog No.	Product Name	Host	Clone	Species	Grade & Purity	Applications	URL
<b>31-A119</b>	Human IgG3 protein			Human	> 95% pure by SDS PAGE		<a href="#">Click here</a>
<b>55R-IB49621</b>	Human IL2 ELISA kit					ELISA	<a href="#">Click here</a>
<b>55R-IB79401</b>	Human Insulin ELISA kit					ELISA	<a href="#">Click here</a>
<b>55R-1635</b>	Human Leptin ELISA kit					ELISA	<a href="#">Click here</a>
<b>55R-27775</b>	Human Leptin ELISA kit					ELISA	<a href="#">Click here</a>
<b>55R-1714</b>	Human Resistin ELISA kit					ELISA	<a href="#">Click here</a>
<b>55R-E50</b>	Human Resistin ELISA kit					ELISA	<a href="#">Click here</a>
<b>55R-IB49626</b>	Human sCD8 ELISA kit					ELISA	<a href="#">Click here</a>
<b>55R-IB49660</b>	Human sCTLA4 ELISA kit					ELISA	<a href="#">Click here</a>
<b>90R-107</b>	Human Serum (Insulin Depleted)			Human			<a href="#">Click here</a>
<b>90R-103</b>	Human Serum (Insulin Depleted)			Human			<a href="#">Click here</a>
<b>70R-8513</b>	IAPP antibody	Rabbit				WB	<a href="#">Click here</a>
<b>33R-6036</b>	IAPP Blocking Peptide					WB, IHC	<a href="#">Click here</a>
<b>70R-3830</b>	ICA1 antibody	Rabbit				WB	<a href="#">Click here</a>
<b>70R-3359</b>	ICA1 antibody	Rabbit				WB	<a href="#">Click here</a>
<b>33R-8545</b>	ICA1 Blocking Peptide					WB, IHC	<a href="#">Click here</a>
<b>33R-6795</b>	ICA1 Blocking Peptide					WB, IHC	<a href="#">Click here</a>
<b>70R-7840</b>	IDE antibody	Rabbit				WB	<a href="#">Click here</a>
<b>33R-10357</b>	IDE Blocking Peptide					WB, IHC	<a href="#">Click here</a>
<b>55R-IGFE01</b>	IGFBP1 ELISA kit					ELISA	<a href="#">Click here</a>
<b>55R-IB59128</b>	IGFBP1 ELISA kit					ELISA	<a href="#">Click here</a>
<b>20R-IP001</b>	Insulin + Proinsulin antibody	Guinea Pig			Undiluted serum	IF, IHC-F, IHC-P	<a href="#">Click here</a>
<b>70R-12433</b>	Insulin antibody	Rabbit				WB	<a href="#">Click here</a>
<b>10R-7865</b>	Insulin antibody	Mouse	ISL-8J			IHC-P	<a href="#">Click here</a>
<b>10R-7711</b>	Insulin antibody	Mouse	7F8			ELISA	<a href="#">Click here</a>
<b>70R-10659</b>	Insulin antibody	Guinea Pig				ICC, IHC	<a href="#">Click here</a>
<b>70R-10671</b>	Insulin antibody	Rabbit				IHC, ICC	<a href="#">Click here</a>
<b>20R-2564</b>	Insulin antibody	Guinea Pig				IF, IHC	<a href="#">Click here</a>
<b>20R-2539</b>	Insulin antibody	Rabbit				ELISA, IHC	<a href="#">Click here</a>
<b>10C-CR2024M1</b>	Insulin antibody	Mouse	423631			ELISA, RIA	<a href="#">Click here</a>
<b>10R-I134a</b>	Insulin antibody	Mouse	D4B8			ELISA, IHC	<a href="#">Click here</a>
<b>10-I30C</b>	Insulin antibody	Mouse	M322214			ELISA, IHC	<a href="#">Click here</a>

## DIABETES

Catalog No.	Product Name	Host	Clone	Species	Grade & Purity	Applications	URL
<b>10R-I134b</b>	Insulin antibody	Mouse	8E2			ELISA	<a href="#">Click here</a>
<b>10-I30F</b>	Insulin antibody	Mouse	M705218			ELISA	<a href="#">Click here</a>
<b>10R-I134c</b>	Insulin antibody	Mouse	7F8			ELISA	<a href="#">Click here</a>
<b>10-I30B</b>	Insulin antibody	Mouse	M322213			ELISA	<a href="#">Click here</a>
<b>10R-I134e</b>	Insulin antibody	Mouse	E6E5			ELISA	<a href="#">Click here</a>
<b>10R-I134d</b>	Insulin antibody	Mouse	3A6			ELISA	<a href="#">Click here</a>
<b>10-I30E</b>	Insulin antibody	Mouse	M705217			ELISA	<a href="#">Click here</a>
<b>20-IP35</b>	Insulin antibody	Guinea Pig				User optimized	<a href="#">Click here</a>
<b>20-IP30</b>	Insulin antibody	Guinea Pig				ELISA, IHC, RIA	<a href="#">Click here</a>
<b>75R-1058</b>	Insulin antibody (Prediluted for IHC)	Guinea Pig				ICC, IHC	<a href="#">Click here</a>
<b>75R-1037</b>	Insulin antibody (Prediluted for IHC)	Rabbit				IHC	<a href="#">Click here</a>
<b>10R-I134f</b>	Insulin beta chain antibody	Mouse	C7C9			ELISA	<a href="#">Click here</a>
<b>10-I30A</b>	Insulin beta chain antibody	Mouse	M322212			ELISA	<a href="#">Click here</a>
<b>55R-ORG520</b>	Insulin ELISA kit					ELISA	<a href="#">Click here</a>
<b>30R-2704</b>	Insulin protein			Human	> 98% pure		<a href="#">Click here</a>
<b>30R-AI091</b>	Insulin protein			Human	>98% pure by SDS PAGE and HPLC	User optimized	<a href="#">Click here</a>
<b>70R-13801</b>	Insulin R alpha antibody	Rabbit				WB, IHC-P	<a href="#">Click here</a>



Immunohistochemical staining  
using RAGE antibody

(70R-13753)

## DIABETES

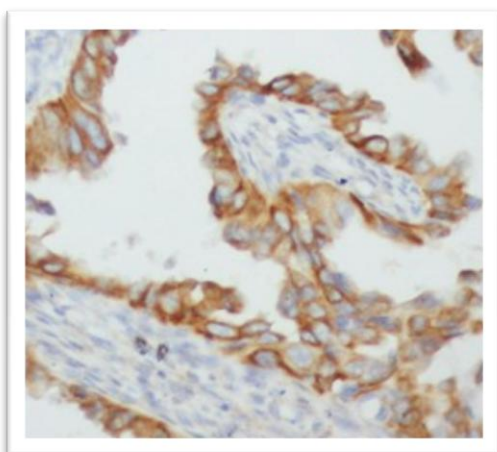
Catalog No.	Product Name	Host	Clone	Species	Grade & Purity	Applications	URL
<b>10R-I137b</b>	Insulin Receptor beta subunit antibody	Mouse	CT-3			ELISA, IHC-F, IHC-P, IP, WB	<a href="#">Click here</a>
<b>10R-I137a</b>	Insulin Receptor beta subunit antibody	Mouse	CT-1			ELISA, IP	<a href="#">Click here</a>
<b>10R-I137ap</b>	Insulin Receptor beta subunit antibody	Mouse	CT-3			ELISA, IP	<a href="#">Click here</a>
<b>10-I34A</b>	Insulin+Proinsulin antibody	Mouse	M322215			ELISA, IHC-F	<a href="#">Click here</a>
<b>10R-I136a</b>	Insulin+Proinsulin antibody	Mouse	D6C4			ELISA, IHC-F	<a href="#">Click here</a>
<b>10R-I136b</b>	Insulin+Proinsulin antibody	Mouse	D3E7			ELISA, IHC-F	<a href="#">Click here</a>
<b>10-I34B</b>	Insulin+Proinsulin antibody	Mouse	M322216			ELISA, IHC-F	<a href="#">Click here</a>
<b>61R-I136bBT</b>	Insulin+Proinsulin antibody (biotin)	Mouse	D3E7			ELISA, IHC-F	<a href="#">Click here</a>
<b>30R-2289</b>	Insulin-like growth factor I protein			Human	>95% by SDS-PAGE		<a href="#">Click here</a>
<b>30R-2531</b>	IP10 protein			Mouse	> 97% pure		<a href="#">Click here</a>
<b>30R-2530</b>	IP10 protein			Human	> 98% pure		<a href="#">Click here</a>
<b>20R-2387</b>	IRS1 antibody	Rabbit				IF, WB	<a href="#">Click here</a>
<b>20R-2386</b>	IRS1 antibody	Rabbit				IF, IHC, WB	<a href="#">Click here</a>
<b>20R-1996</b>	IRS1 antibody	Rabbit				WB	<a href="#">Click here</a>
<b>10R-1044</b>	ISG15 antibody	Mouse	3E5			ELISA, WB	<a href="#">Click here</a>
<b>80R-1055</b>	ISG15 protein (Calmodulin tag)			Human	> 98% by SDS - PAGE	SDS-PAGE	<a href="#">Click here</a>
<b>10R-2056</b>	ISL1 antibody	Mouse	1B1			ELISA, IF, WB	<a href="#">click here</a>
<b>10R-2055</b>	ISL1 antibody	Mouse	1H9			ELISA, IF, IHC, WB	<a href="#">Click here</a>
<b>80R-2879</b>	KLF7 protein (His tag)			Human	> 90% pure	SDS-PAGE	<a href="#">Click here</a>
<b>55R-1469</b>	Lactate Assay Kit					Functional Assay	<a href="#">Click here</a>
<b>55R-1450</b>	Lactate Assay Kit					Functional Assay	<a href="#">Click here</a>
<b>30R-1049</b>	Leptin protein			Human	> 95% by SDS - PAGE	SDS-PAGE	<a href="#">Click here</a>
<b>70R-7737</b>	Leptin antibody	Rabbit				WB	<a href="#">Click here</a>
<b>70R-7736</b>	Leptin antibody	Rabbit				WB	<a href="#">Click here</a>
<b>70R-7735</b>	Leptin antibody	Rabbit				WB	<a href="#">Click here</a>

## DIABETES

Catalog No.	Product Name	Host	Clone	Species	Grade & Purity	Applications	URL
<b>70R-6223</b>	Leptin antibody	Rabbit				WB	<a href="#">Click here</a>
<b>33R-5033</b>	Leptin Blocking Peptide					WB, IHC	<a href="#">Click here</a>
<b>30R-2361</b>	Leptin protein			Human	> 95% pure		<a href="#">Click here</a>
<b>30R-2360</b>	Leptin protein			Mouse			<a href="#">Click here</a>
<b>30R-2359</b>	Leptin protein			Human	> 98% pure		<a href="#">Click here</a>
<b>30R-1100</b>	Leptin protein			Mouse	> 95% by SDS - PAGE	SDS-PAGE	<a href="#">Click here</a>
<b>55R-ORG5MA</b>	MicroAlbumin ELISA kit					ELISA	<a href="#">Click here</a>
<b>55R-1361</b>	Mitochondrial DNA Isolation Kit					Cell culture, Functional Assay	<a href="#">Click here</a>
<b>55R-1721</b>	Mouse Adiponectin ELISA kit					ELISA	<a href="#">Click here</a>
<b>55R-RD29302310 OR</b>	Mouse Adiponectin ELISA kit					ELISA	<a href="#">Click here</a>
<b>55R-1715</b>	Mouse Resistin ELISA kit					ELISA	<a href="#">Click here</a>
<b>20R-MR024</b>	MTNR1B antibody	Rabbit				IHC-P	<a href="#">Click here</a>
<b>20R-MR023</b>	MTNR1B antibody	Rabbit				IHC-P	<a href="#">Click here</a>
<b>55R-27160</b>	Murine Leptin ELISA kit					ELISA	<a href="#">Click here</a>
<b>10R-1906</b>	Myostatin antibody	Mouse	6H12			ELISA, WB	<a href="#">Click here</a>
<b>30R-2663</b>	Myostatin Proform protein			Human	> 98% pure		<a href="#">Click here</a>
<b>30R-2662</b>	Myostatin protein			Human	> 98% pure		<a href="#">Click here</a>
<b>30R-AM035</b>	Myostatin protein			Human	>98% pure by SDS PAGE and HPLC		<a href="#">Click here</a>
<b>30R-AM035</b>	Myostatin protein			Human	>98% pure by SDS PAGE and HPLC		<a href="#">Click here</a>
<b>80R-2450</b>	Myostatin protein (His tag)			Human	>97% by SDS-PAGE gel		<a href="#">Click here</a>
<b>80R-2449</b>	Myostatin protein (His tag)			Human	>97% by SDS-PAGE gel		<a href="#">Click here</a>
<b>10R-7385</b>	PAI1 antibody	Mouse	3G8			ELISA	<a href="#">Click here</a>
<b>20R-1399</b>	PAI1 antibody	Sheep					<a href="#">Click here</a>
<b>70R-PR018</b>	PAI1 antibody	Rabbit			Affinity Purified	ELISA, Inhibition, WB	<a href="#">Click here</a>
<b>60R-1079</b>	PAI1 antibody (HRP)	Sheep					<a href="#">Click here</a>
<b>30R-AP046</b>	PAI1 protein			Human	>98% pure by SDS PAGE and HPLC		<a href="#">Click here</a>
<b>55R-ORG531</b>	Parietal Cell ELISA kit					ELISA	<a href="#">Click here</a>

## DIABETES

Catalog No.	Product Name	Host	Clone	Species	Grade & Purity	Applications	URL
<b>10R-1993</b>	PARL antibody	Mouse	8C4B2; 1H12E10			ELISA, WB	<a href="#">Click here</a>
<b>70R-6398</b>	PARL antibody	Rabbit				WB, IHC	<a href="#">Click here</a>
<b>33R-8594</b>	PARL Blocking Peptide					WB, IHC	<a href="#">Click here</a>
<b>10R-2170</b>	PARP antibody	Mouse	7A10			ELISA, FC, WB	<a href="#">Click here</a>
<b>70R-1092</b>	PARP1 antibody	Rabbit				WB	<a href="#">Click here</a>
<b>33R-4164</b>	PARP1 Blocking Peptide					WB, IHC	<a href="#">Click here</a>
<b>70R-2103</b>	PARP11 antibody	Rabbit				WB	<a href="#">Click here</a>
<b>33R-4020</b>	PARP11 Blocking Peptide					WB, IHC	<a href="#">Click here</a>
<b>70R-9811</b>	PCSK2 antibody	Rabbit				WB	<a href="#">Click here</a>
<b>33R-4799</b>	PCSK2 Blocking Peptide					WB, IHC	<a href="#">Click here</a>
<b>10R-6707</b>	PD1 antibody	Hamster	J43			IHC, WB	<a href="#">Click here</a>
<b>61R-1694</b>	PD1 antibody (biotin)	Hamster	J43			FC	<a href="#">Click here</a>



Immunohistochemical staining  
using TNF alpha antibody

(70R-13763)

## DIABETES

Catalog No.	Product Name	Host	Clone	Species	Grade & Purity	Applications	URL
<b>61R-1189</b>	PD1 antibody (FITC)	Hamster	J43			FC	<a href="#">Click here</a>
<b>61R-1444</b>	PD1 antibody (PE)	Hamster	J43			FC	<a href="#">Click here</a>
<b>20R-PR090</b>	PDE3A antibody	Rabbit				IHC-P	<a href="#">Click here</a>
<b>20R-PR084</b>	PDE3A antibody	Rabbit				IHC-P	<a href="#">Click here</a>
<b>20R-PR083</b>	PDE3A antibody	Rabbit				IHC-P	<a href="#">Click here</a>
<b>70R-6283</b>	PDE3B antibody	Rabbit				WB	<a href="#">Click here</a>
<b>33R-8765</b>	PDE3B Blocking Peptide					WB, IHC	<a href="#">Click here</a>
<b>30R-1399</b>	PEA15 protein			Human	> 90% by SDS - PAGE	SDS-PAGE	<a href="#">Click here</a>
<b>10R-1785</b>	PKLR antibody	Mouse	AT1E3			ELISA, WB	<a href="#">Click here</a>
<b>80R-1476</b>	PKLR protein (His tag)			Human	> 90% by SDS - PAGE	SDS-PAGE	<a href="#">Click here</a>
<b>10R-1979</b>	PPARG antibody	Mouse	3A4A9, 1E6A1			ELISA, WB	<a href="#">Click here</a>
<b>80R-1399</b>	PPARG protein (His tag)			Human	> 95% by SDS - PAGE	SDS-PAGE	<a href="#">Click here</a>
<b>70R-10399</b>	PPP1R3B antibody	Rabbit				WB	<a href="#">Click here</a>
<b>33R-5454</b>	PPP1R3B Blocking Peptide					WB, IHC	<a href="#">Click here</a>
<b>55R-IB79104</b>	Proinsulin ELISA kit					ELISA	<a href="#">Click here</a>
<b>10R-8024</b>	ProInsulin antibody	Mouse	HPI-B5			ELISA, IHC, WB	<a href="#">Click here</a>
<b>10-I30G</b>	Proinsulin antibody	Mouse	M12619PI1			ELISA, Immunoassays	<a href="#">Click here</a>
<b>10R-P141a</b>	Proinsulin antibody	Mouse	3A1			ELISA, IHC	<a href="#">Click here</a>
<b>10-P14B</b>	Proinsulin antibody	Mouse	M32237			ELISA, IHC	<a href="#">Click here</a>
<b>10R-P141c</b>	Proinsulin antibody	Mouse	1G4			ELISA, IHC	<a href="#">Click here</a>
<b>10-P14A</b>	Proinsulin antibody	Mouse	M32238			ELISA, IHC	<a href="#">Click here</a>
<b>10R-P141D</b>	Proinsulin antibody	Mouse	1D6			ELISA	<a href="#">Click here</a>
<b>10R-P141b</b>	Proinsulin antibody	Mouse	1D3			ELISA	<a href="#">Click here</a>
<b>70R-5978</b>	RAGE antibody	Rabbit				WB, IHC	<a href="#">Click here</a>
<b>70R-5975</b>	RAGE antibody	Rabbit				WB	<a href="#">Click here</a>
<b>70R-1663</b>	RAGE antibody	Rabbit				WB, IHC	<a href="#">Click here</a>
<b>33R-7977</b>	RAGE Blocking Peptide					WB, IHC	<a href="#">Click here</a>
<b>33R-7361</b>	RAGE Blocking Peptide					WB, IHC	<a href="#">Click here</a>
<b>33R-2976</b>	RAGE Blocking Peptide					WB, IHC	<a href="#">Click here</a>
<b>41R-1115</b>	Rat anti Mouse IgG3	Rat	KT94			ELISA	<a href="#">Click here</a>
<b>55R-27295</b>	Rat Leptin ELISA kit					ELISA	<a href="#">Click here</a>
<b>70R-14012</b>	Resistin antibody	Rabbit				WB, IHC-P	<a href="#">Click here</a>

## DIABETES

Catalog No.	Product Name	Host	Clone	Species	Grade & Purity	Applications	URL
<a href="#">70R-12463</a>	Resistin antibody	Rabbit				WB	<a href="#">Click here</a>
<a href="#">70R-12461</a>	Resistin antibody	Rabbit				ICC, WB	<a href="#">Click here</a>
<a href="#">70R-RG003</a>	Resistin antibody	Goat			Affinity Purified	ELISA, Inhibition, WB	<a href="#">Click here</a>
<a href="#">70R-RG005</a>	Resistin antibody	Goat			Affinity Purified	ELISA, Inhibition, WB	<a href="#">Click here</a>
<a href="#">70R-RG001</a>	Resistin antibody	Goat			Affinity Purified	ELISA, Inhibition, WB	<a href="#">Click here</a>
<a href="#">10R-R122A</a>	Resistin antibody	Mouse	M912287			ELISA, Inhibition, WB	<a href="#">Click here</a>
<a href="#">70R-RR018</a>	Resistin antibody	Rabbit				WB	<a href="#">Click here</a>
<a href="#">60R-RG001bt</a>	Resistin antibody (biotin)	Goat				ELISA, WB	<a href="#">Click here</a>
<a href="#">60R-RG002bt</a>	Resistin antibody (biotin)	Goat				ELISA, WB	<a href="#">Click here</a>
<a href="#">30R-AR020</a>	Resistin protein			Human	>98% pure by SDS PAGE and HPLC		<a href="#">Click here</a>
<a href="#">30R-AR019</a>	Resistin protein			Human	>98% pure by SDS PAGE and HPLC		<a href="#">Click here</a>
<a href="#">30R-AR032</a>	Resistin protein			Human	>97% pure by SDS PAGE and HPLC		<a href="#">Click here</a>
<a href="#">10R-3068</a>	S100 antibody	Mouse	2A10		Ascites	IHC	<a href="#">Click here</a>
<a href="#">10R-3067</a>	S100 antibody	Mouse	2A10		Purified supernatant	IHC, WB	<a href="#">Click here</a>
<a href="#">70R-12788</a>	SOX13 antibody	Rabbit				IF, ICC, WB	<a href="#">Click here</a>
<a href="#">70R-13763</a>	TNF alpha antibody	Rabbit				WB, IHC-P	<a href="#">Click here</a>
<a href="#">70R-13663</a>	TNF alpha antibody	Rabbit				WB, IHC-P, ELISA, IP, Neutralization	<a href="#">Click here</a>
<a href="#">10R-3099</a>	TNF alpha antibody	Mouse	3 D12			WB	<a href="#">Click here</a>
<a href="#">10R-3098</a>	TNF alpha antibody	Mouse	5 F10			WB	<a href="#">Click here</a>



## DIABETES

Catalog No.	Product Name	Host	Clone	Species	Grade & Purity	Applications	URL
<b>70R-TR007X</b>	TNF alpha antibody	Rabbit			Affinity Purified	ELISA, Inhibition, WB	<a href="#">Click here</a>
<b>70R-TG009</b>	TNF alpha antibody	Goat			Affinity Purified	ELISA, Inhibition, WB	<a href="#">Click here</a>
<b>70R-TR008</b>	TNF alpha antibody	Rabbit			Affinity Purified	ELISA, Inhibition, WB	<a href="#">Click here</a>
<b>70R-TG001</b>	TNF alpha antibody	Goat			Affinity Purified	ELISA, Inhibition, WB	<a href="#">Click here</a>
<b>20R-TG002</b>	TNF alpha antibody	Goat				ELISA, Inhibition, WB	<a href="#">Click here</a>
<b>70R-TR020</b>	TNF alpha antibody	Rabbit			Affinity Purified	ELISA, Inhibition, WB	<a href="#">Click here</a>
<b>10R-T114a</b>	TNF alpha antibody	Mouse	M26			ELISA, Inhibition, WB	<a href="#">Click here</a>
<b>30R-AT013</b>	TNF alpha protein			Human	>98% pure by SDS PAGE and HPLC		<a href="#">Click here</a>
<b>30R-AT012</b>	TNF alpha protein			Human	>98% pure by SDS PAGE and HPLC		<a href="#">Click here</a>
<b>30R-AT046</b>	TNF alpha protein			Human	>98% pure by SDS PAGE and HPLC		<a href="#">Click here</a>
<b>55R-1451</b>	Uric Acid Assay Kit					Functional Assay	<a href="#">Click here</a>
<b>55R-RB319</b>	Vasopressin RIA kit					RIA	<a href="#">Click here</a>
<b>30R-2147</b>	VEGF165 protein			Human	> 90% by SDS-PAGE	SDS-PAGE	<a href="#">Click here</a>
<b>55R-1414</b>	Visfatin ELISA Kit					ELISA	<a href="#">Click here</a>