



Fitzgerald

www.fitzgerald-fii.com

Neuronal & Glial Markers



Fitzgerald Industries International is a premier provider of over 70,000 products including polyclonal and monoclonal antibodies, purified proteins, research ELISA kits, and specialty products in numerous research areas. Identification of particular nerve cell types is extremely important for researchers studying particular neuronal pathways and conditions that affect different cells. We offer over 3,000 products spanning a vast range of neuroscience-related targets, including a collection of neuronal and glial markers.

Astrocyte Markers

Astrocytes, also known collectively as astroglia have a pivotal function in the process of scarring and repair following brain and spinal cord injury as well as providing supporting nutrients to surrounding nervous tissues. They have a characteristic star shape and are the most abundant cell type in the human brain. GFAP is the best known astrocyte marker, but S100 and Survivin are also commonly used targets.

GFAP					
Catalog#	Product Name	Host	Reactivity	Clone #	Applications
10R-2253	GFAP antibody	Mouse	Human	6A6	ELISA, IF, IHC, WB
10R-2384	GFAP antibody	Mouse	Human, Bovine, Rat, Mouse	GF 12.24	IF, IHC, WB
10R-3036	GFAP antibody	Mouse	Bovine	G2584	IHC
10R-4205	GFAP antibody	Mouse	Human	2C4	IF, IHC, WB
10R-4206	GFAP antibody	Mouse	Human	4C10	IF, IHC, WB
10R-4208	GFAP antibody	Mouse	Human	4D11	IHC, WB
10R-4209	GFAP antibody	Mouse	Human	5B1	IF, WB
10R-4210	GFAP antibody	Mouse	Human	5D7	IHC, WB
10R-4212	GFAP antibody	Mouse	Human	1B3	WB
10R-4213	GFAP antibody	Mouse	Human	1 E11	IF, WB
10R-4214	GFAP antibody	Mouse	Human	2F7	IF, WB
10R-8068	GFAP antibody	Mouse	Human	6F2	IHC-F, IHC-P, WB
10R-G105a	GFAP antibody	Mouse	Human, Bovine, Rat, Mouse	GF2.24	IF, IHC-F, IHC-P
20R-2856	GFAP antibody	Chicken	Human	-	WB, IF
20R-2605	GFAP antibody	Guinea Pig	Bovine, Rat	-	IHC, WB
20C-CR8013R	GFAP antibody	Rabbit	Bovine, Human, Dog, Cat, Mouse, Rat	-	IHC-P, WB
20R-2732	GFAP antibody	Rabbit	Human, Rat	-	WB
20R-GR004	GFAP antibody	Rabbit	Bovine, Chicken, Guinea Pig, Hamster, Human, Monkey, Mouse, Rat, Sheep	-	IHC-F, IHC-P
20R-GR005	GFAP antibody	Rabbit	Bovine, Human, Rat	-	IHC, WB
70R-10675	GFAP antibody	Rabbit	Human, Bovine, Porcine, Ovine, Caprinae, Guinea Pig, Rat, Mouse	-	ICC, IHC
70R-17460	GFAP antibody	Rabbit	Human, Mouse, Rat	-	ELISA, IHC, WB
70R-35624	GFAP antibody	Rabbit	Human, Mouse	-	ELISA, IHC, IF, WB
70R-GR031	GFAP antibody	Rabbit	Human, Mouse, Rat	-	FC, IHC, WB
70R-34976	GFAP antibody (Ser38)	Rabbit	Human: phos Ser38, Mouse: phos Ser35	-	WB, IHC, IF, ELISA

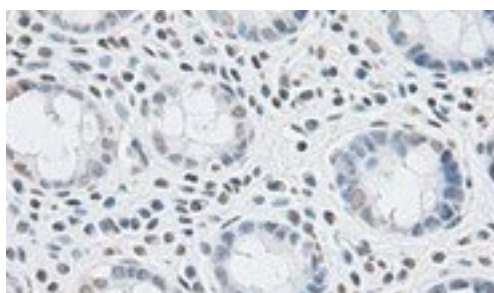


Fig 1:
Immunohistochemical staining using GFAP antibody (10R-4210)

Astrocyte Markers continued

Survivin

Catalog#	Product Name	Host	Reactivity	Clone #	Applications
10R-2082	Survivin antibody	Mouse	Human	2H5H2	ELISA, WB
70R-11659	Survivin antibody	Rabbit	Human	-	IF, WB
70R-11660	Survivin antibody	Rabbit	Mouse	-	WB
70R-11668	Survivin antibody	Rabbit	Human	-	WB
70R-21713	Survivin antibody	Rabbit	Human, Mouse, Rat	-	ELISA, IHC, WB
70R-36165	Survivin antibody	Rabbit	Mouse	-	ELISA, IHC, IF, WB
70R-36666	Survivin antibody	Rabbit	Human, Mouse, Rat	-	IHC, ELISA
70R-36507	Survivin antibody (Thr117)	Rabbit	Human: phos Thr117, Mouse: phos Thr117	-	IHC, IF, ELISA
70R-36960	Survivin antibody (Thr34)	Rabbit	Human: phos Thr34, Mouse: phos Thr34	-	WB, ELISA

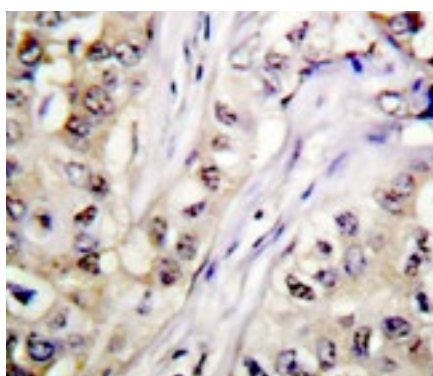


Fig 2:
Immunohistochemistry analysis of paraffin-embedded human breast carcinoma tissue using Survivin antibody (70R-36165)

S100

Catalog#	Product Name	Host	Reactivity	Clone #	Applications
10-1212	S100 antibody	Recombinant	Human	M12189	ELISA, WB
10-1714	S100 antibody	Recombinant	Human	M72612	ELISA, Lateral Flow
10R-3067	S100 antibody	Mouse	Bovine, Human	2A10	IHC, WB
10R-6774	S100 antibody	Mouse	Human, Monkey, Bovine, Rat, Mouse	S100 217	IHC, ICC
10R-S100a	S100 antibody	Mouse	Human	6G1	ELISA, WB
10R-S100b	S100 antibody	Mouse	Human	8B10	ELISA, WB
10R-S101b	S100 antibody	Mouse	Bovine, Human, Mouse, Rat	4C4.9	IHC-F, IHC-P
10-S17A	S100 antibody	Mouse	Human	M9940621	ELISA, WB
10-S17B	S100 antibody	Mouse	Human	M9940622	ELISA, WB
10-S17D	S100 antibody	Mouse	Human	M9940625	ELISA, WB
61R-1896	S100 antibody (FITC)	Mouse	Human, Monkey, Bovine, Rat, Mouse	S100 217	FC, IF
20C-CR8024G	S100 antibody	Goat	Bovine	-	ELISA
20R-2582	S100 antibody	Rabbit	Bovine	-	IHC
70R-10673	S100 antibody	Rabbit	Human, Bovine	-	IHC, ICC
70R-12224	S100 antibody	Rabbit	Human, Mouse, Rat	-	WB

Neuronal Markers

Neurons or nerve cells are the basic building blocks of the nervous system and they are responsible for transmission of information throughout the body and particularly in the brain through chemical and electrical means. Sensory neurons carry information from the sensory receptor cells throughout the body to the brain while motor neurons transmit information from the brain to the muscles of the body. Interneurons are responsible for communicating information between different neurons in the body. The most popular neuronal markers target NSE, neurofilaments and PGP.9.

Neurofilaments					
Catalog#	Product Name	Host	Reactivity	Clone #	Applications
70R-10631	68 kDa Neurofilament antibody	Chicken	Human	-	ICC, IHC, WB
10R-8097	70 kDa Neurofilament antibody	Mouse	Human	2F11	IHC-F, IHC-P, WB
10R-2279	70/200 kDa Neurofilament antibody	Mouse	Human, Pig, Bovine, Rat, Chicken	2F11	ELISA, IHC, WB
10R-2281	160 kDa Neurofilament antibody	Mouse	Bovine, Rat, Guinea Pig, Hamster	NF403	IHC, WB
10R-8098	160 kDa Neurofilament antibody	Mouse	Human, Monkey, Xenopus	RNF403	IHC-F, IHC-P, WB
10R-8099	160 kDa Neurofilament antibody	Mouse	Guinea Pig, Hamster, Human, Monkey, Rabbit, Xenopus	RNF406	IHC-F, IHC-P, WB
70R-10632	160 kDa Neurofilament antibody	Chicken	Human	-	ICC, IHC, WB
10R-3050	160/210 kDa Neurofilament antibody	Mouse	Human	N2184	IHC
10R-2280	200 kDa Neurofilament antibody	Mouse	Bovine, Rat, Guinea Pig	NF402	IHC, WB
10R-8100	200 kDa Neurofilament antibody	Mouse	Bovine, Canine, Chicken, Guinea Pig, Human, Monkey, Mouse, Rabbit, Rat, Sheep, Xenopus	RNF404	IHC-F, IHC-P, WB
10R-8101	200 kDa Neurofilament antibody	Mouse	Bovine, Canine, Chicken, Guinea Pig, Hamster, Human, Monkey, Mouse, Rabbit, Rat, Sheep, Xenopus	RNF402	IHC-F, IHC-P, WB
10R-8102	200 kDa Neurofilament antibody	Mouse	Bovine, Canine, Chicken, Guinea Pig, Hamster, Human, Monkey, Mouse, Rabbit, Rat, Sheep, Xenopus, Zebrafish	RNF405	IHC-F, IHC-P, WB
10R-N119a	200 kDa Neurofilament antibody	Mouse	Avian, Chicken, Human, Mammals, Pig, Rat, Reptile	RT97	IHC
70R-10630	200 kDa Neurofilament antibody	Chicken	Human	-	ICC, IHC, WB

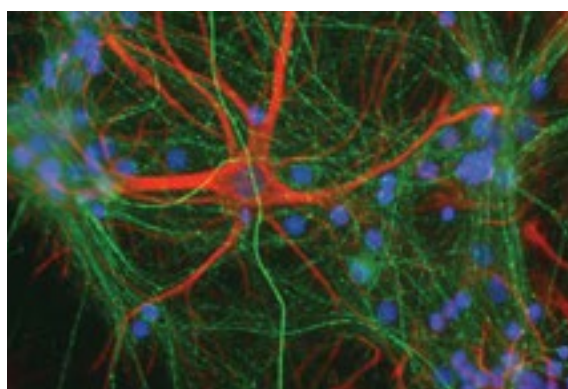


Fig 3:
Immunofluorescent staining of 160 kDa Neurofilament antibody (70R-10632)

NSE

Catalog#	Product Name	Host	Reactivity	Clone #	Applications
10-7936	NSE antibody	Mouse	Human	M18612NS1	ELISA, Immunoassays, IHC, WB
10-7937	NSE antibody	Mouse	Human	M18612NS2	ELISA, Immunoassays, IHC, WB
10-7938	NSE antibody	Mouse	Human	M18612NS3	ELISA, Immunoassays, IHC, WB
10-1208	NSE antibody	Mouse	Human	M12185	ELISA, WB
10-N121A	NSE antibody	Mouse	Human	M12619NS1	ELISA, Immunoassays, IHC, WB
10-N15B	NSE antibody	Mouse	Human	M32233	IHC-F, IHC-P, WB
10-N15C	NSE antibody	Mouse	Human	M32231	IHC-F, IHC-P, WB
10-N15D	NSE antibody	Mouse	Human	M32234	IHC-F, IHC-P, WB
10R-10225	NSE antibody	Mouse	Human	AT17D10	ELISA, WB
10R-3052	NSE antibody	Mouse	Human	33C	IHC, WB
10R-6781	NSE antibody	Mouse	Human	5E2	IHC, ICC
10R-N121a	NSE antibody	Mouse	Human	5E2	IHC-F, IHC-P, WB
10R-N121b	NSE antibody	Mouse	Human	5G10	IHC-F, IHC-P, WB
70R-10633	NSE antibody	Chicken	Human	-	ICC, IHC, WB
20R-2699	NSE antibody	Rabbit	Human, Mouse	-	WB
20R-2941	NSE antibody	Rabbit	Human, Mouse, Rat	-	WB
20R-3000	NSE antibody	Rabbit	Human, Mouse, Rat	-	WB
70R-30694	NSE antibody	Rabbit	Mouse	-	WB, IHC, IF, ELISA

PGP 9.5

Catalog#	Product Name	Host	Reactivity	Clone #	Applications
10R-P150a	PGP9.5	Mouse	Human	10A1	User optimized
10R-1055	PGP9.5	Mouse	Human, Mouse	3D9	ELISA, IHC, WB
70R-30722	PGP9.5	Rabbit	Mouse, Rat	-	WB, IHC, ELISA

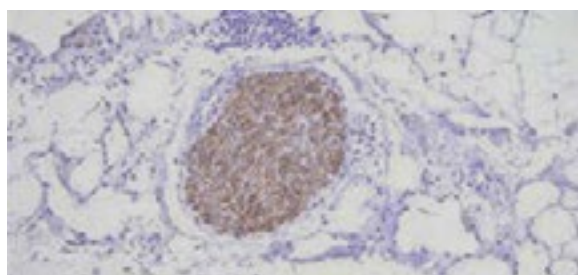


Fig 4:
Immunohistochemical staining using PGP9.5 antibody
(10R-1055)

Microglia Markers

Microglia are a type of glial cell that function as macrophages of the brain and spinal cord, acting as the primary immune defense in the CNS. They constitute 10-15% of the total glial cell population within the brain and are distributed in large non-overlapping regions throughout the brain and spinal cord. They 'mop up' damaged neurons, infectious agents and plaques, and for this reason they are believed to have significance in neurological disorders such as AD. Our most popular microglial targets are CD11b & GLUT5.

Catalog#	Product Name	Host	CD11b Reactivity	Clone #	Applications
10R-CD11bgMS	CD11b antibody	Rat	Mouse	3A33	FC, IP
10R-CD11bgMSLE	CD11b antibody (Azide Free)	Rat	Mouse	3A33	FC, IP
61R-CD11bgMSBT	CD11b antibody (biotin)	Rat	Mouse	3A33	FC, IP
61R-CD11bgMSFT	CD11b antibody (FITC)	Rat	Mouse	3A33	FC
61R-CD11bgMSPE	CD11b antibody (PE)	Rat	Mouse	3A33	FC
10R-8129	CD11b antibody	Mouse	Human	Bear-1	FC, IP
10R-6349	CD11b antibody	Mouse	Human	CBRM1/5	FC
61R-1052	CD11b antibody (FITC)	Mouse	Human	CBRM1/5	FC
10R-CD11bCHU	CD11b antibody	Mouse	Human	ICRF44	FC, IHC
61R-1472	CD11b antibody (biotin)	Mouse	Human	ICRF44	FC
61R-1055	CD11b antibody (FITC)	Mouse	Human	ICRF44	FC
10R-CD11baMS	CD11b antibody	Rat	Mouse	M1/70	FC, IHC-F, IHC-P, IP
61R-CD11baMSAPC	CD11b antibody (Allophycocyanin)	Rat	Mouse	M1/70	FC, IHC
61R-CD11baMSBT	CD11b antibody (biotin)	Rat	Mouse	M1/70	FC, IHC, IP
61R-CD11baMSCY5	CD11b antibody (CY5)	Rat	Mouse	M1/70	FC, IHC
61R-CD11baMSFT	CD11b antibody (FITC)	Rat	Mouse	M1/70	FC, IHC
61R-CD11baMSPE	CD11b antibody (PE)	Rat	Mouse	M1/70	FC, IHC
61R-CD11baMSSP	CD11b antibody (Spectral Red)	Rat	Mouse	M1/70	FC, IHC
10-Z11B	CD11b antibody	Mouse	Human	M504514	User optimized
61R-1875	CD11b antibody (FITC)	Rat	Human	mCD11b	User optimized
10R-CD11beRT	CD11b antibody	Mouse	Rat	OX-42	FC, IHC-F

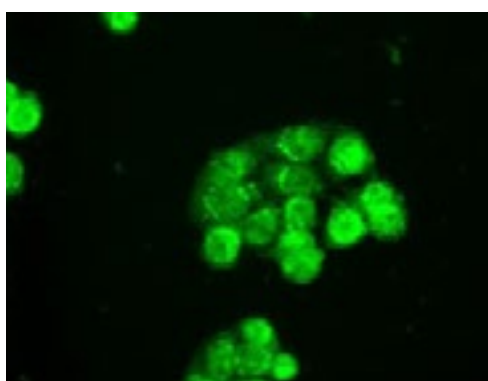


Fig 5:
Immunofluorescent staining using
GLUT5 antibody
(10R-5809)

Catalog#	Product Name	Host	GLUT5 Reactivity	Clone #	Applications
70R-14274	GLUT5 antibody	Rabbit	Human	-	WB, IHC-P
70R-7547	GLUT5 antibody	Rabbit	Human	-	WB
70R-7704	GLUT5 antibody	Rabbit	Human	-	IHC, WB
70R-GR006	GLUT5 antibody	Rabbit	Human	-	IHC-P, WB

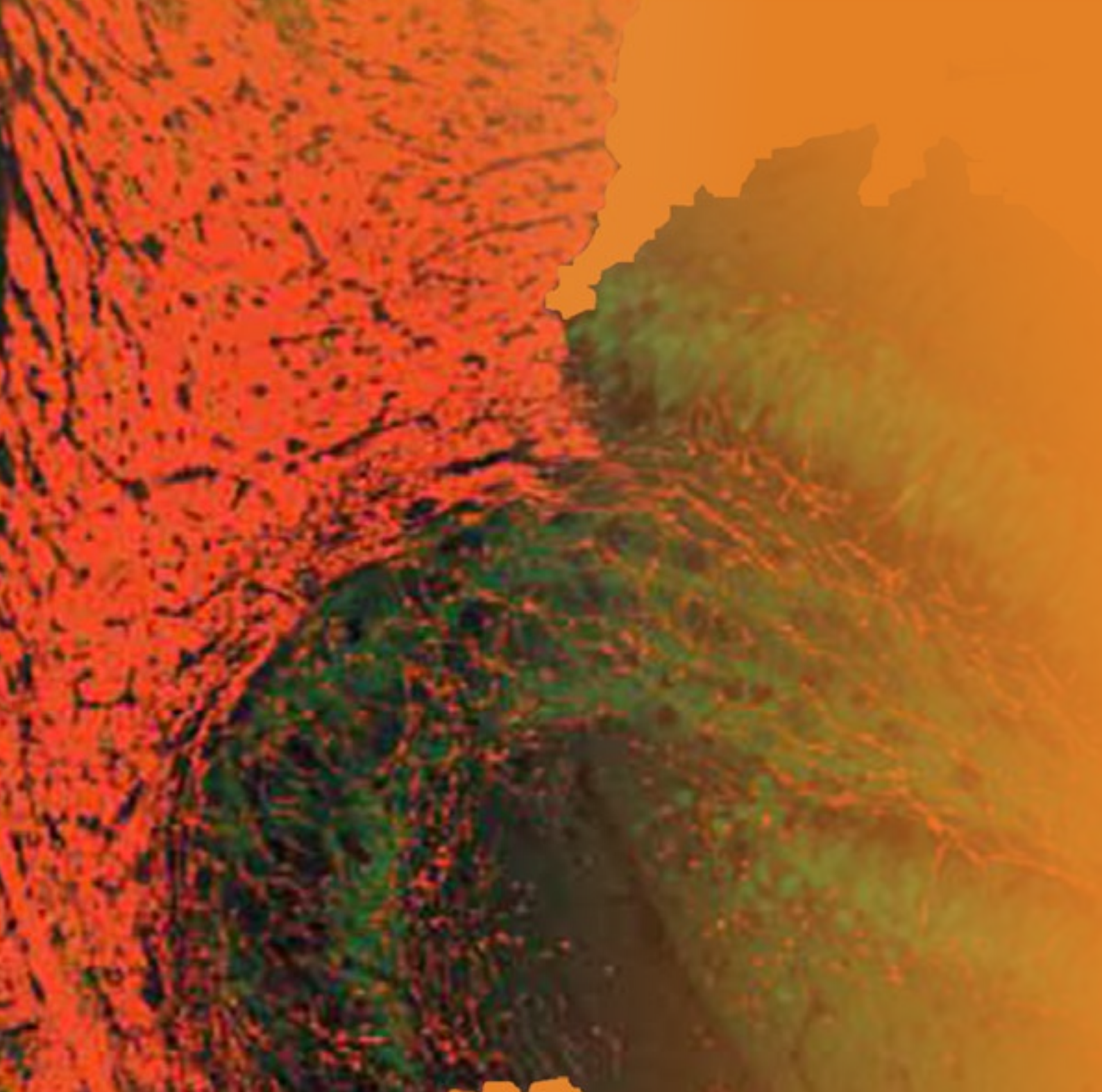
Oligodendrocytes

The principle function of oligodendrocytes is to provide support to axons, the primary component of neurons and to produce the Myelin sheath, which insulates axons. This increases the speed and effectiveness of the nerve impulse along the axon, thus making oligodendrocytes an essential requirement for proper functioning of the nervous system. Myelin basic protein (MBP) and Nestin are commonly used markers for oligodendrocytes.

Catalog#	Product Name	Host	MBP Reactivity	Clone #	Applications
10-M59A	MBP antibody	Mouse	Human	M0201109	User optimized
10R-10450	MBP antibody	Mouse	Human	M78819	ELISA, WB
10R-2151	MBP antibody	Mouse	Human	3G1A3	ELISA, WB
10R-3101	MBP antibody	Mouse	E. coli	4 C6	WB
10R-M143a	MBP antibody	Mouse	Human	BM15	ELISA, WB
20R-2750	MBP antibody	Rabbit	Human, Mouse, Rat	-	WB
20R-2860	MBP antibody	Chicken	Human	-	WB, IF
70R-10644	MBP antibody	Chicken	Human	-	ICC, IHC, WB
70R-10674	MBP antibody	Rabbit	Human	-	ICC, IHC
70R-13733	MBP antibody	Rabbit	Human	-	WB, IHC-P
70R-18432	MBP antibody	Rabbit	Human, Mouse, Rat	-	ELISA, WB
70R-2324	MBP antibody	Rabbit	Human, Rat	-	WB
70R-2325	MBP antibody	Rabbit	Human	-	WB
70R-MR055	MBP antibody	Rabbit	Human, Mouse, Rat	-	FC, IHC, WB
10R-P120a	phospho MBP antibody	Mouse	Human, Vertebrates	P12	Kinase Assay, WB

Catalog#	Product Name	Host	Myelin Reactivity	Clone #	Applications
10R-2289	Myelin antibody	Mouse	Human	2B5	IHC, WB
10R-7783	Myelin Oligodendrocyte Glycoprotein antibody	Mouse	Human, others not tested	NYRMOG	ELISA, IP, IHC, WB

Catalog#	Product Name	Host	Nestin Reactivity	Clone #	Applications
10R-6669	Nestin antibody	Mouse	Human	10C2	Functional Assay
10R-8096	Nestin antibody	Mouse	Human	10C2	IHC, IHC-F, IHC-P, WB
10R-8364	Nestin antibody	Mouse	Human	4D11	WB, IF
70R-10645	Nestin antibody	Chicken	Human	-	ICC, IHC, WB
70R-11693	Nestin antibody	Rabbit	Human, Chimpanzee	-	IHC, WB
70R-7754	Nestin antibody	Rabbit	Human, Mouse, Rat	-	IHC, WB
70R-NR017	Nestin antibody	Rabbit	Human, Mouse	-	FC, IHC, WB



Fitzgerald

Website www.fitzgerald-fii.com
E-mail antibodies@fitzgerald-fii.com
Toll Free (USA) 800.370.2222
Tel 978.371.6446
Fax 978.371.2266

scan code for more info

