



# Fitzgerald

[www.fitzgerald-fii.com](http://www.fitzgerald-fii.com)

## Tumor Markers & Antibody Pairs

---

Fitzgerald Industries International is a premier provider of over 70,000 products including polyclonal and monoclonal antibodies, purified proteins, research ELISA kits, and specialty products in numerous research areas. We offer a vast range of cancer-related targets including, tumor markers, cell death and survival pathways, growth factors, oncogenes, signaling molecules, and cell division pathways. For more than 20 years, commercial diagnostic companies and research institutions across the globe have known they can depend on Fitzgerald Industries to supply high quality products to ensure the success of their research.

## Produced for Cutting Edge Cancer Research

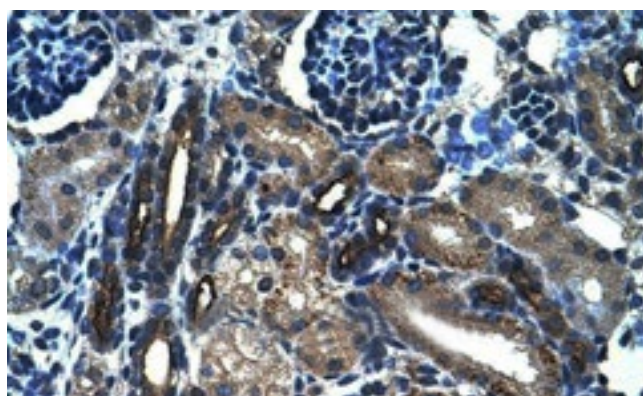


Fig. 1: MUC1 antibody, Cat. No. 70R-1744, at 4-8 µg/ml staining epithelial cell of human kidney renal tubule.

We understand that cancer research is one of the most important areas of cutting edge research, with millions of scientists worldwide dedicating their careers to finding cures and treatments to this devastating disease. Fitzgerald Industries prides itself on the wide range of products which we progressively introduce in the area of cancer and tumor studies. We aim to provide high quality tools to study existing and emerging targets to aid researchers to continue to unfold the intricate cellular models, and to the discover cancer causes and treatments.

## Vast Array of Cancer Targets

We have an extensive list of antibodies and proteins relating to cancers of the breast, prostate, lung, ovary, testis, stomach, bladder, kidney, and brain, for example; HE4, BRCA, MUC1, CA 15-3, CA 19-9, CA 27-29, CA 125, ERBB2, CEACAM, Neu, c-myc, Survivin, p53, IGF, CEA, AFP, PSA, PAP, and hundreds more.

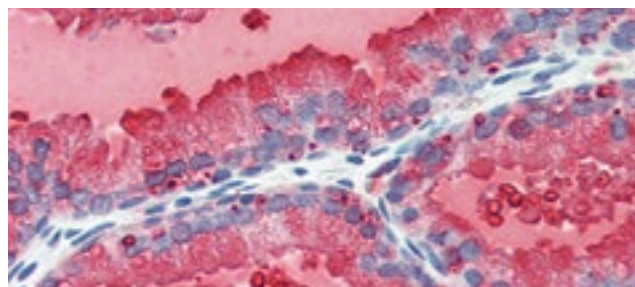


Fig. 2: PSA antibody, Cat. No. 10R-2123 staining of paraffin-embedded human prostate tissues.

## Validated Matched Pair Antibodies

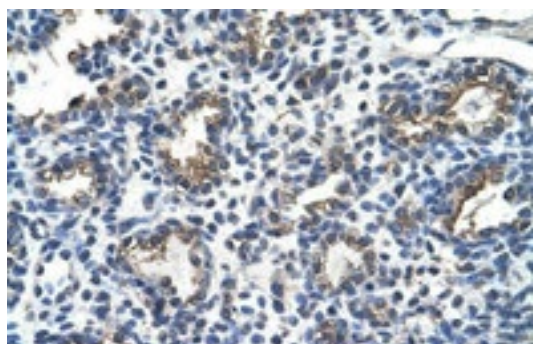
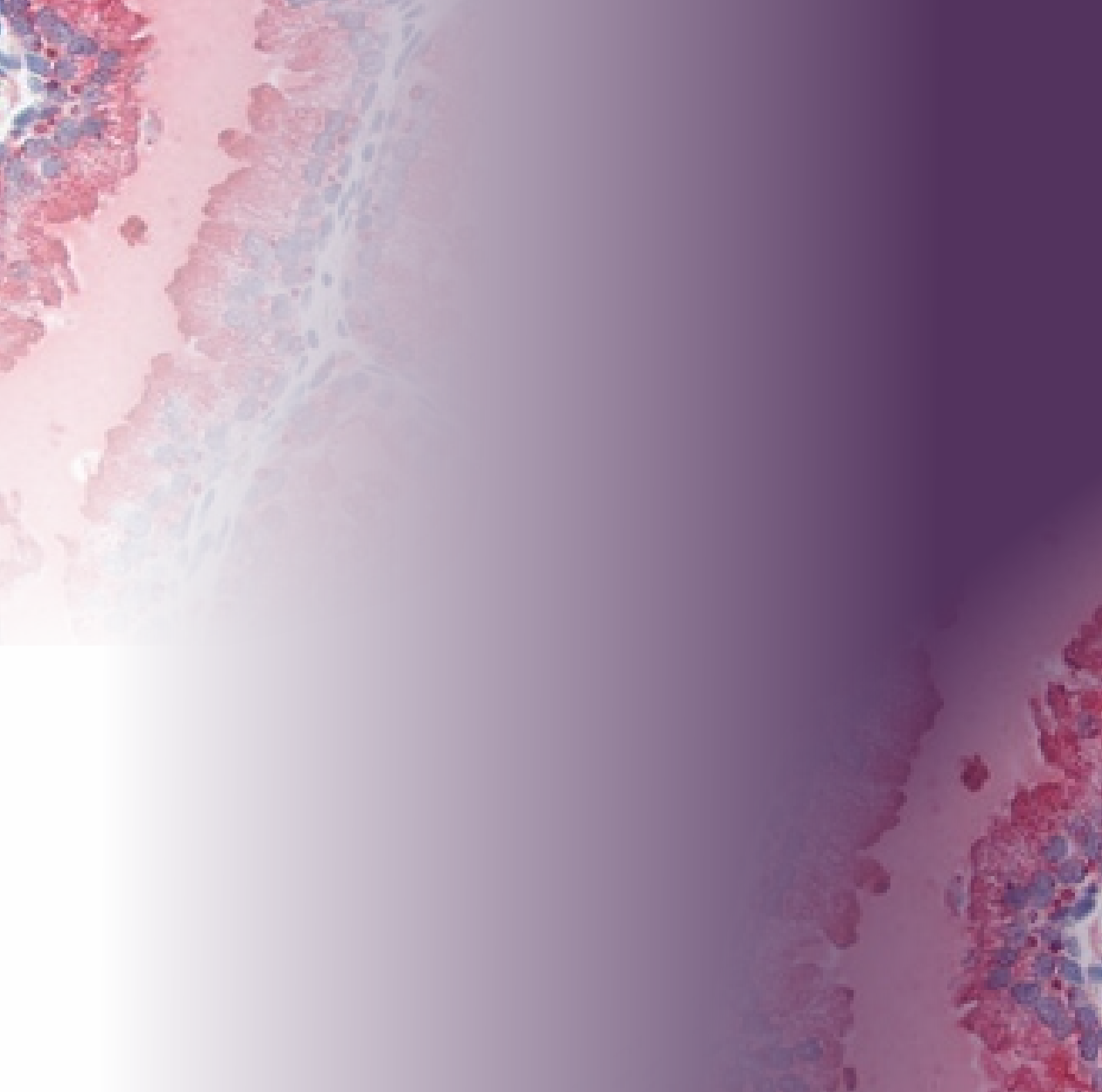


Fig. 3: CEACAM6 antibody, Cat. No. 70R-1221, at 4-8 µg/ml staining alveolar cells of the human lung.

Not only do we offer a vast array of targets, we also have validated matched pair antibodies which we can recommend for capture and detection in sandwich based immunoassays, and related proteins for use as controls. These off-the-shelf reagents will save you time, stress, and money in assay development by removing the need for optimization of your own reagents, while giving sensitive and robust results.

## Validated Matched Pair Antibodies

Antibody Pair	Capture	Clone #	Detection	Clone #	Comments, Assay Type
AFP antibody pair	10-1391	M1709AFP2	10-1390	M1709AFP1	ELISA, Lateral Flow
AFP antibody pair	10-3141	M1202096	10-3140	M1202095	ELISA, Lateral Flow
AFP antibody pair	10C-CR1007M4	2127435	10C-CR1007M5	6127435	ELISA, Lateral Flow
AFP antibody pair	10-A05B	M19301	70-XG05		ELISA
AFP antibody pair	10-A100A	M12619AF1	10-A100B	M12619AF2	ELISA, Lateral Flow
AFP Receptor antibody pair	10-7877	M18612AF1	10-7878	M18612AF2	ELISA, Lateral Flow
CA 15-3 antibody pair	10-CA15D	M61675	10-CA15B	M2012112	ELISA, Lateral Flow
CA 15-3 antibody pair	10-CA15C	M59891	10-CA15B	M2012112	ELISA, Lateral Flow
CA 15-3 antibody pair	10-CA15A	M201211	10-CA15B	M2012112	ELISA, Lateral Flow
CA 15-3 antibody pair	10-1143	M12145	10-1144	M12146	ELISA, Lateral Flow
CA 15-3 antibody pair	10-1145	M12147	10-1144	M12146	ELISA
CA 15-3 antibody pair	10-1457	M12294	10-1456	M12293	ELISA, WB
CA 15-3 antibody pair	10-C03F	M002208	10-C03E	M002204	ELISA, Lateral Flow
CA 15-3 antibody pair	10-C03E	M002204	10-C03E	M002204	Serum immunoassays
CA 19-9 antibody pair	10-1148	M12150	10-1149	M12151	ELISA
CA 19-9 antibody pair	10-CA19A	M2012114	10-CA19B	M2012113	ELISA, Lateral Flow
CA 125 antibody pair	10-C02E	M002201	10-C02F	M002203	ELISA
CA 242 antibody pair	10-1537	M62861	10-1538	M62862	ELISA, Lateral Flow
CEA antibody pair	10-1393	M1709CEA2	10-1392	M1709CEA1	ELISA, Lateral Flow
CEA antibody pair	10-C10F	M0911041	10-C10G	M0911042	ELISA, Lateral Flow
CEA antibody pair	10-C10D	M111147	10-C10E	M111146	ELISA
CEA antibody pair	10-7882	M18612CEA1	10-7883	M18612CEA2	ELISA, Lateral Flow
hCG alpha antibody pair	70-1016		70-1014		ELISA, Lateral Flow
hCG beta antibody pair	10-C25D	M94138	10-C25B	M94140	Quantitative ELISA
hCG antibody pair	10-3127	M1202082	10-3126	M1202081	Lateral Flow
hCG antibody pair	10-3126	M1202081	10-3127	M1202082	ELISA
NSE antibody pair	10-N121A	M12619NS1	10-7936	M18612NS1	ELISA, Lateral Flow
NSE antibody pair	10-7937	M18612NS2	10-7938	M18612NS3	ELISA, Lateral Flow
PAP antibody pair	10-P45A	M01010921	10-P45B	M01010922	ELISA, IRMA
PSA antibody pair	10-1395	M1709PSA2	10-1394	M1709PSA1	ELISA, Lateral Flow
PSA antibody pair	10-3143	M1202098	10-3142	M1202097	ELISA, Lateral Flow
PSA antibody pair	10-P20D	M701041	10-P20E	M701042	Total PSA in ELISA
PSA antibody pair	10-P20A	M612166	10-P20E	M701042	Total PSA in ELISA
PSA antibody pair	10-P21A	M612165	10-P20A	M612166	Free PSA in ELISA
PSA/ACT antibody pair	10-P22A	M612151	10-P20F	M71863	Complex PSA in ELISA
PSA/ACT antibody pair	10-P22A	M612151	61-P20F	M71863HRP	Complex PSA in ELISA
PSA antibody pair	10-P142A	M12619PS1	10-7948	M18612PS4	ELISA, Lateral Flow
S100 antibody pair	10-S17B	M9940622	10-S17A	M9940621	ELISA, Lateral Flow
TNF alpha antibody pair	10-T60C	M32253	10-T60D	M32255	ELISA, Lateral Flow



# Fitzgerald

Website [www.fitzgerald-fii.com](http://www.fitzgerald-fii.com)  
E-mail [antibodies@fitzgerald-fii.com](mailto:antibodies@fitzgerald-fii.com)  
Toll Free (USA) 800.370.2222  
Tel 978.371.6446  
Fax 978.371.2266

scan code for more info

